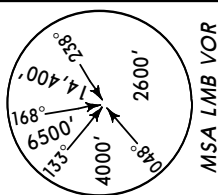


Airport Information

Details for LOMBOK INTL	
City	PRAYA
State/Province	
Country	IDN
Latitude	S 8° 45' 27.00"
Longitude	E 116° 16' 36.00"
Elevation	319
Longest Runway	9000
Magnetic Variance	E 2.0°
Fuel Type	JET A-1 fuel is available
Oxygen	Oxygen facilities are unavailable.
Repair Facility	Repair facilities are unavailable
Landing Fee	Unknown.
Jet Start Unit	A starting unit is not available at the airport.
Precision Approach	One or more charts for the airport support precision approaches.
Beacon Light	A beacon light is available.
Customs Facilities	Customs are available without restriction
Usage Type	Airport/Heliport is open to the public.
Time Zone Conversion	-8:00=UTC
Daylight Savings	Airport does not observe daylight savings time
Change Notices Available	none

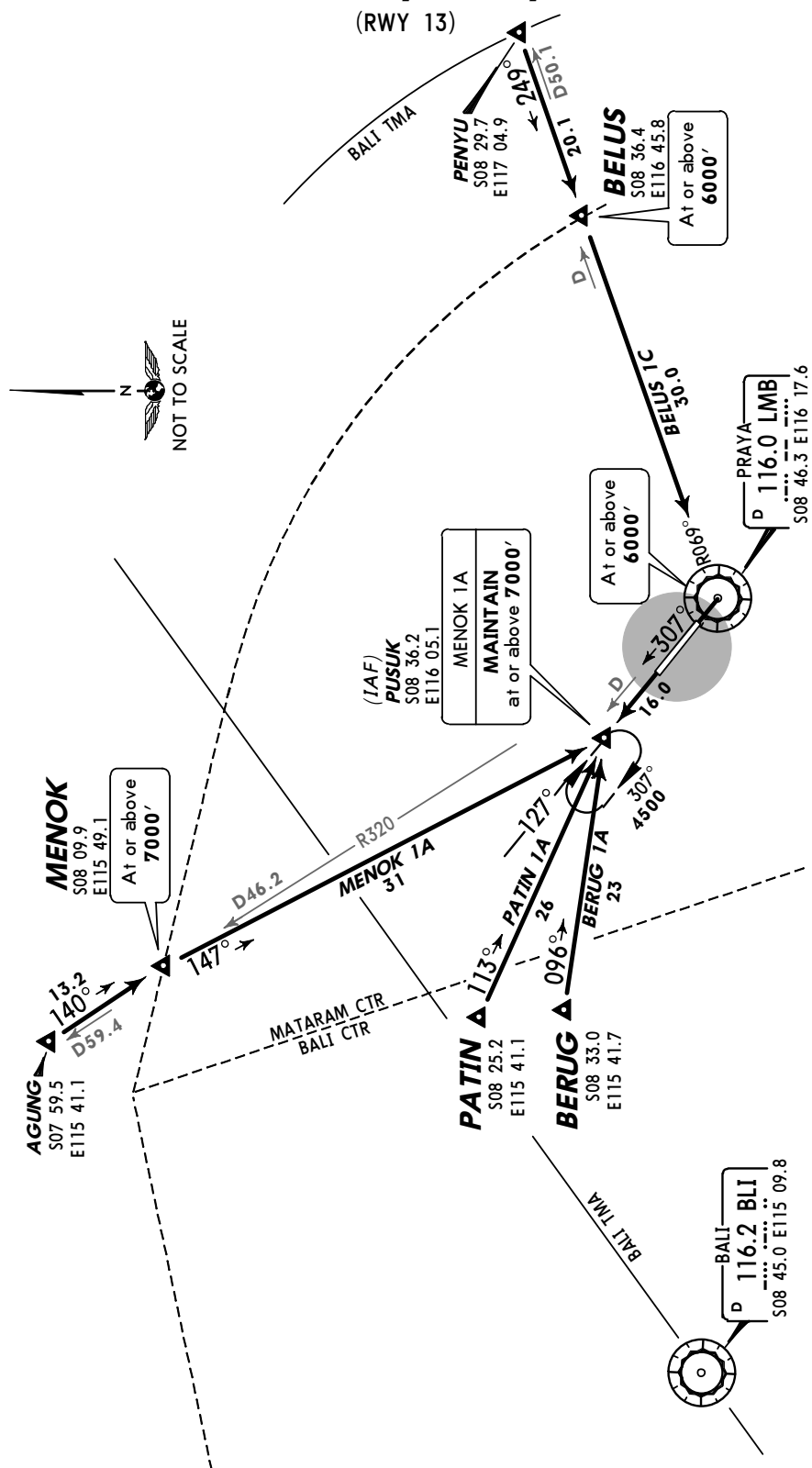
Apt Elev
319'

Alt Set: MB (IN on request) Trans level: FL130 Trans alt: 11000'

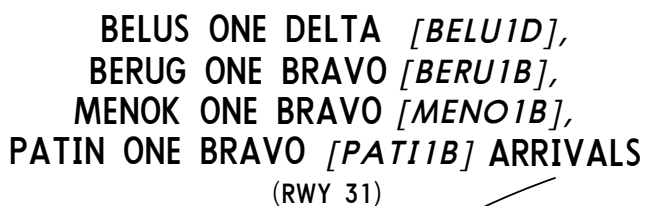
BELUS ONE CHARLIE [BELU1C],
BERUG ONE ALPHA [BERU1A],
MENOK ONE ALPHA [MENO1A],
PATIN ONE ALPHA [PATI1A] ARRIVALS

(RWY 13)

STAR	ROUTING
BELUS ONE CHARLIE	From BELUS follow LMB R-069 to LMB at or above 6000', then descend to 4500' to follow LMB R-307 to PUSUK.
BERUG ONE ALPHA	From BERUG track 096° to PUSUK, descend to 4500'.
MENOK ONE ALPHA	From MENOK track 147° and MAINTAIN at or above 7000' to PUSUK, then join holding pattern and descend to 4500'.
PATIN ONE ALPHA	From PATIN track 113° to PUSUK, descend to 4500'.



Alt Set: MB (IN on request) Trans level: FL130 Trans alt: 11000'

[illegible]

Trans level: FL130 Trans alt: 11000'



(RWY 13)

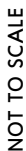
INITIAL CLIMB

Take-off, at 2000' turn LEFT heading 039° continue climb to 5000' intercept LMB R-069 to BELUS.

Take-off, turn LEFT to overhead LMB, at or above 5500' to join LMB R-248 to CODOT.

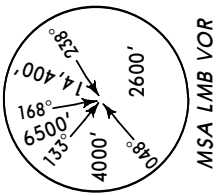
Take-off, MAINTAIN runway heading until 3000', then turn LEFT to overhead LMB, then join LMB R-335 at or above 8000'.

Take-off, turn LEFT to overhead LMB, at or above 5500' to join LMB R-249 to TIKUS.



Apt Elev
319'

Trans level: FL130 Trans alt: 11000'



MSA LMB VOR

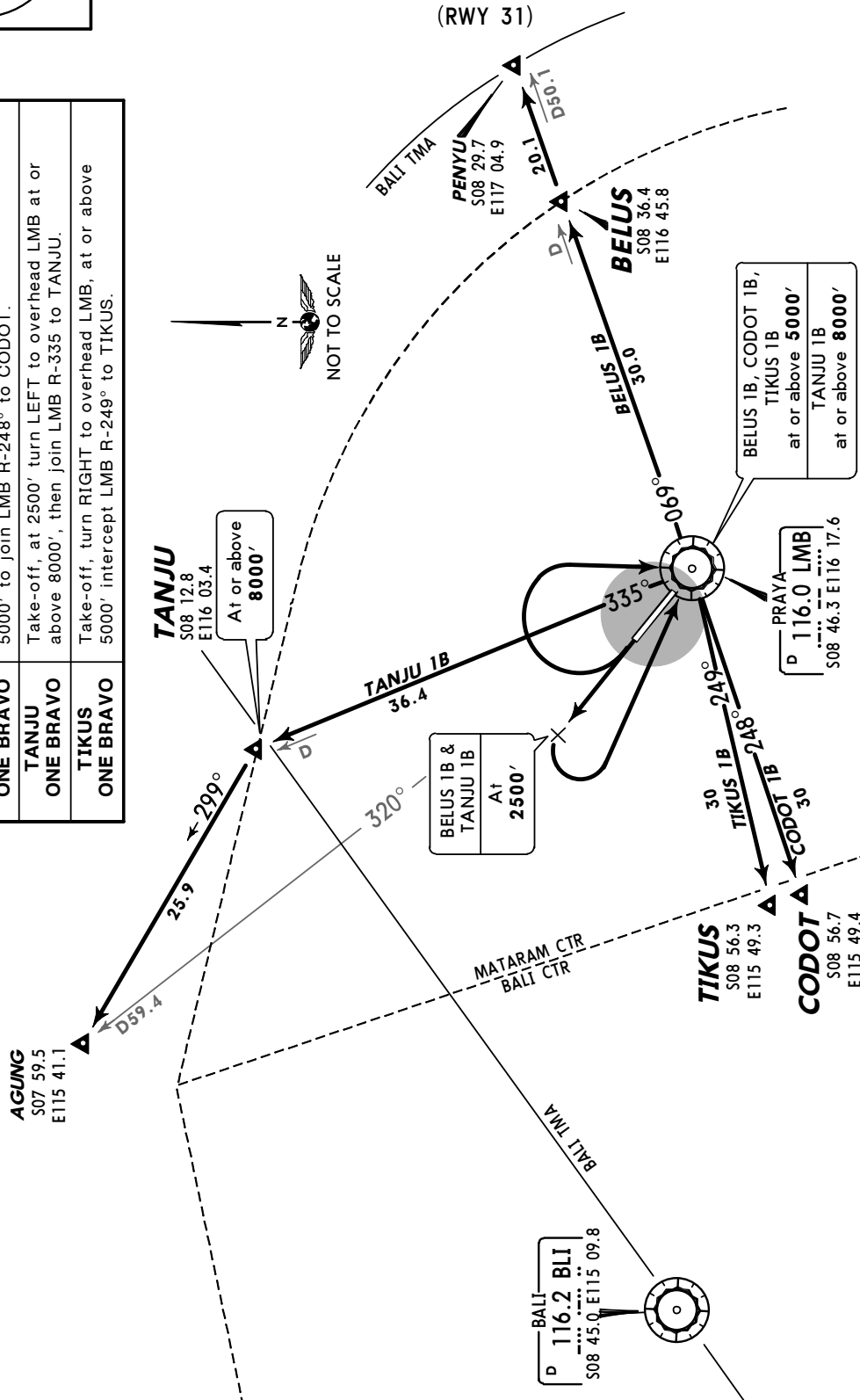
BELUS ONE BRAVO [BELU1B],
CODOT ONE BRAVO [CODO1B],
TANJU ONE BRAVO [TANJ1B],
TIKUS ONE BRAVO [TIKU1B] DEPARTURES

(RWY 31)

INITIAL CLIMB

SID

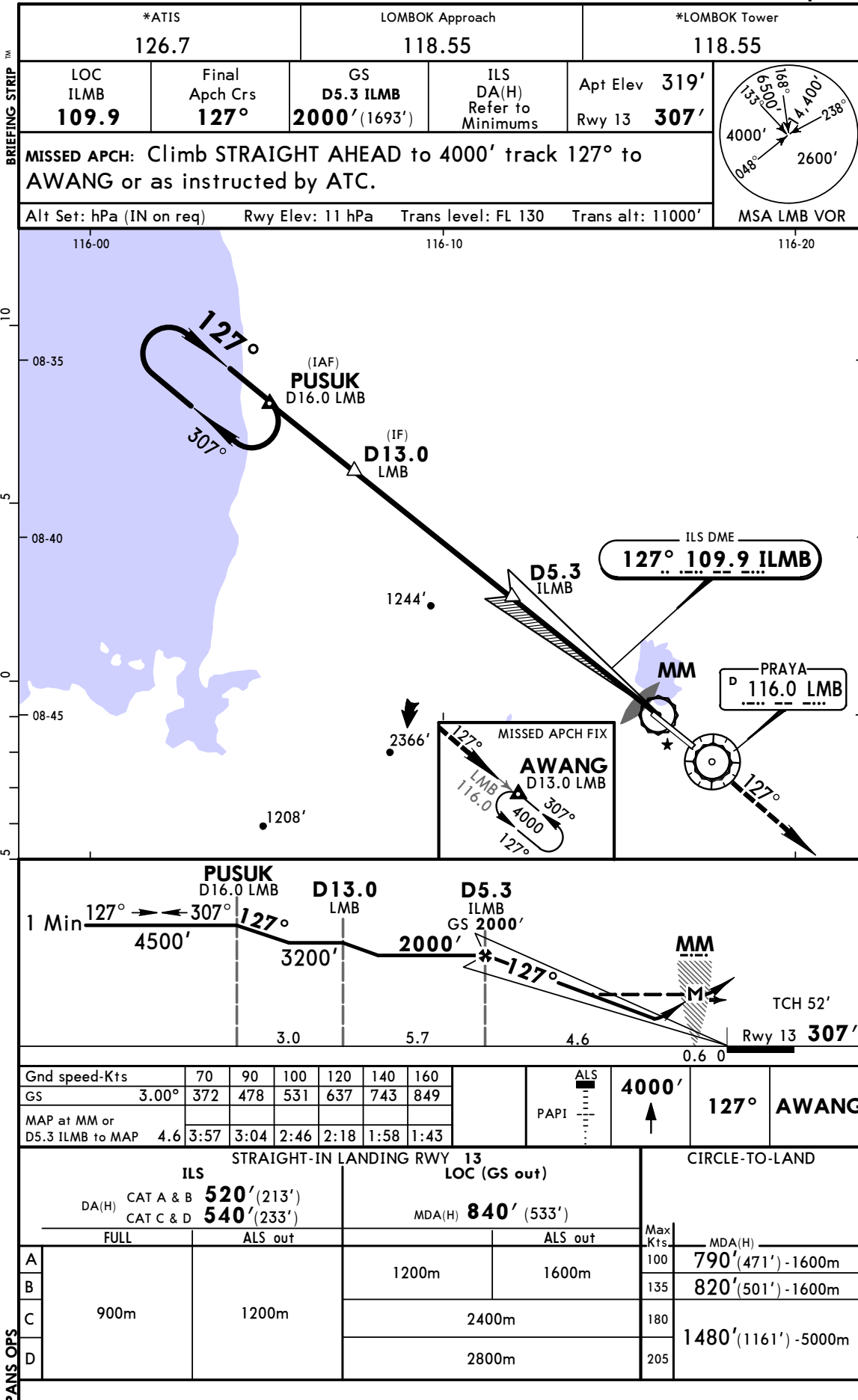
BELUS ONE BRAVO	Take-off, at 2500' turn LEFT to overhead LMB at or above 5000', then join LMB R-069 to BELUS.
CODOT ONE BRAVO	Take-off, turn RIGHT to overhead LMB, at or above 5000' to join LMB R-248° to CODOT.
TANJU ONE BRAVO	Take-off, at 2500' turn LEFT to overhead LMB at or above 8000', then join LMB R-335° to TANJU.
TIKUS ONE BRAVO	Take-off, turn RIGHT to overhead LMB, at or above 5000' intercept LMB R-249° to TIKUS.



WADL/LOP
LOMBOK INTL

JEPPESEN
24 APR 15 (11-1)

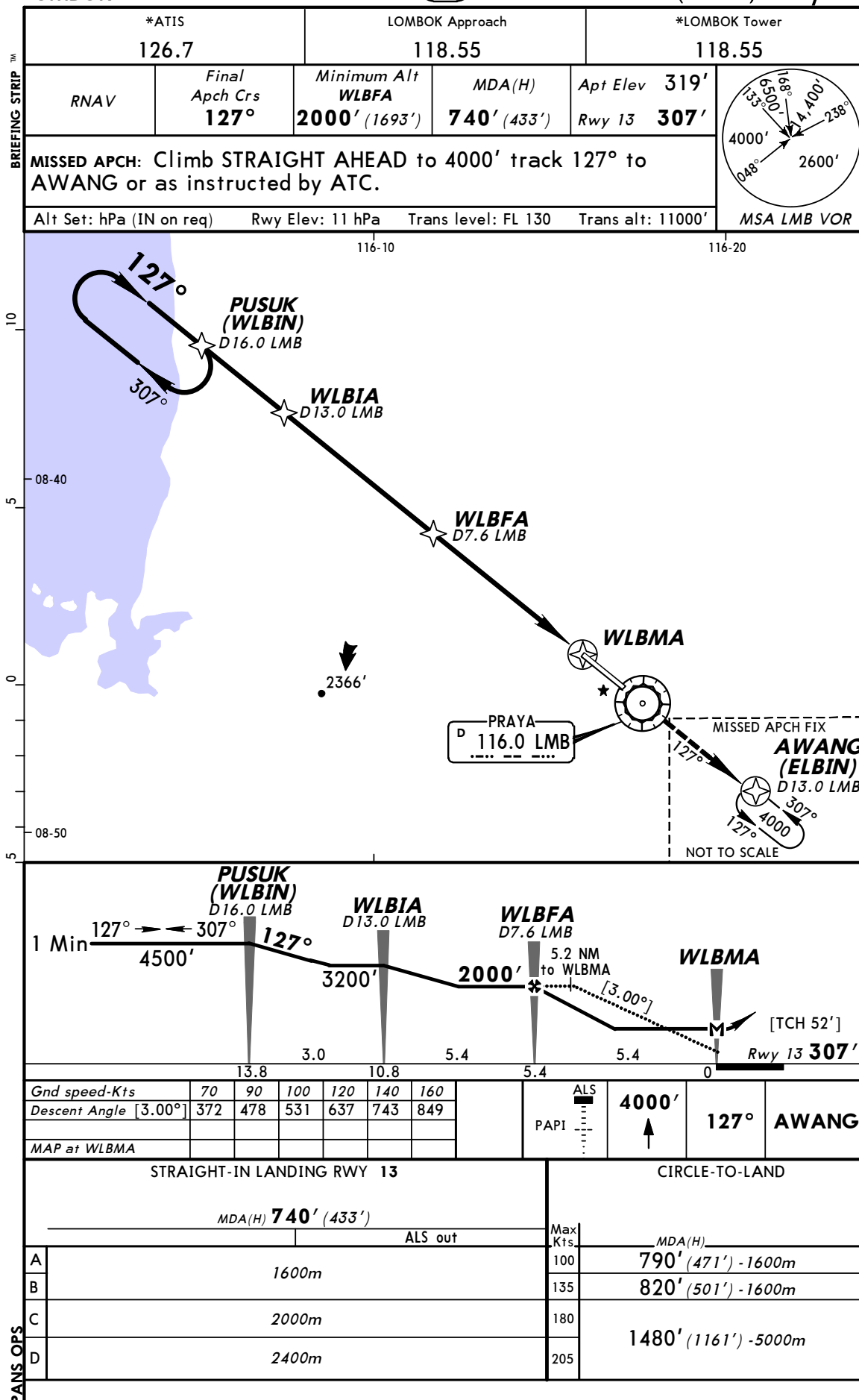
PRAYA, INDONESIA
ILS Rwy 13



WADL/LOP
LOMBOK INTL

JEPPESSEN
23 NOV 12 (12-1)

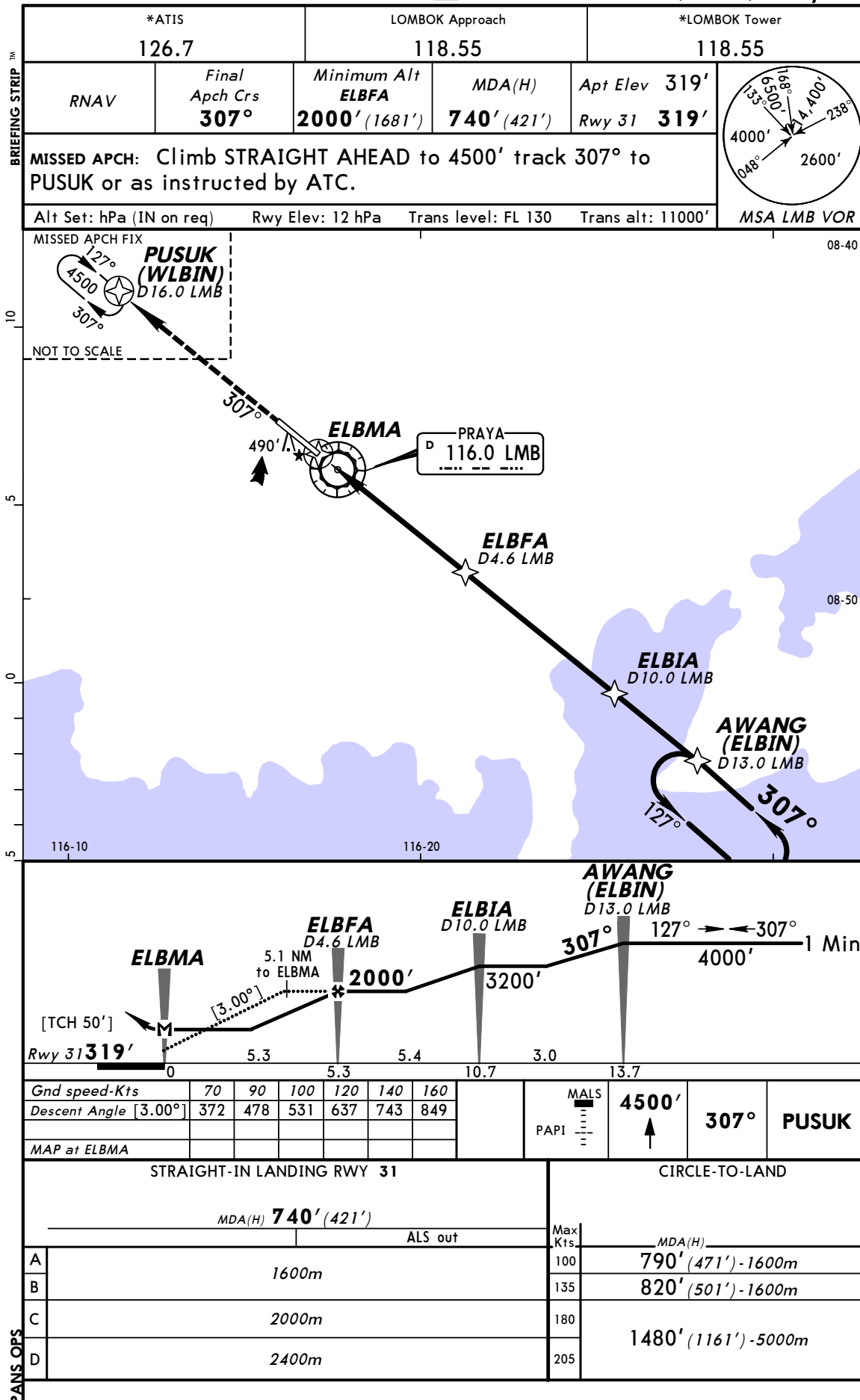
PRAYA, INDONESIA
RNAV (GNSS) Rwy 13



WADL/LOP
LOMBOK INTL

JEPPESSEN
23 NOV 12 (12-2)

PRAYA, INDONESIA
RNAV (GNSS) Rwy 31



CHANGES: Communications.


© JEPPESSEN, 2011, 2012. ALL RIGHTS RESERVED.

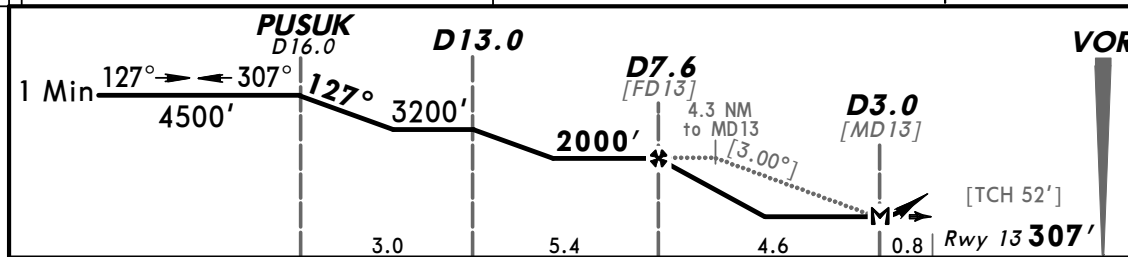
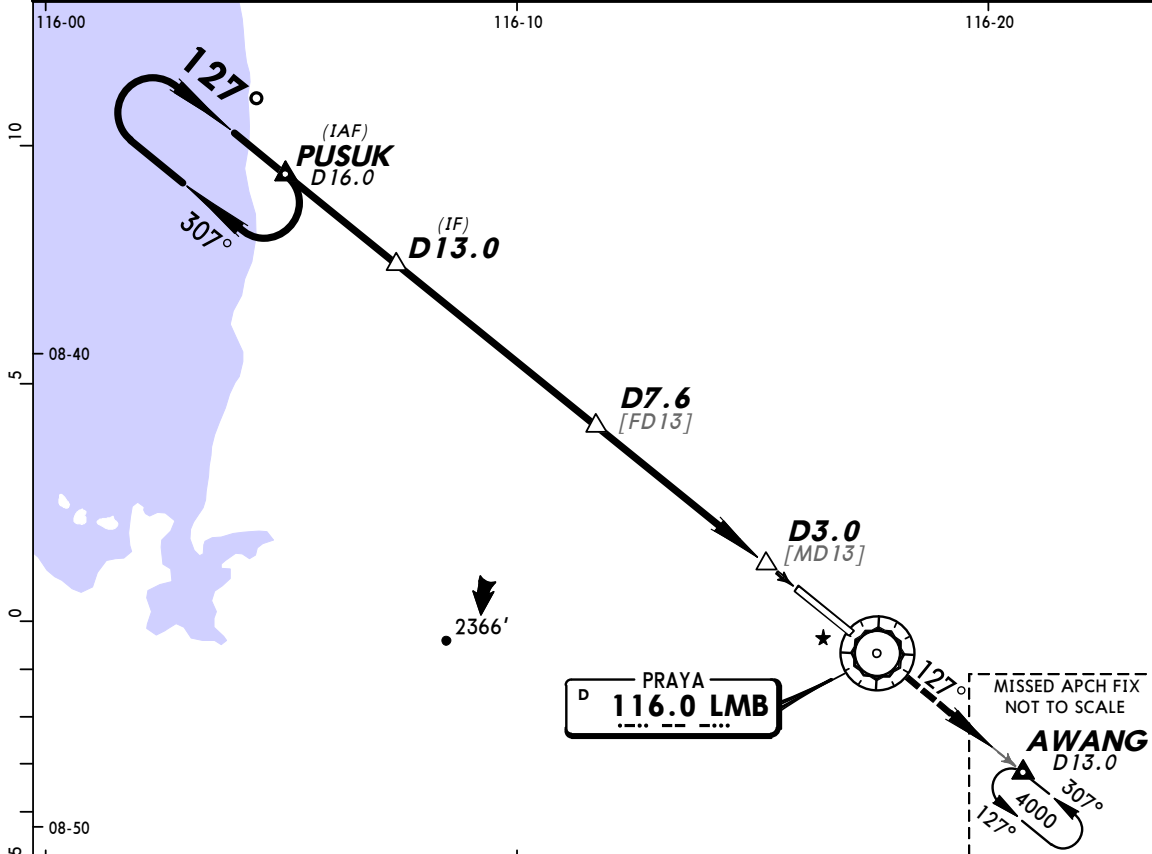
WADL/LOP
LOMBOK INTL

JEPPESEN
23 NOV 12 (13-1)

PRAYA, INDONESIA
VOR DME Rwy 13

BRIEFING STRIP™

*ATIS 126.7		LOMBOK Approach 118.55		*LOMBOK Tower 118.55	
VOR LMB 116.0	Final Apch Crs 127°	Minimum Alt D7.6 2000' (1693')	MDA(H) 740' (433')	Apt Elev 319' Rwy 13 307'	
MISSED APCH: Climb STRAIGHT AHEAD to 4000' track 127° to AWANG or as instructed by ATC.					
Alt Set: hPa (IN on req)		Rwy Elev: 11 hPa	Trans level: FL 130	Trans alt: 11000'	
					MSA LMB VOR



Gnd speed-Kts	70	90	100	120	140	160	<div><div>ALS</div><div>PAPI</div></div>	4000'	127°	AWANG
Descent Angle [3.00°]	372	478	531	637	743	849				
MAP at D3.0										
FAF to THR	5.4	4:38	3:36	3:14	2:42	2:19	2:02			

STRAIGHT-IN LANDING RWY 13					CIRCLE-TO-LAND				
MDA(H) 740' (433')									
ALS out					Max Kts	MDA(H)			
A					100	790' (471')-1600m			
B	1600m				135	820' (501')-1600m			
C	2000m				180				
D	2400m				205	1480' (1161')-5000m			

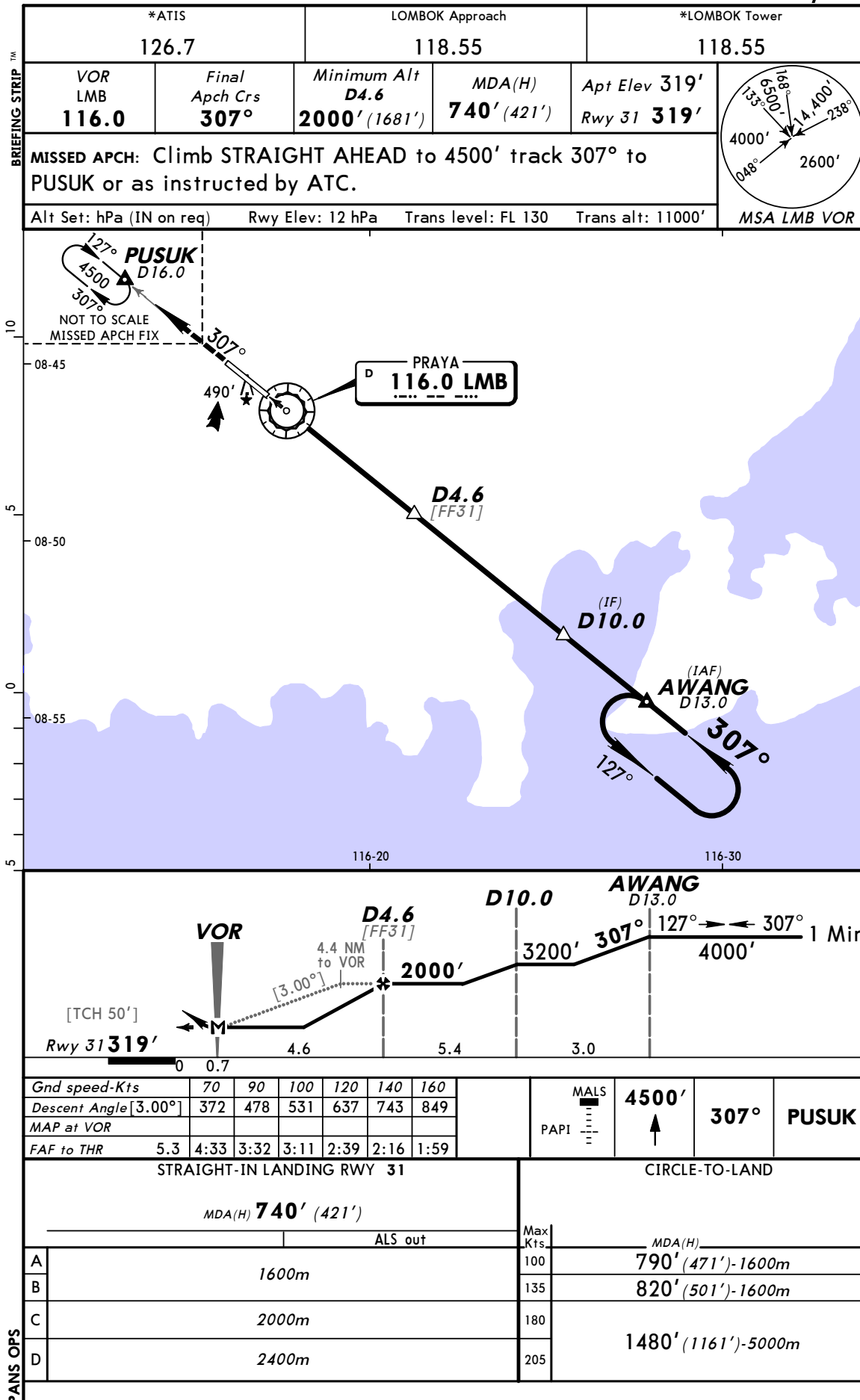
CHANGES: Communications.

© JEPPESEN, 2011, 2012. ALL RIGHTS RESERVED.

WADL/LOP
LOMBOK INTL

JEPPESSEN
23 NOV 12 (13-2)

PRAYA, INDONESIA
VOR DME Rwy 31



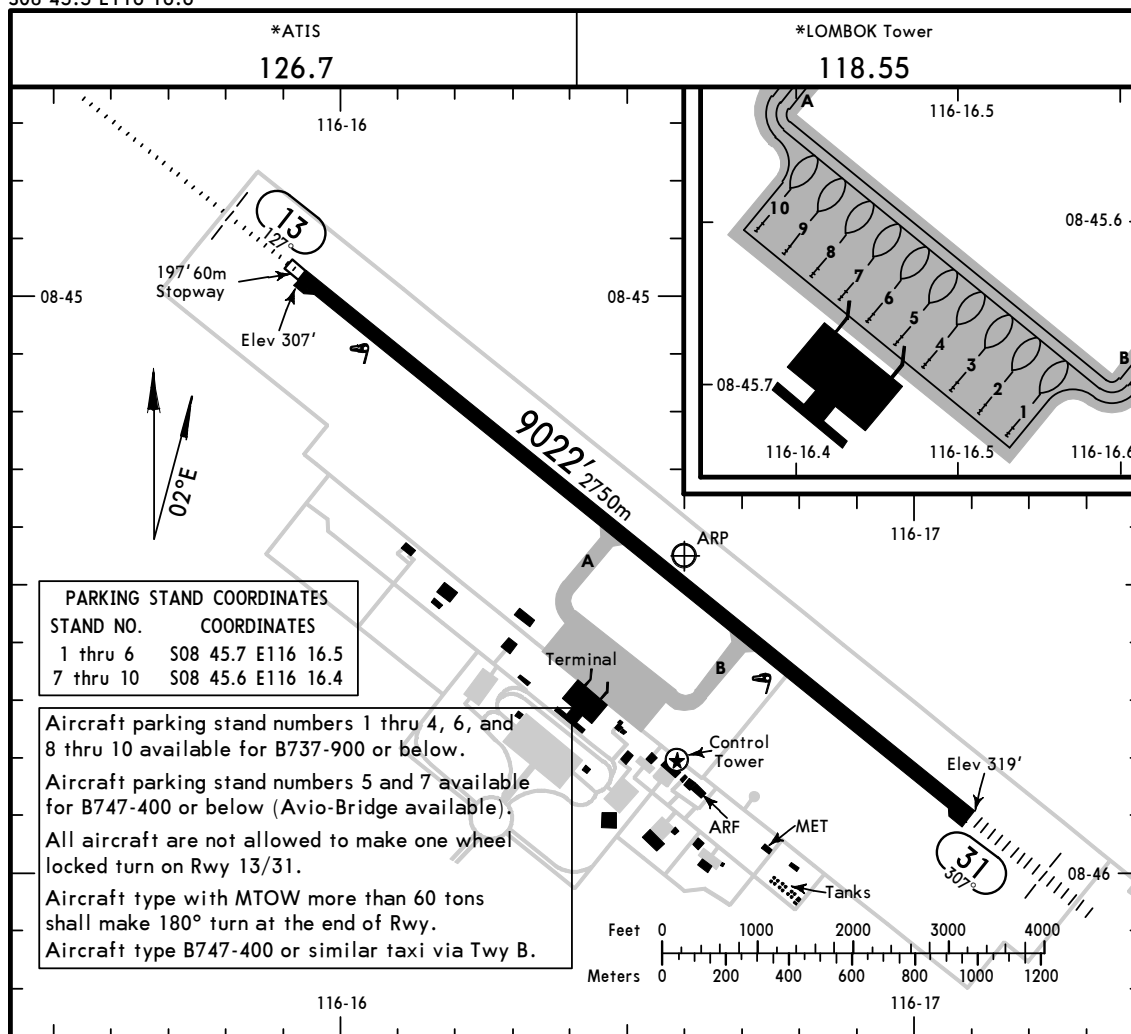
CHANGES: Communications.

© JEPPESSEN, 2011, 2012. ALL RIGHTS RESERVED.

WADL/LOP
Apt Elev 319'
S08 45.5 E116 16.6

JEPPESSEN
24 APR 15 (11-1)

PRAYA, INDONESIA
LOMBOK INTL



ADDITIONAL RUNWAY INFORMATION

RWY		USABLE LENGTHS		TAKE-OFF	WIDTH
		LANDING BEYOND			
13	RL ALS PAPI-L (angle 3.0°)	Threshold	Glide Slope		148'
31	RL MALS PAPI-L (angle 3.0°)				45m

TAKE-OFF

	AIR CARRIER (JAA)		AIR CARRIER (FAR 121)	
	LVP must be in force All Rwys RCLM (Day only) or RL	All Rwys RCLM (Day only) or RL	All Rwys Adequate Vis Ref	
A			2 Eng	
B	250m	400m	3 & 4 Eng	400m
C				
D	300m			

CHANGES: Stopway on runway 13 removed.

© JEPPESSEN, 2011, 2015. ALL RIGHTS RESERVED.