

List of pages in this Trip Kit

Trip Kit Index

Airport Information For FPST

Terminal Charts For FPST

Revision Letter For Cycle 24-2021

Change Notices

Notebook

General Information

Location: SAO TOME STP
ICAO/IATA: FPST / TMS
Lat/Long: N00° 22.67', E006° 42.78'
Elevation: 33 ft

Airport Use: Public
Daylight Savings: Not Observed
UTC Conversion: +0:00 = UTC
Magnetic Variation: 4.0° W

Fuel Types: Jet A-1
Customs: Yes
Airport Type: IFR
Landing Fee: Yes
Control Tower: Yes
Jet Start Unit: No
LLWS Alert: No
Beacon: No

Sunrise: 0544 Z
Sunset: 1750 Z

Runway Information

Runway: 11
Length x Width: 7087 ft x 148 ft
Surface Type: asphalt
TDZ-Elev: 39 ft
Lighting: Edge, ALS

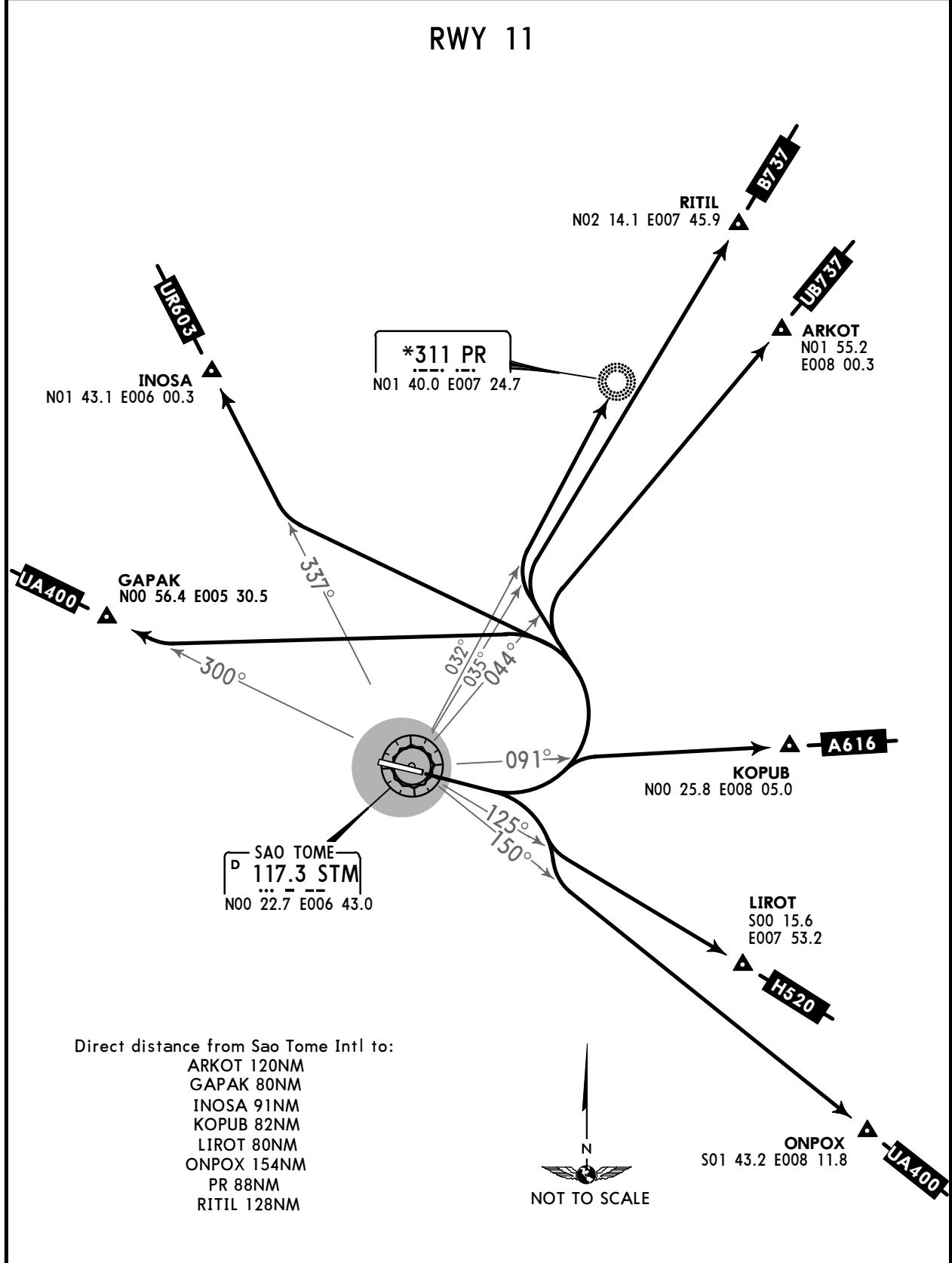
Runway: 29
Length x Width: 7087 ft x 148 ft
Surface Type: asphalt
TDZ-Elev: 16 ft
Lighting: Edge

Communication Information

Sao Tome Tower: 118.900
Sao-Tome Control Approach: 127.500 RCO

FPST/TMS **JEPPESENSAO TOME, SAO TOME & PRINCIPE**
SAO TOME INTL 6 MAY 16 **10-3** **SID**

Apt Elev **33'** Trans level: By ATC Trans alt: 4000'

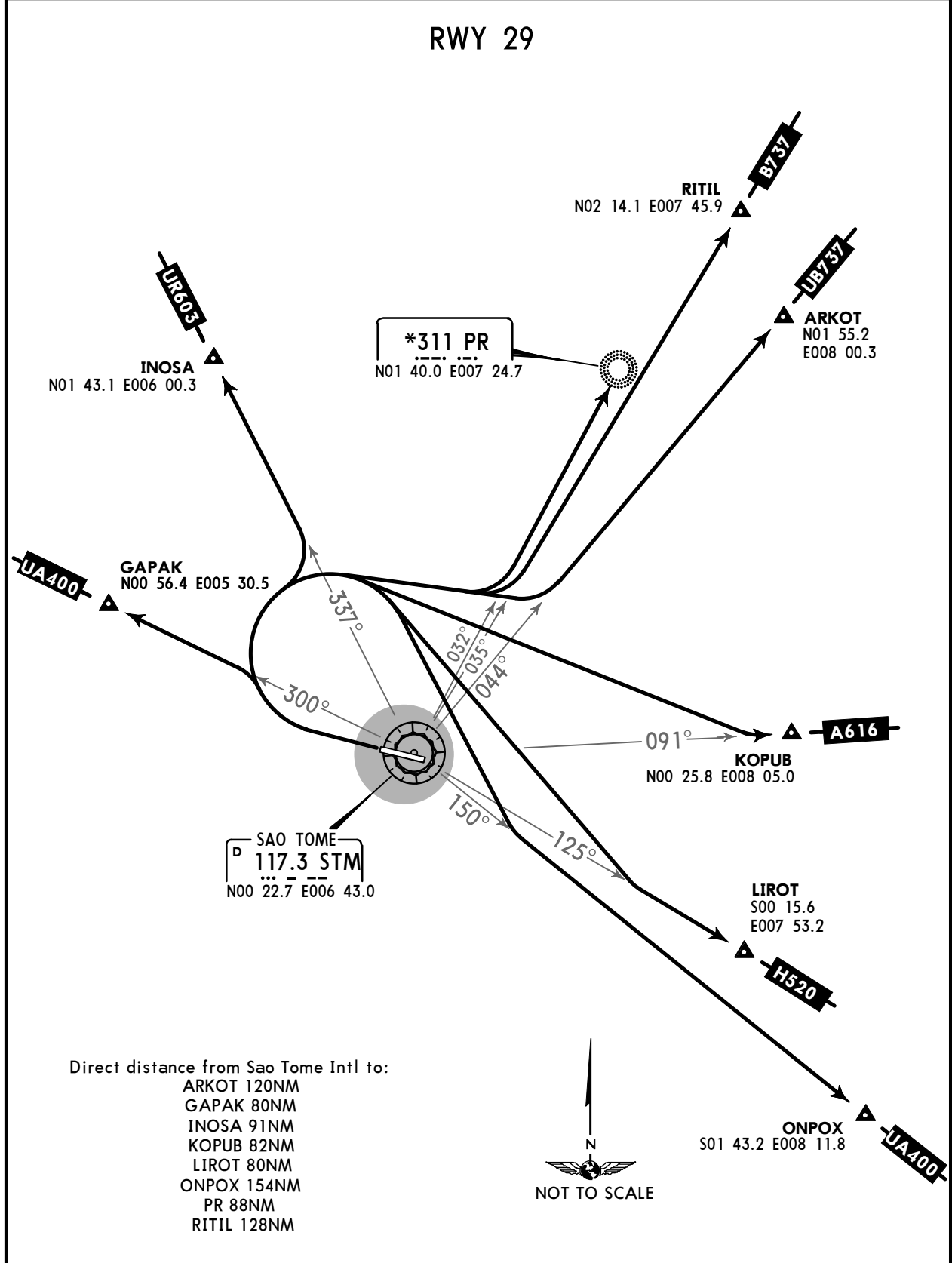


DEPARTURE TO	ROUTING
ABIDJAN	Turn LEFT, intercept STM R-300 to GAPAK.
DOUALA	Turn LEFT, intercept STM R-044 to ARKOT.
LAGOS	Turn LEFT, intercept STM R-337 to INOSA.
LIBREVILLE	Turn LEFT, intercept STM R-091 to KOPUB.
LUANDA	Turn RIGHT, intercept STM R-150 to ONPOX.
MALABO	Turn LEFT, intercept STM R-035 to RITIL.
PORT GENTIL	Turn RIGHT, intercept STM R-125 to LIROT.
PRINCIPE	Turn LEFT, intercept STM R-032 direct to PR.

CHANGES: New chart.

FPST/TMS **JEPPESENSAO TOME, SAO TOME & PRINCIPE**
SAO TOME INTL 6 MAY 16 **(10-3A)** **SID**

Apt Elev **33'** Trans level: By ATC Trans alt: 4000'
 LEFT turns are prohibited after take-off due to mountains.



DEPARTURE TO	ROUTING
ABIDJAN	Turn RIGHT, intercept STM R-300 to GAPAK.
DOUALA	Turn RIGHT, intercept STM R-044 to ARKOT.
LAGOS	Turn RIGHT, intercept STM R-337 to INOSA.
LIBREVILLE	Turn RIGHT, intercept STM R-091 to KOPUB.
LUANDA	Turn RIGHT, intercept STM R-150 to ONPOX.
MALABO	Turn RIGHT, intercept STM R-035 to RITIL.
PORT GENTIL	Turn RIGHT, intercept STM R-125 to LIROT.
PRINCIPE	Turn RIGHT, intercept STM R-032 direct to PR.

CHANGES: New chart.

FPST/TMS

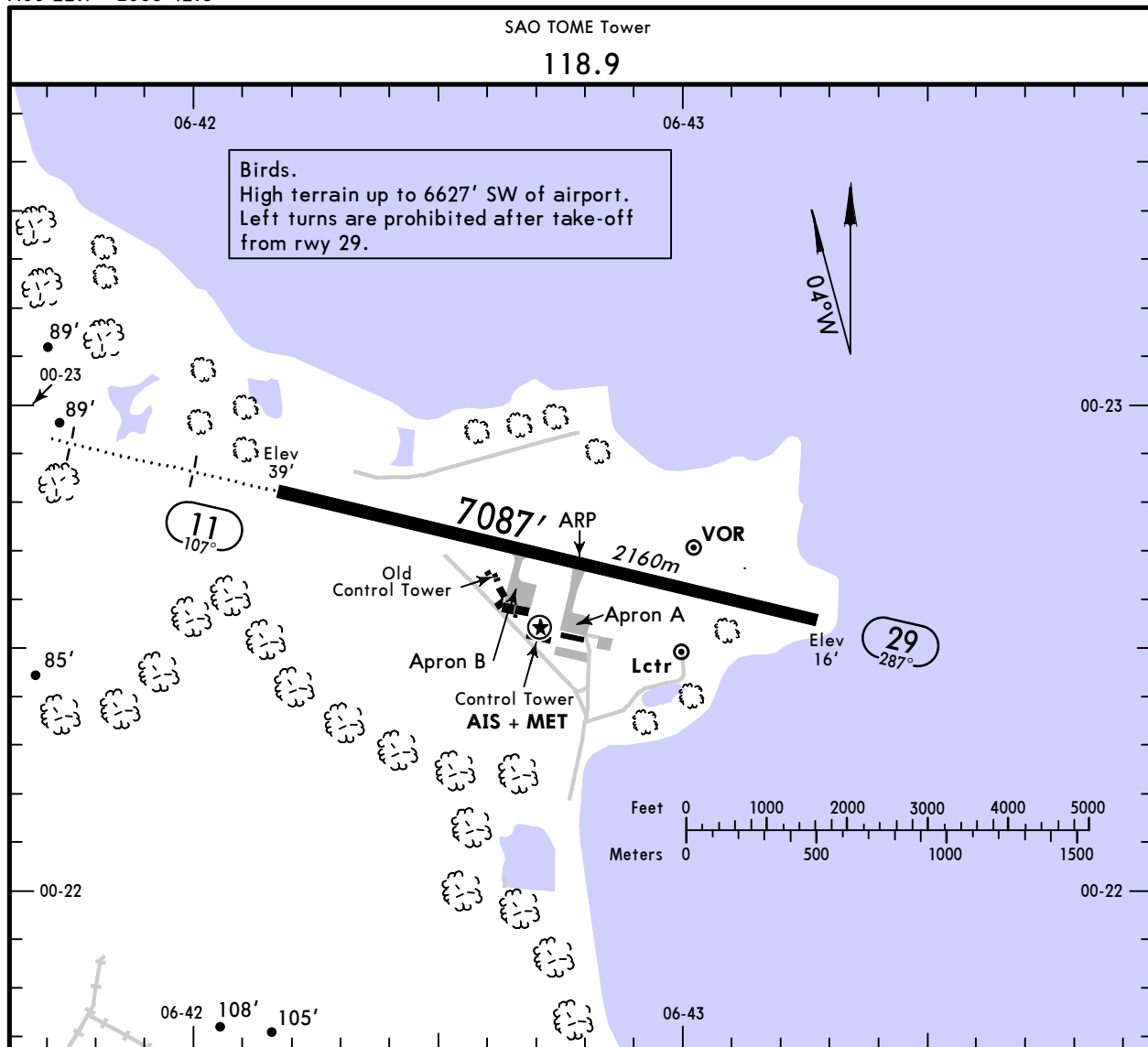
Apt Elev **33'**
N00 22.7 E006 42.8



SAO TOME, SAO TOME & PRINCIPE

26 NOV 10 **(10-9)**

SAO TOME INTL



ADDITIONAL RUNWAY INFORMATION

RWY	USABLE LENGTHS	LANDING BEYOND		TAKE-OFF	WIDTH
		Threshold	Glide Slope		
11	RL (30m) ALS				148'
29	MIRL (30m) PAPI				45m

JAR-OPS

TAKE-OFF **I**

	All Rwys		
	LVP must be in force		
	RCLM (DAY only) or RL	RCLM (DAY only) or RL	NIL (DAY only)
A			
B	250m	400m	500m
C			
D	300m		

I Operators applying U.S. Ops Specs: CL required below 300m.

FPST/TMS



Standard

29 JUN 12

10-9S

SAO TOME, SAO TOME & PRINCIPE SAO TOME INTL

STRAIGHT-IN RWY		A	B	C	D
29	VOR ❶ ❷	650'(634') R1500m	650'(634') R1500m	650'(634') C2900m	650'(634') C2900m
	VOR ❸	650'(634') C3100m	650'(634') C3100m	650'(634') C3300m	650'(634') C3300m
	LCTR ❶ ❷	600'(584') R1500m	600'(584') R1500m	600'(584') C2700m	600'(584') C2700m
	LCTR ❸	600'(584') C2900m	600'(584') C2900m	600'(584') C3100m	600'(584') C3100m

- ❶ Continuous Descent Final Approach.
- ❷ with FMS.
- ❸ w/o FMS.

CIRCLE-TO-LAND ❹	100 KT	135 KT	180 KT	205 KT
	620'(587') V1500m ❺	620'(587') V1600m ❺	720'(687') V2400m ❺	740'(707') V3600m

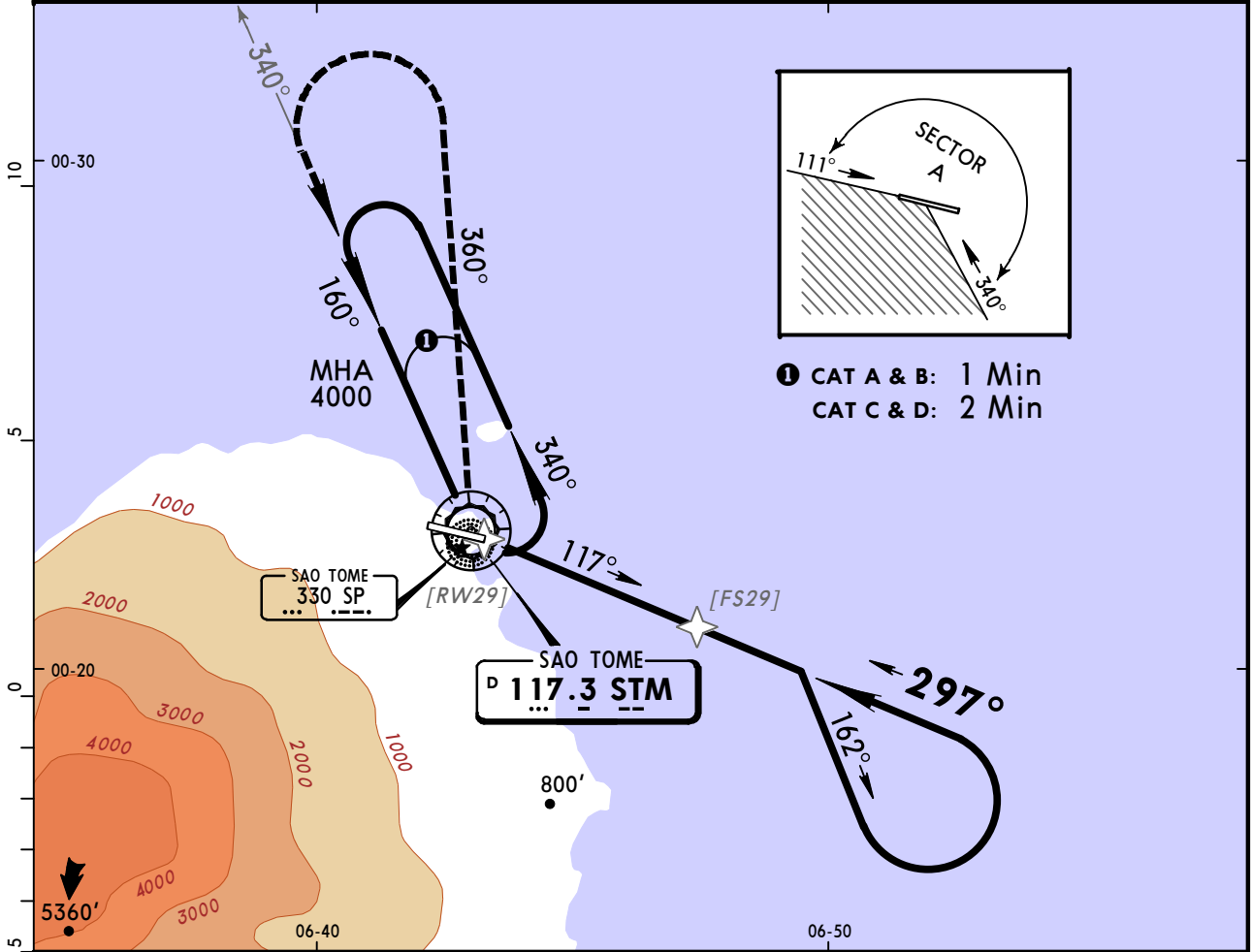
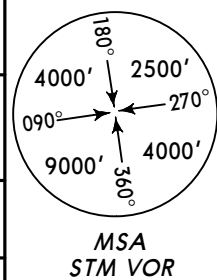
- ❹ Within Sector A (see Plan View)
- ❺ or higher minimums of preceding straight-in approach.

TAKE-OFF RWY 11, 29

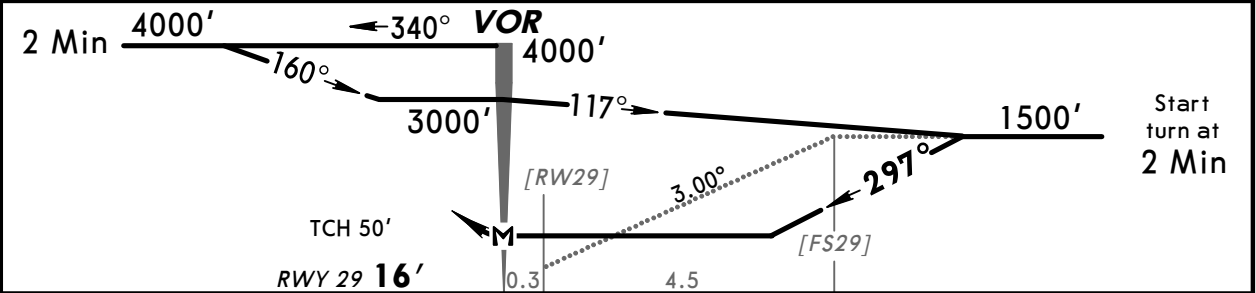
LVP must be in force			
	RCLM (DAY only) or RL	RCLM (DAY only) or RL	NIL (DAY only)
A	250m	400m	500m
B			
C			
D	300m		

FPST/TMS SAO TOME INTL 18 NOV 11 (13-1) SAO TOME, SAO TOME & PRINCIPE VOR Rwy 29

SAO TOME Approach			SAO TOME Tower		
127.5			118.9		
VOR STM 117.3	Final Apch Crs 297°	Minimum Alt No FAF	MDA(H) 650' (634')	Apt Elev 33'	RWY 16'
MISSED APCH: Turn RIGHT immediately onto 360° climbing to 4000', then turn LEFT to VOR on R-340 inbound.					
Alt Set: hPa		Rwy Elev: 1 hPa	Trans level: By ATC		Trans alt: 4000'



① CAT A & B: 1 Min
CAT C & D: 2 Min

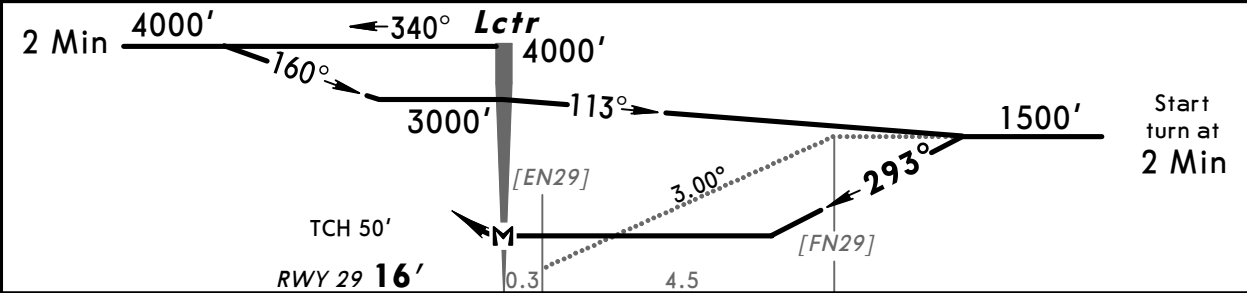
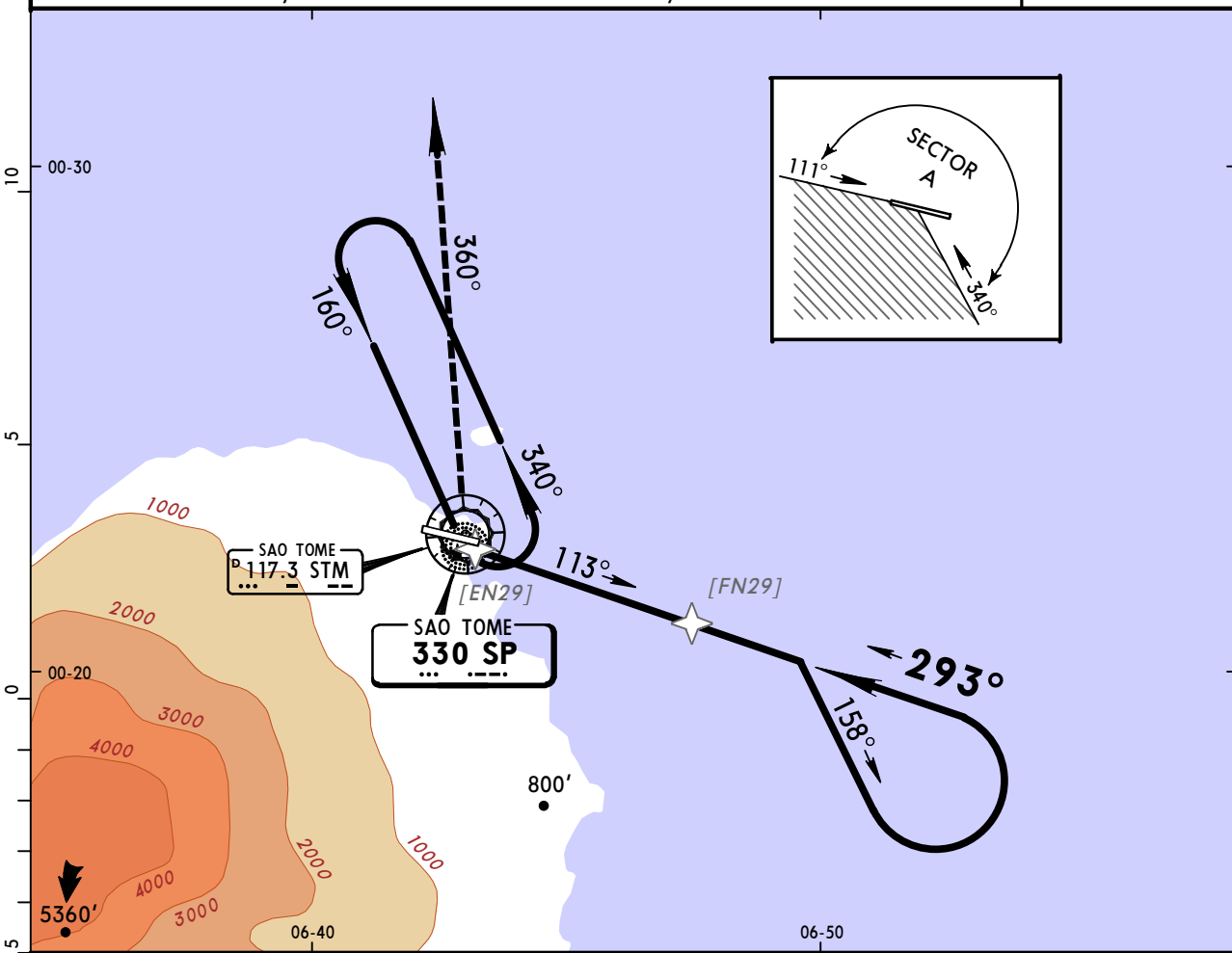


Gnd speed-Kts	70	90	100	120	140	160	PAPI	Immediate RT on 360°	4000'
Descent Angle	3.00°	372	478	531	637	849			
MAP at VOR									

JAR-OPS		STRAIGHT-IN LANDING RWY 29		CIRCLE-TO-LAND	
		MDA(H) 650' (634')		Within Sector A (see above)	
A	RVR 1500m	Max Kts	MDA(H)	VIS	
B		100	650' (617')	1500m	
C	RVR 2000m	135	650' (617')	1600m	
D		180	720' (687')	2400m	
		205	740' (707')	3600m	

FPST/TMS SAO TOME INTL 18 NOV 11 (16-1) SAO TOME, SAO TOME & PRINCIPE Lctr Rwy 29

SAO TOME Approach			SAO TOME Tower		
127.5			118.9		
Lctr SP 330	Final Apch Crs 293°	Minimum Alt No FAF	MDA(H) 600' (584')	Apt Elev 33' RWY 16'	
MISSED APCH: Turn RIGHT immediately onto 360° climbing to 4000', then return to Lctr on 160°.					
Alt Set: hPa		Rwy Elev: 1 hPa	Trans level: By ATC		Trans alt: 4000'



Gnd speed-Kts	70	90	100	120	140	160	PAPI	Immediate RT on 360°	4000'	
Descent Angle	3.00°	372	478	531	637	743				849
MAP at Lctr										

JAR-OPS		STRAIGHT-IN LANDING RWY 29		CIRCLE-TO-LAND	
		MDA(H) 600' (584')		Within Sector A (see above)	
A	RVR 1500m	Max Kts	MDA(H)	VIS	
B		100	600' (567')	1500m	
C	RVR 2000m	135	620' (587')	1600m	
D		180	720' (687')	2400m	
		205	740' (707')	3600m	

PANS OPS

Chart changes since cycle 23-2021

ADD = added chart, REV = revised chart, DEL = deleted chart.

ACT	PROCEDURE IDENT	INDEX	REV DATE	EFF DATE
-----	-----------------	-------	----------	----------

SAO TOME, (SAO TOME INTL - FPST)

TERMINAL CHART CHANGE NOTICES

No Chart Change Notices for Airport FPST

SUDU..PONPA..PTA..GBE..DIL..VIE..SAVT