

List of pages in this Trip Kit

Trip Kit Index

Airport Information For LKVO

Terminal Charts For LKVO

Revision Letter For Cycle 24-2021

Change Notices

Notebook

General Information

Location: PRAGUE CZE
ICAO/IATA: LKVO / VOD
Lat/Long: N50° 13.00', E014° 23.73'
Elevation: 919 ft

Airport Use: Public
Daylight Savings: Observed
UTC Conversion: -1:00 = UTC
Magnetic Variation: 4.0° E

Fuel Types: 100 Octane (LL), Jet A-1
Customs: Yes
Airport Type: IFR
Landing Fee: Yes
Control Tower: Yes
Jet Start Unit: No
LLWS Alert: No
Beacon: No

Sunrise: 0613 Z
Sunset: 1621 Z

Runway Information

Runway: 10
Length x Width: 8202 ft x 148 ft
Surface Type: asphalt
TDZ-Elev: 880 ft
Lighting: Edge

Runway: 11
Length x Width: 5906 ft x 164 ft
Surface Type: grass
TDZ-Elev: 894 ft

Runway: 28
Length x Width: 8202 ft x 148 ft
Surface Type: asphalt
TDZ-Elev: 915 ft
Lighting: Edge, ALS

Runway: 29
Length x Width: 5906 ft x 164 ft
Surface Type: grass
TDZ-Elev: 915 ft

Communication Information

Vodochody Tower: 133.080

Vodochody Radio: 123.030

Vodochody Radar: 127.480

LKVO VODOCHODY



PRAGUE, CZECH

4 NOV 16

20-1R

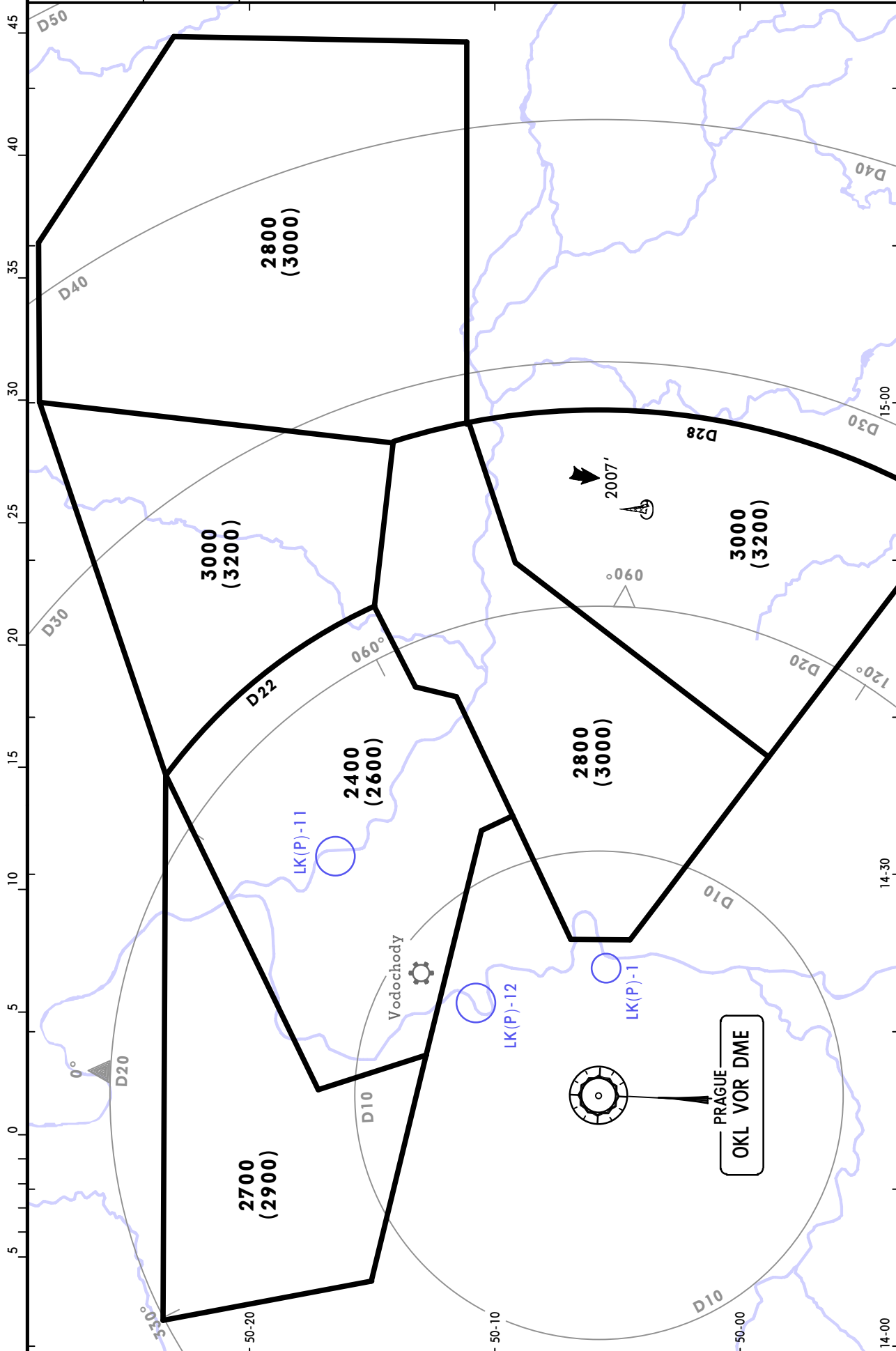
Eff 10 Nov

RADAR MINIMUM ALTITUDES

*VODOCHODY
Radar
127.480

Apt Elev
919'

Alt Set: hPa (MM on request) Trans level: By ATC Trans alt: 5000'
Altitudes in brackets are corrected for low temperatures and apply always for the period from 15 NOV until 15 MAR, unless otherwise published by NOTAM.

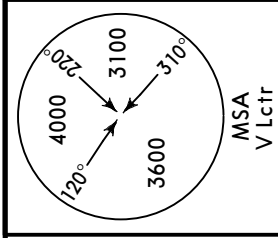


LKVO/VOD
VODOCHODY

JEPPESEN
7 MAY 21 20-2 Eff 20 May

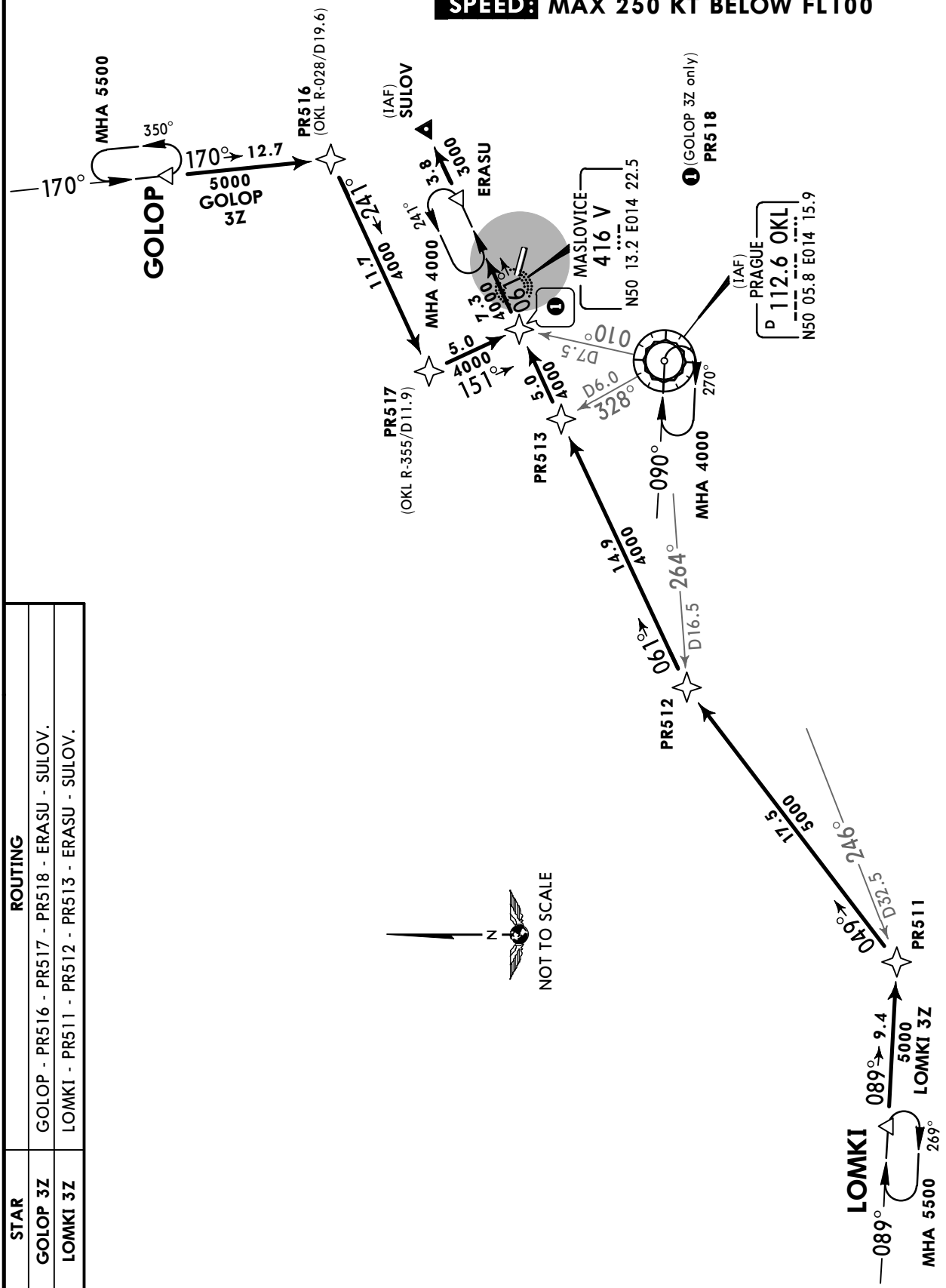
PRAGUE, CZECHIA
RNAV STAR

VODOCHODY Radim (CTR/TMA status) 123.030	Apt Elev 919'	Alt Set: hPa (MM on request) Trans level: By ATC Trans alt: 5000' 1. RNAV-1 required. 2. At initial contact with RUZYNE Radar state only callsign.
---	-------------------------	---

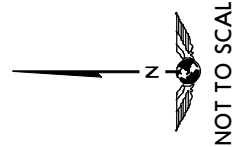


**GOLOP 3Z [GOL03Z]
LOMKI 3Z [LOMK3Z]
RNAV ARRIVALS
(RWYS 10, 28)**

SPEED: MAX 250 KT BELOW FL100



STAR	ROUTING
GOLOP 3Z	GOLOP - PR516 - PR517 - PR518 - ERASU - SULOV.
LOMKI 3Z	LOMKI - PR511 - PR512 - PR513 - ERASU - SULOV.



CHANGES: None.

LKVO/VOD
VODOCHODY

JEPPESEN
7 MAY 21 (20-2A) Eff 20 May

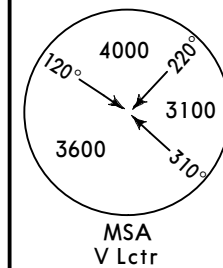
PRAGUE, CZECHIA
RNAV STAR

VODOCHODY Radim
(CTR/TMA status)
123.030

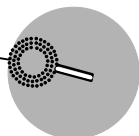
Apt Elev
919'

Alt Set: hPa (MM on request)
Trans level: By ATC Trans alt: 5000'
1. RNAV-1 required.
2. At initial contact with RUZYNE Radar state only callsign.

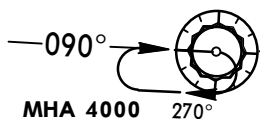
APRAQ 1Z [APRA1Z]
VLASIM 5Z (VLM 5Z) [VLM5Z]
RNAV ARRIVALS
(RWYS 10, 28)
SPEED: MAX 250 KT BELOW FL100



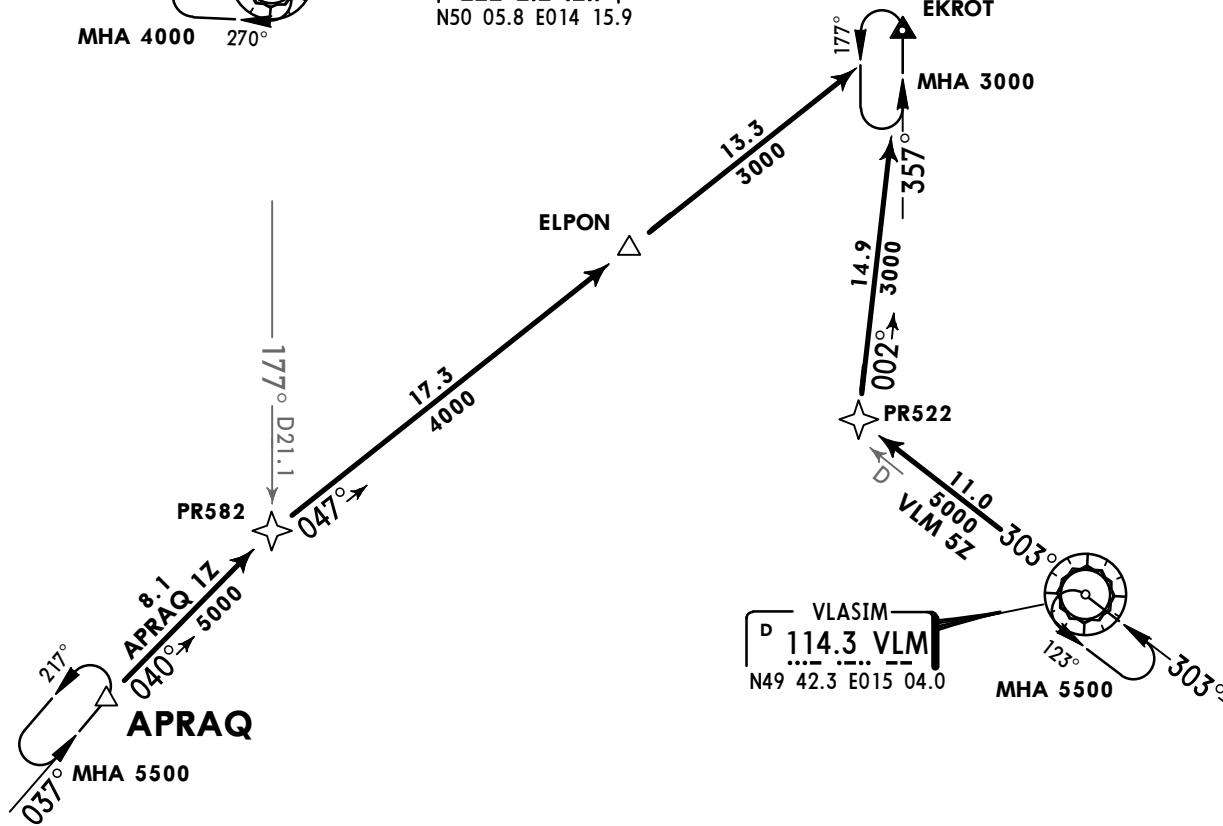
MASLOVICE
416 V
N50 13.2 E014 22.5



(IAF)
PRAGUE
D 112.6 OKL
N50 05.8 E014 15.9



(IAF)
EKROT
MHA 3000



VLASIM
D 114.3 VLM
N49 42.3 E015 04.0
MHA 5500



STAR	ROUTING
APRAQ 1Z	APRAQ - PR582 - ELPON - EKROT.
VLM 5Z	VLM VOR - PR522 - EKROT.

LKVO
VODOCHODY

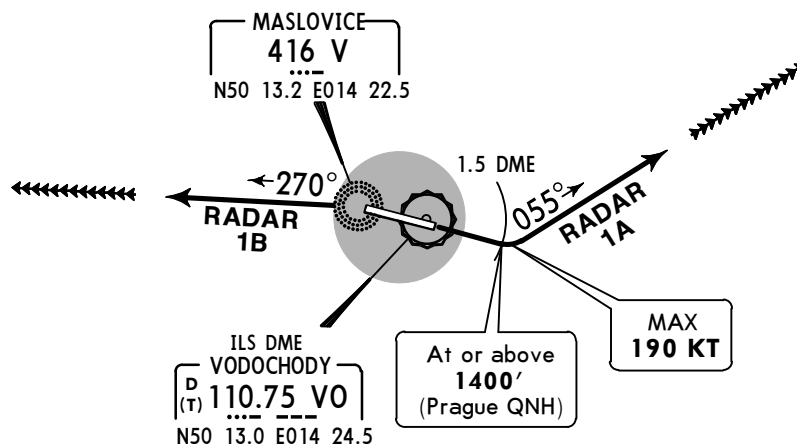
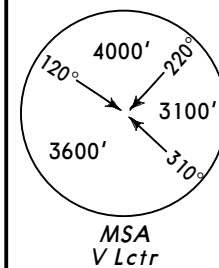
JEPPESEN
14 NOV 14 **20-3**

PRAGUE, CZECH
RADAR SID

Apt Elev
919'

Alt Set: hPa (MM on request)
Trans level: By ATC Trans alt: 5000'
1. Contact PRAGUE Radar after take-off, change according to ATC.
2. Aircraft departing towards 115.7 OKG, RAPET, RUDAP or VARIK and climbing to FL280 or above, shall reach FL280 not later than above aforesaid points.

RADAR ONE ALFA (RADAR 1A)[RADA1A]
RADAR ONE BRAVO (RADAR 1B)[RADA1B]
RWYS 10, 28 DEPARTURES



These SIDs require a minimum climb gradient of 5% up to 3000' due to noise abatement.

Gnd speed-KT	75	100	150	200	250	300
5% V/V (fpm)	380	506	760	1013	1266	1519

Initial climb clearance **3000'** (Prague QNH)

SID	RWY	ROUTING
RADAR 1A	10	On runway heading to VO 1.5 DME, turn LEFT, 055° track, EXPECT RADAR vectoring.
RADAR 1B	28	After passing V, turn LEFT, 270° track, EXPECT RADAR vectoring.

NOISE ABATEMENT

GENERAL

Overflights of build-up areas of all villages in vicinity of APT below 2000' are prohibited. Avoid repeated turning in the same area during the flight.

Take-offs and landings of ACFT certified in accordance with ICAO Annex 16/I, Volume II, Chapter 2 or ACFT not certified in accordance with ICAO Annex 16/I, Volume II is not permitted.

VISUAL APPROACH

An ACFT carrying out the visual approach to RWY 10/28 or RWY 11/29 is not allowed to descend below 2000' before interception of extended RWY axis.

PREFERENTIAL RUNWAY SYSTEM

Take-offs and landings are without restriction. In case when usage of both RWY 10 and 28 is possible the RWY 28 is preferred.

RUN-UP TESTS

Between 2200-0600LT the engine test runs in other than idle thrust are not allowed.

It is allowed to carry out the engine test runs only on places specified by the aerodrome operator.

REVERSE THRUST

Between 2200-0600LT the reverse thrust other than idle thrust shall be used only if it is necessary from safety reasons.

EXCEPTIONS

The procedures should be different from procedures specified above in case of:

- need of ensuring flight safety,
- flights associated with the production program of the company AERO Vodochody a.s.,
- search and rescue flights,
- flights of Civil Aviation Authority ACFT conducting a state supervision,
- flights of ACFT in service of Police CR during performance of tasks,
- flights for human life saving;
- humanitarian flights in case of risk of delay.

LKVO/VOD

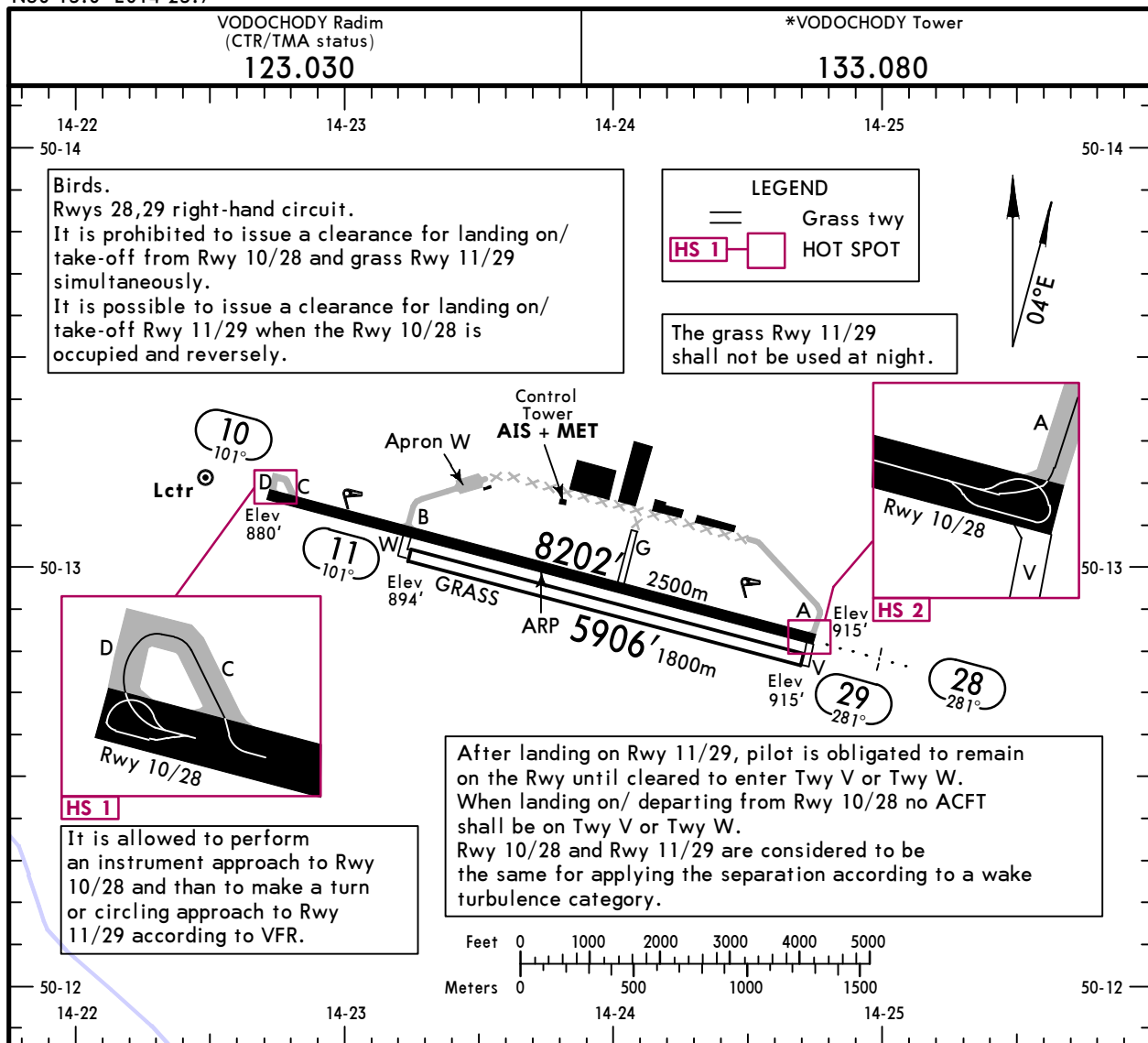
Apt Elev **919'**
N50 13.0 E014 23.7



15 NOV 19 **(20-9)**

PRAGUE, CZECHIA

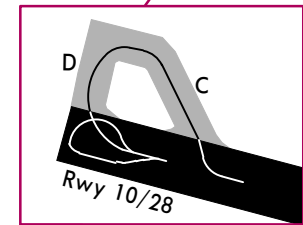
VODOCHODY



Birds.
Rwys 28,29 right-hand circuit.
It is prohibited to issue a clearance for landing on/ take-off from Rwy 10/28 and grass Rwy 11/29 simultaneously.
It is possible to issue a clearance for landing on/ take-off Rwy 11/29 when the Rwy 10/28 is occupied and reversely.

LEGEND
= Grass twy
HS 1 HOT SPOT

The grass Rwy 11/29 shall not be used at night.



HS 1
It is allowed to perform an instrument approach to Rwy 10/28 and then to make a turn or circling approach to Rwy 11/29 according to VFR.

After landing on Rwy 11/29, pilot is obligated to remain on the Rwy until cleared to enter Twy V or Twy W. When landing on/ departing from Rwy 10/28 no ACFT shall be on Twy V or Twy W. Rwy 10/28 and Rwy 11/29 are considered to be the same for applying the separation according to a wake turbulence category.



ADDITIONAL RUNWAY INFORMATION

RWY	MIRL		USABLE LENGTHS		TAKE-OFF	WIDTH
	Threshold	PAPI-L (angle 3.0°)	Threshold	Glide Slope		
10	MIRL (60m)	PAPI-L (angle 3.0°)			①	148'
28	MIRL (60m)	MIALS PAPI-L (angle 3.0°)		7118' 2170m		45m
11	Grass					164'
29						50m

① TAKE-OFF RUN AVAILABLE

RWY 10:

From rwy head 8202' (2500m)
twy B int 6234' (1900m)
twy G int ② 2887' (880m)

RWY 28:

From rwy head 8202' (2500m)
twy B int 1969' (600m)
twy G int ② 5315' (1620m)

② Day only.

Standard

TAKE-OFF

	MIRL or RL	NIL (Day only)
A		RVR 800m
B	RVR 800m	VIS 1200m
C		
D	NOT APPLICABLE	

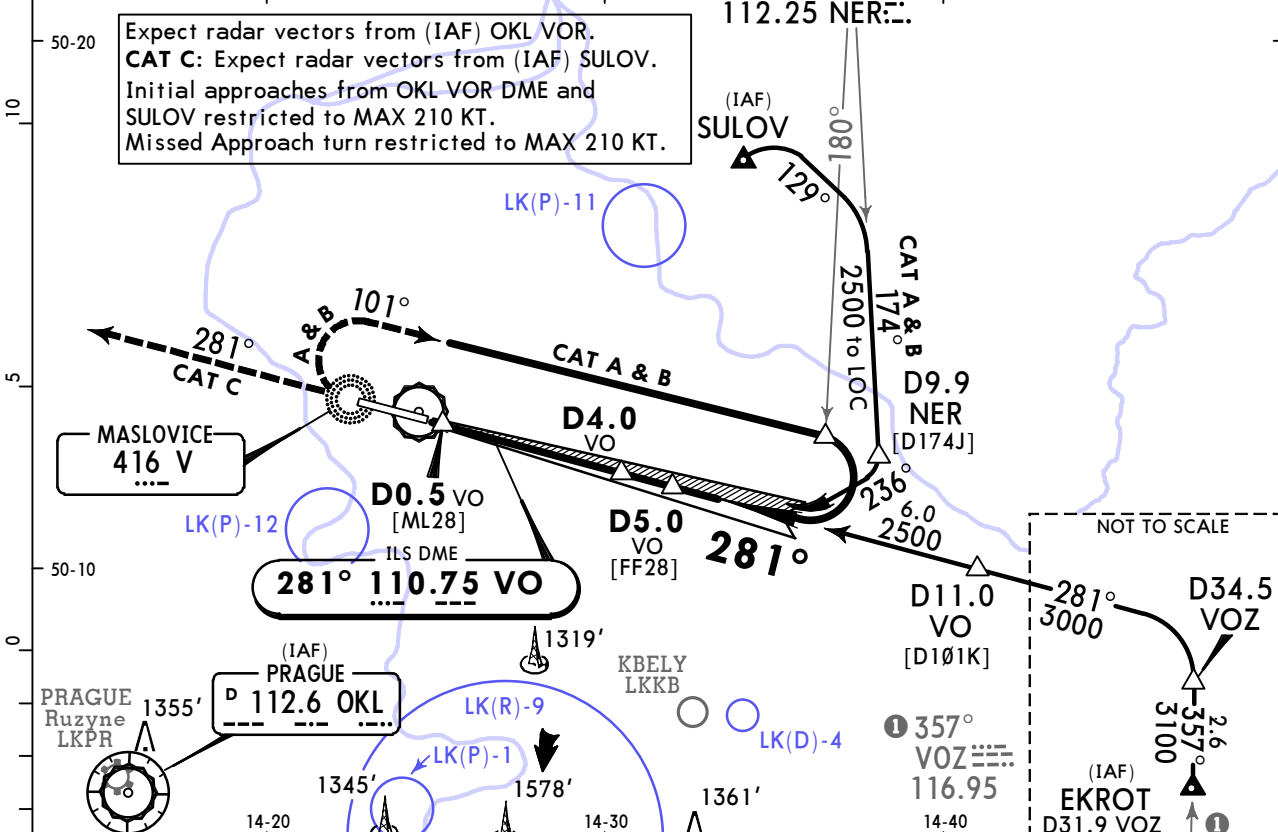
LKVO/VOD
VODOCHODY

JEPPesen
15 NOV 19 **(21-1)** **CAT A, B & C**

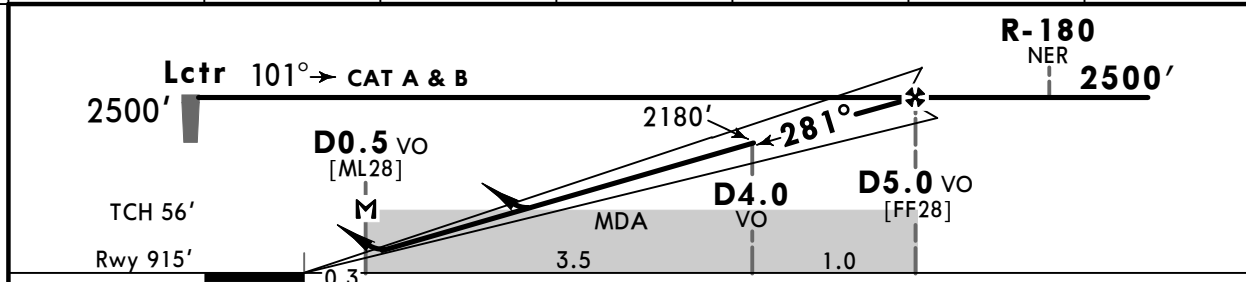
PRAGUE, CZECHIA
ILS Rwy 28

VODOCHODY Radim (CTR/TMA status) 123.030		*VODOCHODY Radar (APP) 127.480		*VODOCHODY Tower 133.080	
LOC VO 110.75	Final Apch Crs 281°	D5.0 VO 2500' (1585')	ILS DA(H) 1115' (200')	Apt Elev 919' Rwy 915'	<p>MSA V Lctr</p>
<p>MISSED APCH: CAT C: Climb on track 281° to 2500', expect radar vectors. CAT A & B: Climb on track 281° to Lctr, then turn RIGHT and continue on racetrack. Climb to 2500'. MISSED APCH WITH COMM FAILURE: Climb on track 281° to 2500'. Passing D5.0 VO turn RIGHT to Lctr.</p>					

DME required. Alt Set: hPa Rwy Elev: 33 hPa Trans level: By ATC Trans alt: 5000'



LOC (GS out)	VO DME	1.0	2.0	3.0	4.0	5.0
	ALTITUDE	1230'	1540'	1860'	2180'	2500'



Gnd speed-Kts	70	90	100	120	140	160	MIALS PAPI Refer to Missed Apch above
ILS GS or LOC Descent angle	3.00°	372	478	531	637	743	
MAP at D0.5 VO							

PANS OPS	Standard				STRAIGHT-IN LANDING RWY 28		CIRCLE-TO-LAND	
	ILS		LOC (GS out) CDF A				Not authorized South of airport	
	DA(H) 1115' (200')		DA/MDA(H) 1280' (365')					
	FULL		ALS out		ALS out		Max Kts	
	A	RVR 850m VIS 1200m	1200m	RVR 1300m VIS 1800m	RVR 1500m VIS 1800m	100	1330' (411')	1500m
B			RVR 1300m VIS 1950m	RVR 1500m VIS 1950m	135	1420' (501')	1600m	
C			RVR 1400m VIS 2100m	RVR 1700m VIS 2100m	180	1520' (601')	2400m	
D	NOT APPLICABLE				D	NOT APPLICABLE		

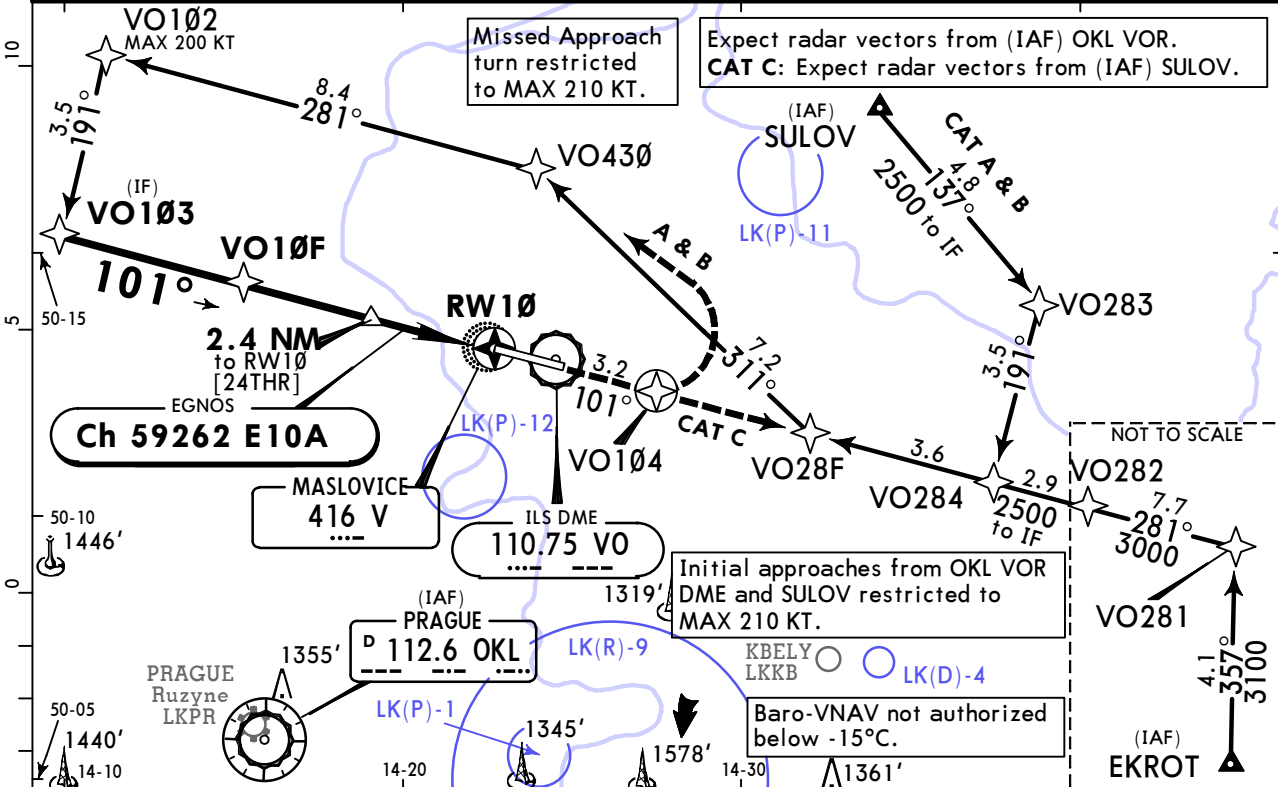
LKVO/VOD VODOCHODY

JEPPESEN
29 NOV 19
Eff 5 Dec **(22-1)** CAT A, B & C

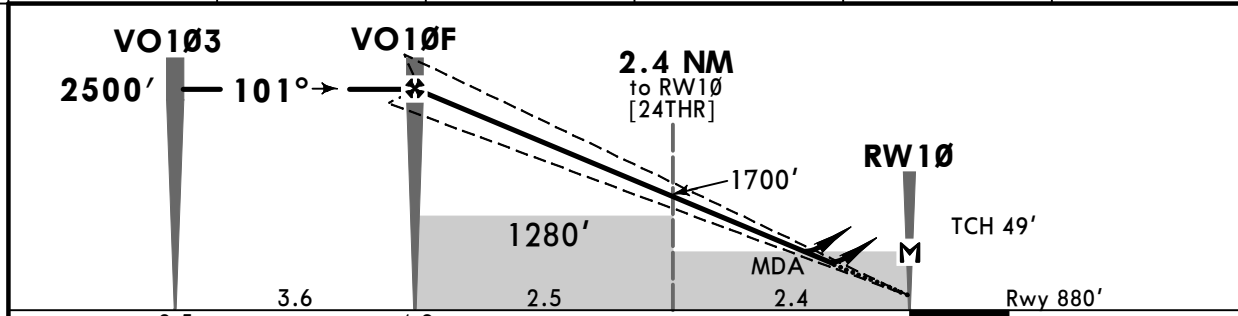
PRAGUE, CZECHIA RNP Rwy 10

VODOCHODY Radim (CTR/TMA status) 123.030		*VODOCHODY Radar (APP) 127.480		*VODOCHODY Tower 133.080	
EGNOS Ch 59262 E10A	Final Apch Crs 101°	VO10F 2500' (1620')	LPV DA(H) 1180' (300')	Apt Elev 919'	
MISSED APCH: CAT C: Climb on track 101° to 2500', expect radar vectors. CAT A & B: Climb to VO104, then turn LEFT to VO430, then turn LEFT to VO102. Climb to 2500'. MISSED APCH WITH COMM FAILURE: Climb on track 101° to 2500'. Passing D5.0 VO turn LEFT to Lctr.				Rwy 880'	

RNP APCH Alt Set: hPa Rwy Elev: 32 hPa Trans level: By ATC Trans alt: 5000'



DIST to RW10	4.9	4.0	3.0	2.0	1.0
ALTITUDE	2500'	2200'	1880'	1570'	1250'



Gnd speed-Kts	70	90	100	120	140	160	PAPI-L	Refer to Missed Apch above
Glide Path Angle	3.00°	372	478	531	637	743		
LPV, LNAV/VNAV: MAP at DA								
LNAV: MAP at RW10								

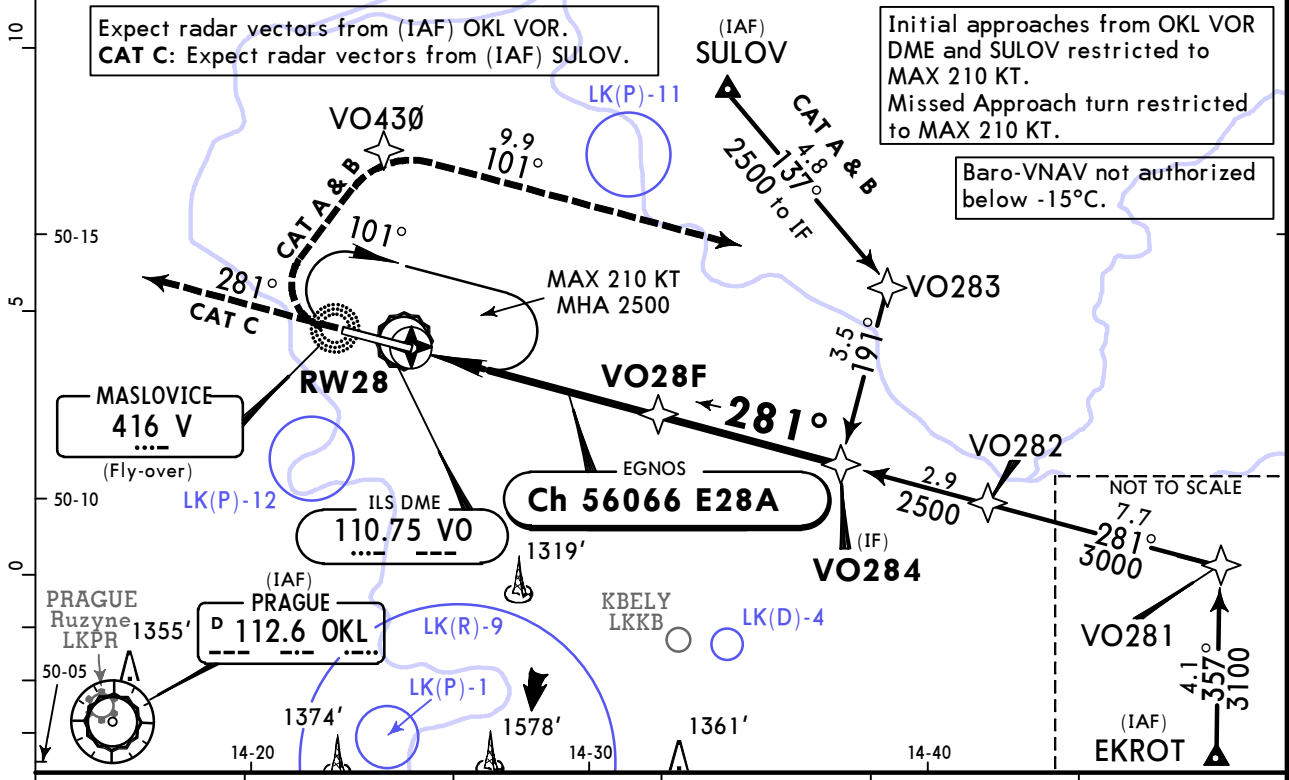
PANS OPS	Standard STRAIGHT-IN LANDING RWY 10			CIRCLE-TO-LAND	
	LPV	LNAV/VNAV	LNAV CDEFA DA/MDA(H)	Not authorized South of airport	
	DA(H) 1180' (300')	DA(H) 1180' (300')	1220' (340')	Max Kts	MDA(H) _____ VIS _____
	A RVR 1500m VIS 1650m	RVR 1500m VIS 1650m	RVR 1500m VIS 1800m	100	1330' (411') 1500m
	B RVR 1500m VIS 1650m	RVR 1500m VIS 1650m	RVR 1500m VIS 1950m	135	1420' (501') 1600m
C		RVR 1500m VIS 2100m	180	1520' (601') 2400m	
D	NOT APPLICABLE			D	NOT APPLICABLE

LKVO/VOD VODOCHODY

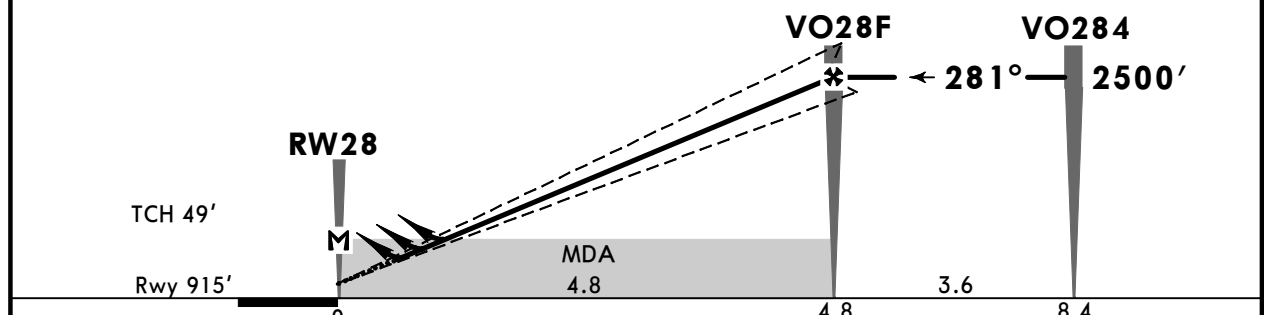
JEPESEN
29 NOV 19
Eff 5 Dec **(22-2)** CAT A, B & C

PRAGUE, CZECHIA RNP Rwy 28

VODOCHODY Radim (CTR/TMA status) 123.030		*VODOCHODY Radar (APP) 127.480		*VODOCHODY Tower 133.080	
EGNOS Ch 56066 E28A	Final Apch Crs 281°	VO28F 2500' (1585')	LPV DA(H) Refer to Minimums	Apt Elev 919'	Rwy 915'
MISSED APCH: CAT C: Climb on track 281° to 2500', expect radar vectors. CAT A & B: Climb to Lctr, then turn RIGHT to VO430, then turn RIGHT to VO283. Climb to 2500'. MISSED APCH WITH COMM FAILURE: Climb on track 281° to D5.0 VO, then turn RIGHT to Lctr.					
RNP APCH	Alt Set: hPa	Rwy Elev: 33 hPa	Trans level: By ATC	Trans alt: 5000'	



DIST to RW28	1.0	2.0	3.0	4.0	4.8
ALTITUDE	1280'	1600'	1920'	2240'	2500'



Gnd speed-Kts	70	90	100	120	140	160	MIALS PAPI Refer to Missed Apch above
Glide Path Angle	3.00°	372	478	531	637	743	
LPV, LNAV/VNAV: MAP at DA							
LNAV: MAP at RW28							

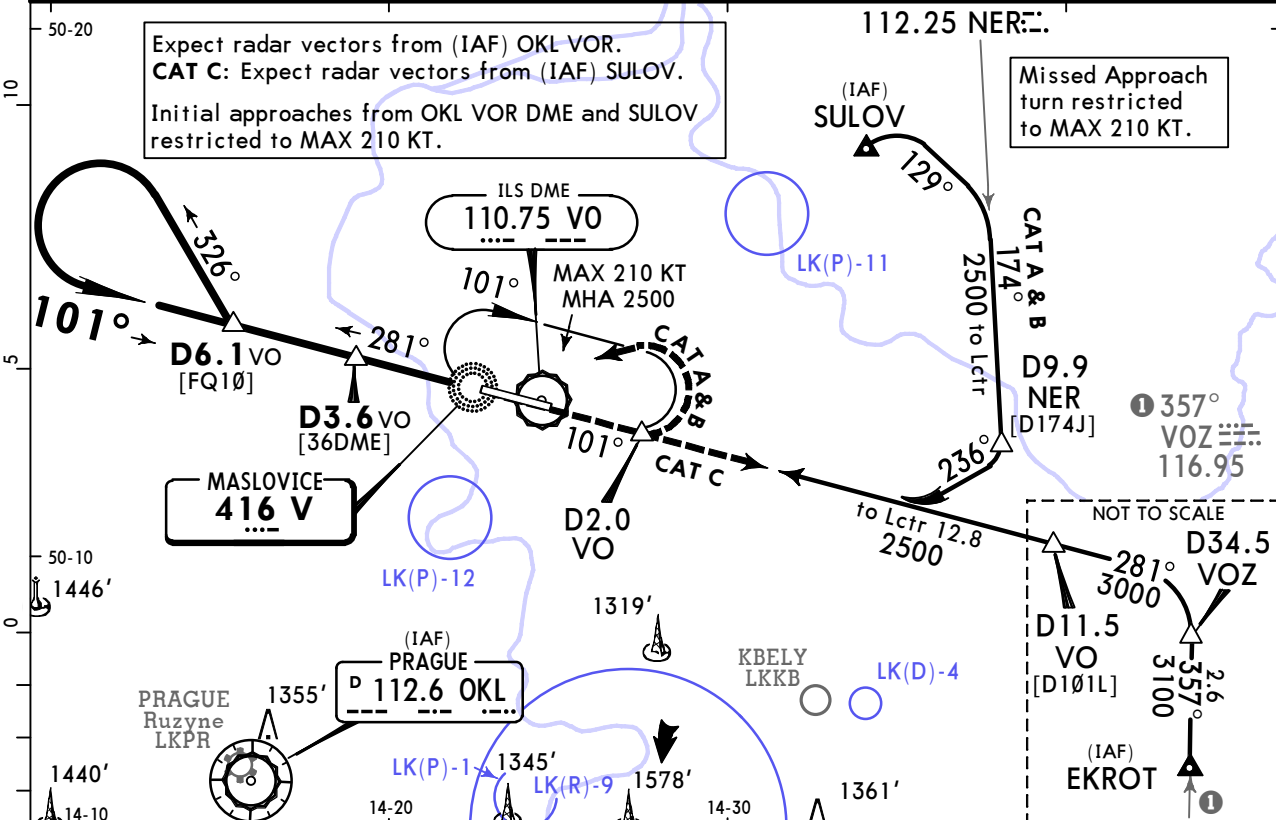
Standard STRAIGHT-IN LANDING RWY 28						CIRCLE-TO-LAND		
LPV AB: 1165' (250')		LNAV/VNAV DA(H) 1255' (340')		LNAV CDFA DA/MDA(H) 1280' (365')		Not authorized South of airport		
DA(H) C: 1175' (260')		ALS out		ALS out		Max Kts	MDA(H) VIS	
A	RVR 1100m	RVR 1300m	RVR 1100m	RVR 1500m	RVR 1300m	RVR 1500m	100 1330' (411') 1500m	
B	VIS 1650m	VIS 1650m	VIS 1650m	VIS 1650m	VIS 1950m	VIS 1950m	135 1420' (501') 1600m	
C					RVR 1400m	RVR 1700m	180 1520' (601') 2400m	
D	NOT APPLICABLE						D	NOT APPLICABLE

LKVO/VOD
VODOCHODY

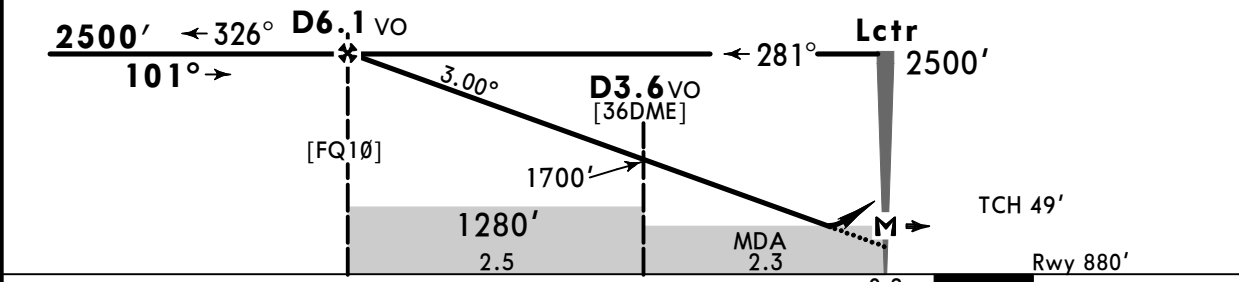
JEPPESEN
15 NOV 19 **(26-1)** CAT A, B & C

PRAGUE, CZECHIA
NDB Rwy 10

VODOCHODY Radim (CTR/TMA status) 123.030		*VODOCHODY Radar (APP) 127.480		*VODOCHODY Tower 133.080	
Lctr V 416	Final Apch Crs 101°	D6.1 VO 2500' (1620')	DA/MDA(H) 1220' (340')	Apt Elev 919' Rwy 880'	<p>MSA V Lctr</p>
<p>MISSED APCH: CAT C: Climb on track 101° to 2500', expect radar vectors. CAT A & B: Climb on track 101° to D2.0 VO, then turn LEFT to Lctr. Climb to 2500'. MISSED APCH WITH COMM FAILURE: Climb on track 101° to D5.0 VO, then turn LEFT to Lctr. Climb to 2500'.</p>					
Alt Set: hPa		Rwy Elev: 32 hPa		Trans level: By ATC	
DME required.					



VO DME	6.1	6.0	5.0	4.0	3.0	2.0
ALTITUDE	2500'	2470'	2150'	1830'	1510'	1200'



Gnd speed-Kts	70	90	100	120	140	160	PAPI-L	Refer to Missed Apch above
Descent angle	3.00°	372	478	531	637	743		
MAP at Lctr	Standard						CIRCLE-TO-LAND	

STRAIGHT-IN LANDING RWY 10			CIRCLE-TO-LAND		
CDFA			Not authorized South of airport		
DA/MDA(H) 1220' (340')			Max Kts	MDA(H)	VIS
A	RVR 1500m VIS 1800m		100	1330' (411')	1500m
B	RVR 1500m VIS 1950m		135	1420' (501')	1600m
C	RVR 1500m VIS 2100m		180	1520' (601')	2400m
D	NOT APPLICABLE		D	NOT APPLICABLE	

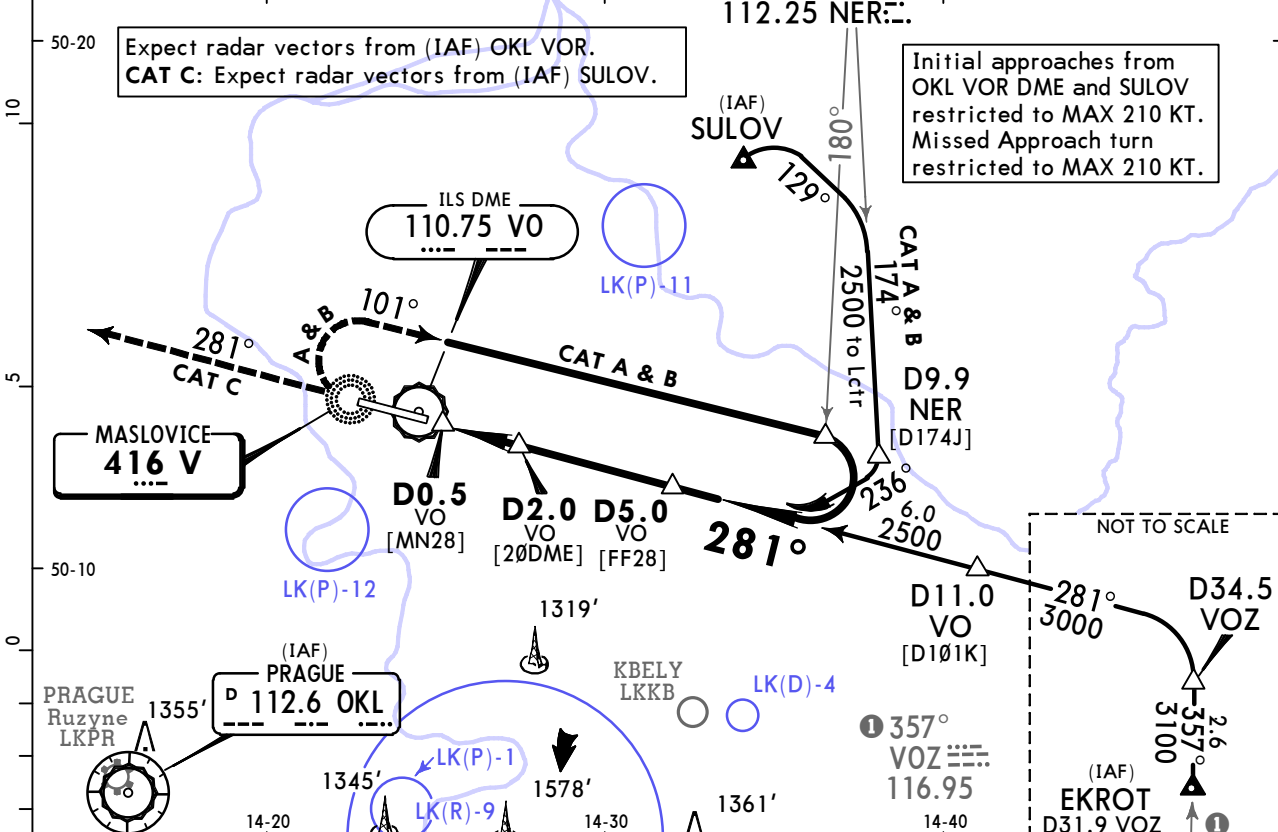
LKVO/VOD VODOCHODY

JEPPesen
15 NOV 19 **(26-2)** **CAT A, B & C**

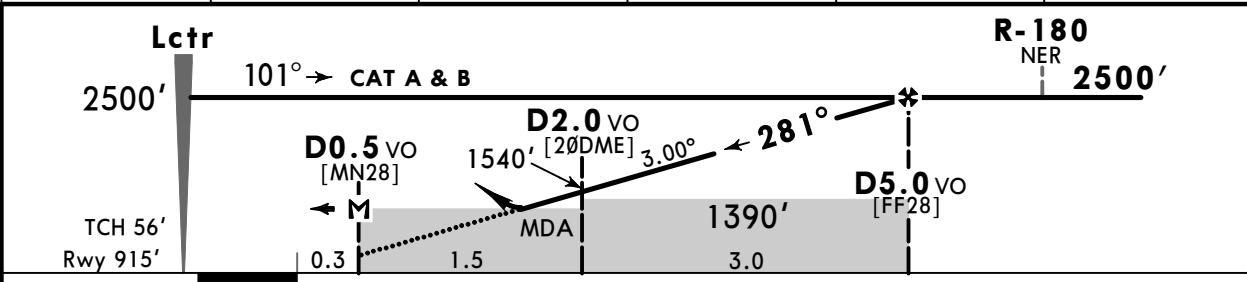
PRAGUE, CZECHIA NDB Rwy 28

VODOCHODY Radim (CTR/TMA status) 123.030		*VODOCHODY Radar (APP) 127.480		*VODOCHODY Tower 133.080	
Lctr V 416	Final Apch Crs 281°	D5.0 VO 2500' (1585')	DA/MDA(H) 1280' (365')	Apt Elev 919' Rwy 915'	<p>MSA V Lctr</p>
<p>MISSED APCH: CAT C: Climb on track 281° to 2500', expect radar vectors. CAT A & B: Climb on track 281° to Lctr, then turn RIGHT and continue on racetrack. Climb to 2500'. MISSED APCH WITH COMM FAILURE: Climb on track 281° to 2500'. Passing D5.0 VO turn RIGHT to Lctr.</p>					

DME required. Alt Set: hPa Rwy Elev: 33 hPa Trans level: By ATC Trans alt: 5000'



VO DME	1.0	2.0	3.0	4.0	5.0
ALTITUDE	1230'	1540'	1860'	2180'	2500'



Gnd speed-Kts	70	90	100	120	140	160	MIALS PAPI Refer to Missed Apch above
Descent angle 3.00°	372	478	531	637	743	849	
MAP at D0.5 VO							

PANS OPS	Standard STRAIGHT-IN LANDING RWY 28				CIRCLE-TO-LAND		
	CDFA				Not authorized South of airport		
	DA/MDA(H) 1280' (365')						
	ALS out				Max Kts	MDA(H)	VIS
	A	RVR 1300m	VIS 1800m	RVR 1500m	VIS 1800m	100	1330' (411')
B	RVR 1300m	VIS 1950m	RVR 1500m	VIS 1950m	135	1420' (501')	1600m
C	RVR 1400m	VIS 2100m	RVR 1700m	VIS 2100m	180	1520' (601')	2400m
D	NOT APPLICABLE				D	NOT APPLICABLE	

LKVO
VODOCHODY

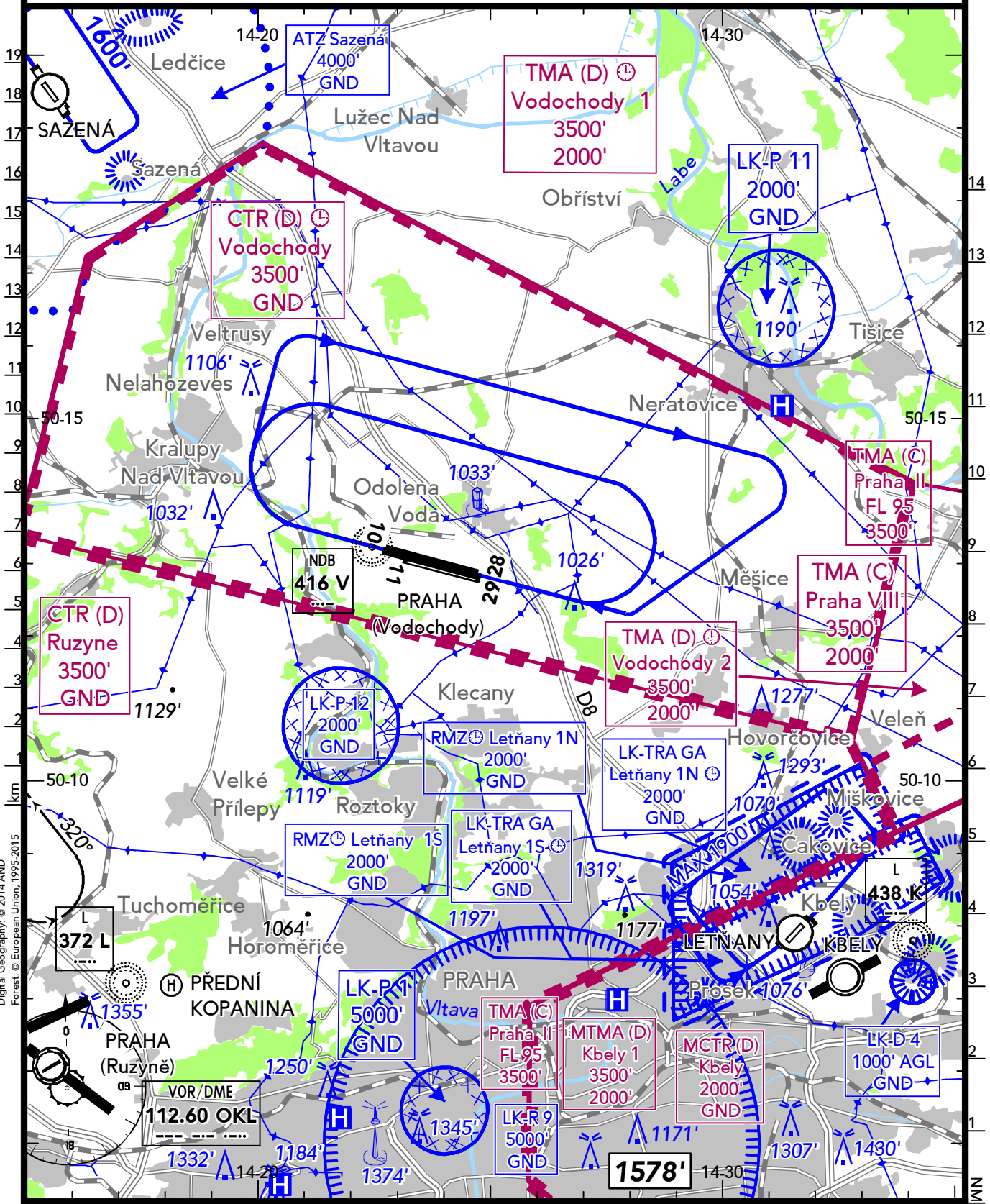
07 FEB 20 **(29-1)**

PRAHA
CZECHIA

VAR 4°E

BRIEFING STRIP™	LOCATION Elev 919' /280m N50 13.0 E014 23.7	FIS PRAHA INFORMATION 126.100	ATIS ATIS 123.030 ⁽¹⁾ (cz, en)
	AIRSPACE RUZYNE TOWER 134.560 ⁽²⁾ PRAHA RADAR 120.530 ⁽³⁾ 127.580 ⁽³⁾	APPROACH VODOCHODY RADAR 127.480 (cz, en)	
TOWER VODOCHODY TOWER 133.080 (cz, en)			

(1) Information about CTR/TMA status (2) Ruzyně CTR (3) Praha TMA



Digital Geography: © 2014 AND
 Forest: © European Union, 1995-2015

LKVO
VODOCHODY

07 FEB 20 **(29-2)**

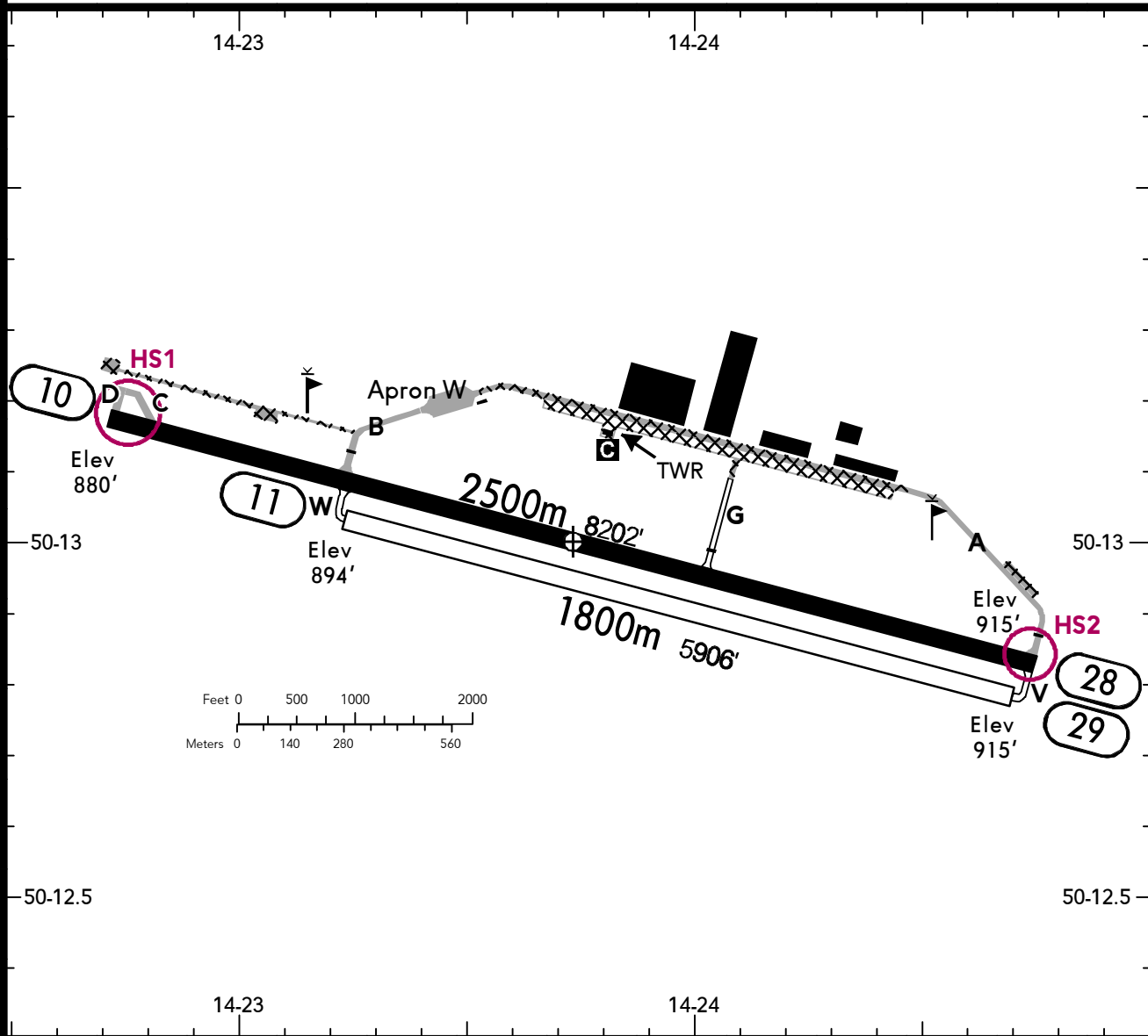
PRAHA
CZECHIA

BRIEFING STRIP™


LOCATION Elev 919' /280m N50 13.0 E014 23.7	ATIS ATIS 123.030 ⁽¹⁾ (cz, en)	TOWER VODOCHODY TOWER 133.080 (cz, en)
--	---	--

ADMITTED AIRCRAFT


⁽¹⁾ Information about CTR/TMA status



ALS 28 - PAPI 10/28 - THRL 10/28 - RL 10/28 - TWYL (B, C, D) - APRON - WDI - OBSTL.

RWY No	Dimension (m) - Surface	TORA (m)	LDA (m)	Strength	Lights
10 (101°) 28 (281°)	2500 x 45 Asphalt	2500	2500	PCN 22/F/B/X/T	
11 (101°) 29 (281°)	1800 x 50 Grass	1800	1800		---

Birds in vicinity of AD.

Intersection TKOF

RWY	TWY	TORA (m)
10	B	1900
	G	880
28	B	600
	G	1620

Guidance and parking of ACFT is provided according to instruction of ground staff and/or ATC instructions.

When LDG on / DEP from RWY 10/28 no ACFT shall be on TWY V or TWY W.

Grass RWY 11/29 shall not be used at night.

It is prohibited to use RWY 11/29 for IFR flights.

Simultaneous use not allowed for LDG/TKOF from RWY 10/28 and RWY 11/29.

It is possible to issue a clearance for LDG/TKOF from RWY 11/29 when RWY 10/28 is occupied and reversely.

After landing on RWY 11/29 the pilot is obliged to remain

LKVO

VODOCHODY

13 DEC 19

29-3

PRAHA
CZECHIA

on the RWY until cleared to enter TWY V or TWY W.

Due to flight tests at the AD, the pilots carrying out planned flight into areas of ATS Vodochody responsibility or to/ from the AD must take into consideration possible delay according to ATS instructions. TWR can at any time order interruption of the flight or leaving CTR/TMA Vodochody respecting flight test needs.

VFR Flights

RWY 28, RWY 29 - traffic circuit to the right:

Carry out crosswind turn after passing village Chvateruby, continue between chemical production site (on the left side) and liquid gas tanks (on the right side). Carry out downwind turn after passing liquid gas tanks (on the right side) to downwind N of town Odolena Voda. Carry out base turn in front of village Predboj, carry out final turn between villages Bast and Panenské Brezany.

RWY 10, RWY 11 - traffic circuit to the left:

Carry out crosswind turn in front of village Bast to downwind turn abeam village Predboj to downwind N of town Odolena Voda. Carry out base turn after passing village Uzice between chemical production site (on the right side) and liquid gas tanks (on the left side). Carry out final turn after passing village Chvateruby (on the left side).

VFR traffic circuit for ACFT with wingspan < 36m (only right traffic circuit from RWY 28, this traffic circuit is only for training flights):

Carry out crosswind turn after passing village Chvateruby continue between chemical production site (on the left side) and liquid gas tanks (on the right side). Carry out downwind turn after passing village Uzice (on the right side). Carry out base turn after passing village Kojetice (on the right side), continue W of villages Cakovicky and Zlonin. Abeam village Zlonin descend to 2000' to final turn between villages Bast and Panenské Brezany.

Noise Abatement Procedures

TKOFs and LDGs are without restriction. In case when usage of both RWY 10 and 28 is possible the RWY 28 is preferred.

For reason of noise abatement overflights of build-up areas of all villages in vicinity of AD below 2000' are prohibited. Avoid repeated turning in the same area during flight.

During VFR DEP crosswind turn after TKOF is permitted after reaching 2000'. Avoid direct overflight of housing estate.

ACFT carrying out VFR ARR/visual APCH to RWY 10/28 or RWY 11/29 is not allowed to descend below 2000' before interception of extended RWY axis.

If ATC Vodochody do not specify otherwise from operational reasons, traffic circuits are carried out N from RWY: RWY 28, RWY 29- RH, RWY 10, RWY 11- LH.

During flight through CTR Vodochody in time of CTR Vodochody activation a flight ALT shall be at least 2000'. If not specified otherwise by ATC unit, pilots of powered ACFT are requested to avoid build-up area of all villages in vicinity of AD.

In time when CTR Vodochody is not activated, area of CTR

Vodochody is changed to G class airspace. Nevertheless pilots are requested for strict observance of way of carrying out the flight as if CTR Vodochody is activated.

School and training flights on traffic circuit shall be carried out outside build-up area of all villages in vicinity of AD. From 2200 LMT to 0600 LMT these flights are not allowed.

Procedures should be different from procedures specified above in case of:

- need of ensuring flight safety,
- flights associated with production program of company AERO Vodochody a.s.,
- flights for SAR purposes,
- flights of Civil Aviation Authority ACFT conducting a state supervision,
- flights of ACFT in service of Police CR during performance of tasks,
- flights for rescue of human life,
- humanitarian flights in case of risk of delay.

Training Flights

Due to flight tests at the AD the training flights must take into consideration possible delay according to ATS instructions. TWR can at any time delay, interrupt or terminate a training flight within CTR/TMA Vodochody respecting flight test needs.

Chart changes since cycle 23-2021

ADD = added chart, REV = revised chart, DEL = deleted chart.

ACT	PROCEDURE IDENT	INDEX	REV DATE	EFF DATE
-----	-----------------	-------	----------	----------

PRAGUE, (VODOCHODY - LKVO)

TERMINAL CHART CHANGE NOTICES

Chart Change Notices for Airport LKVO

Type: Terminal

Effectivity: Permanent

Begin Date: Immediately

End Date: No end date

IATA code is VOD.

SUDU..PONPA..PTA..GBE..DIL..VIE..SAVT