

General Information

Location: SAN JOSE CRI
ICAO/IATA: MROC / SJO
Lat/Long: N09° 59.63', W084° 12.53'
Elevation: 3048 ft

Airport Use: Public
Daylight Savings: Not Observed
UTC Conversion: +6:00 = UTC
Magnetic Variation: 2.0° W

Fuel Types: 100-130 Octane, Jet A-1
Customs: Yes
Airport Type: IFR
Landing Fee: No
Control Tower: Yes
Jet Start Unit: No
LLWS Alert: No
Beacon: Yes

Sunrise: 1156 Z
Sunset: 2346 Z

Runway Information

Runway: 07
Length x Width: 9879 ft x 148 ft
Surface Type: asphalt
TDZ-Elev: 2940 ft
Lighting: Edge, ALS, REIL

Runway: 25
Length x Width: 9879 ft x 148 ft
Surface Type: asphalt
TDZ-Elev: 3027 ft
Lighting: Edge
Displaced Threshold: 1621 ft
Stopway: 197 ft

Communication Information

ATIS: 127.675
Coco Tower: 118.600
Coco Ground: 121.900
Coco Clearance Delivery: 121.300
Coco Clearance Delivery: 121.900 Secondary
Coco Approach: 129.500 Secondary
Coco Approach: 120.500

Coco ACC: 128.900 Secondary RCO

Coco ACC: 119.600 RCO

Coco Radio: 126.800

MROC/SJO



SAN JOSE, COSTA RICA

JUAN SANTAMARIA INTL

17 JAN 14

10-1R

RADAR MINIMUM ALTITUDES

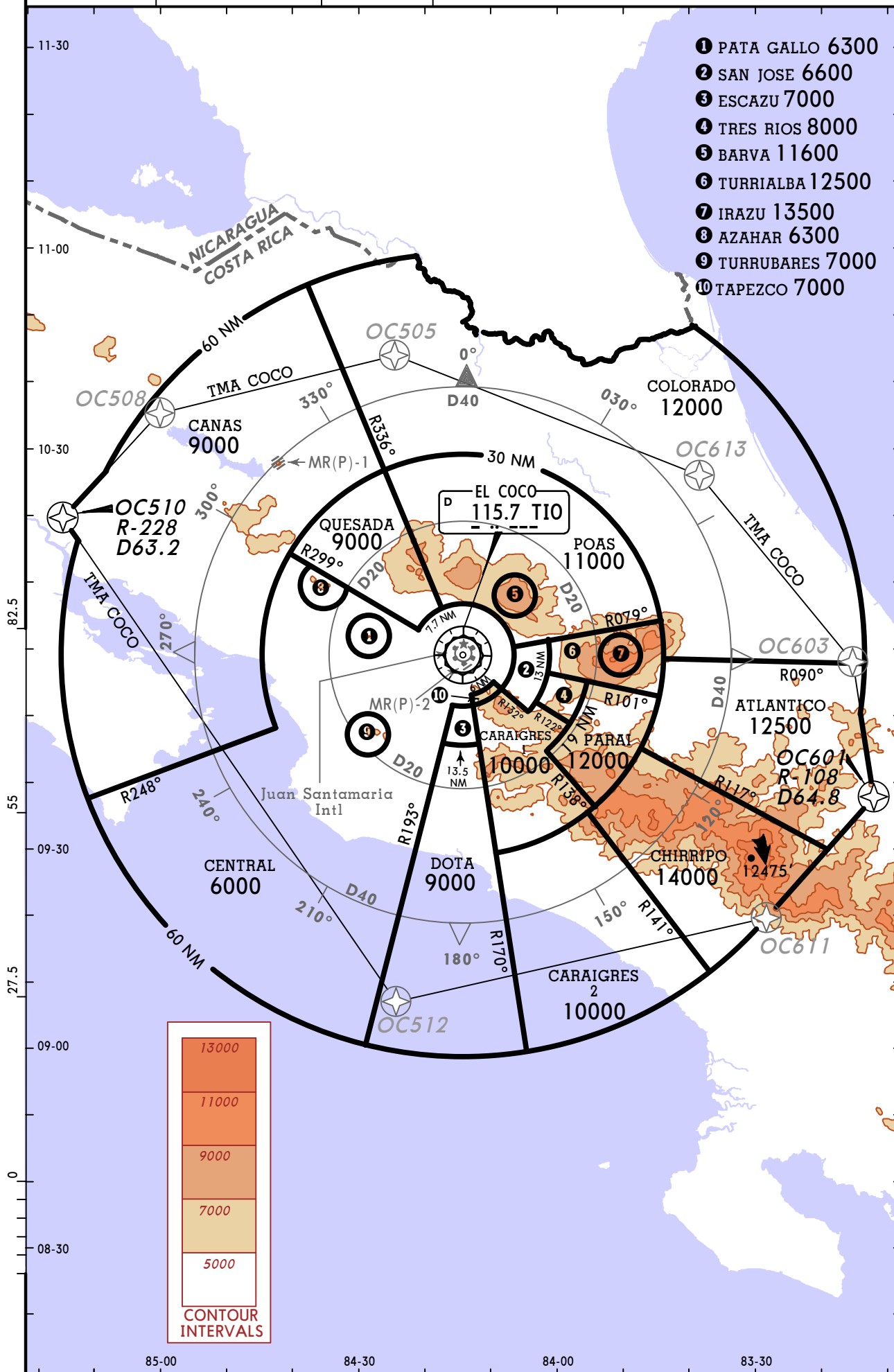
COCO Center (R)
119.6

*COCO Approach (R)
120.5

Apt Elev
3021'

Alt Set: hPa (IN on req)
Trans level: FL 200 Trans alt: 19000'

- ① PATA GALLO 6300
- ② SAN JOSE 6600
- ③ ESCAZU 7000
- ④ TRES RIOS 8000
- ⑤ BARVA 11600
- ⑥ TURRIALBA 12500
- ⑦ IRAZU 13500
- ⑧ AZAHAR 6300
- ⑨ TURRUBARES 7000
- ⑩ TAPEZCO 7000

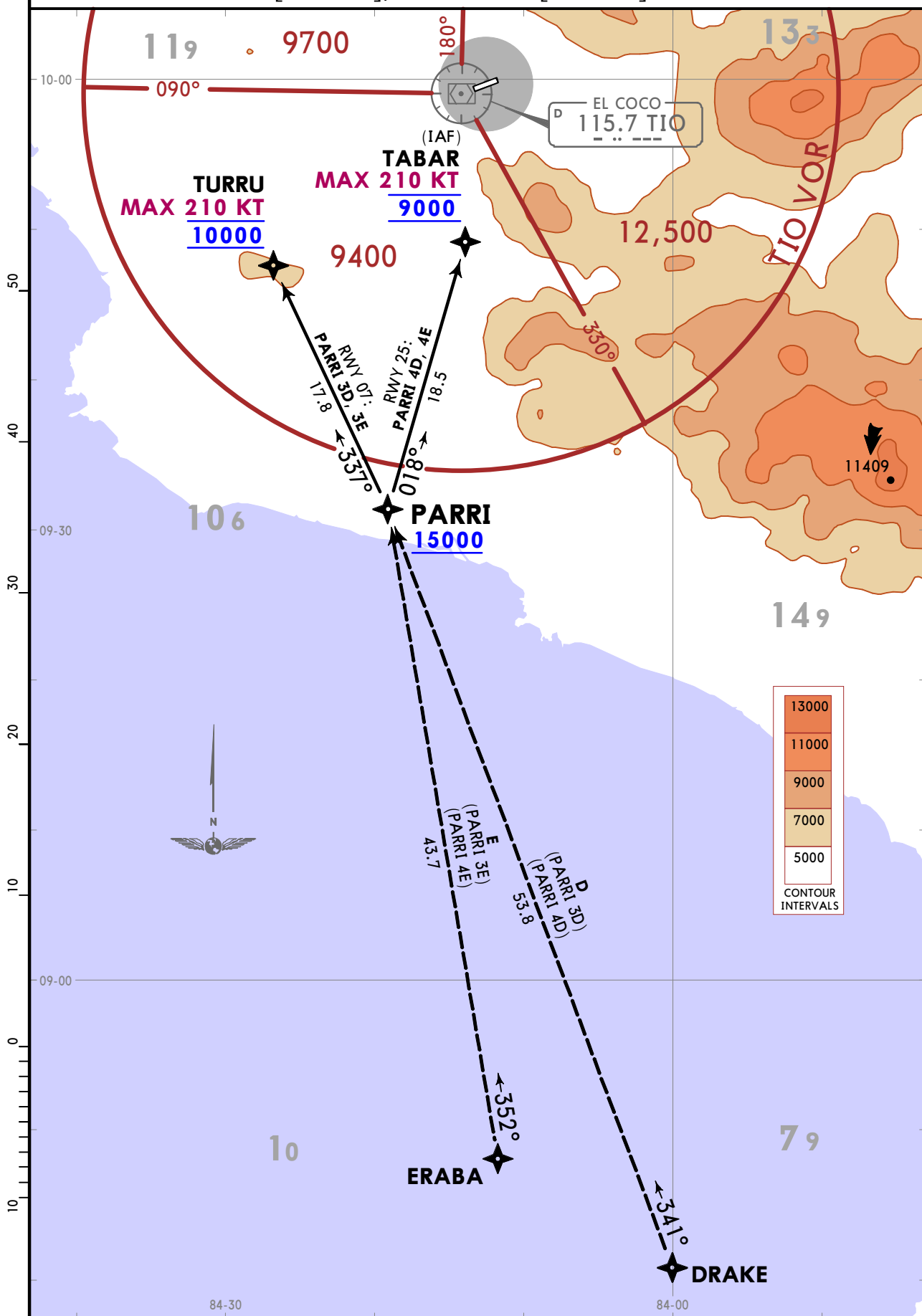


MROC/SJO
(ALAJUELA) JUAN
SANTAMARIA INTL

JEPPESSEN SAN JOSE, COSTA RICA
8 JAN 21 **10-2B** **RNAV STAR**

D-ATIS 127.675	Apt Elev 3048	Alt Set: hPa (IN on req) Trans level: FL200 1. GNSS. 2. RNAV 1.
--------------------------	-------------------------	---

**PARRI 3D [PARI3D], PARRI 4D [PARI4D]
PARRI 3E [PARI3E], PARRI 4E [PARI4E] RNAV ARRIVALS**



CHANGES: D-ATIS established.

© JEPPESSEN, 2018, 2021. ALL RIGHTS RESERVED.

MROC/SJO
 (ALAJUELA) JUAN
 SANTAMARIA INTL

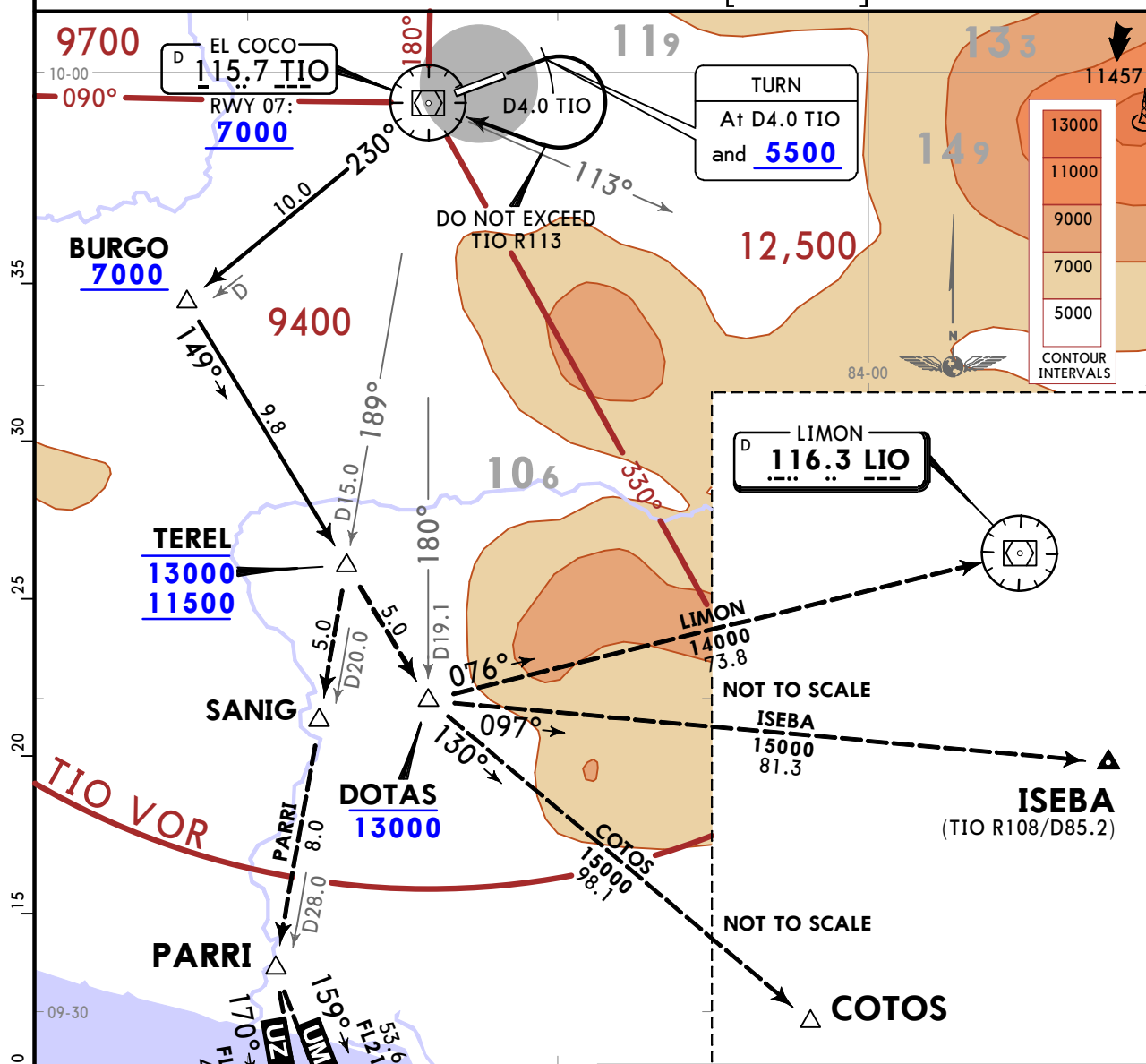
JEPPESEN
 30 OCT 20 **10-3**

SAN JOSE, COSTA RICA

SID

*COCO Departure (R) 120.5	Apt Elev 3048	Trans alt: 19000
--	-------------------------	------------------

ATENAS 4 DEPARTURE [ATENA4]



This SID requires a minimum climb gradient of 400 per NM.

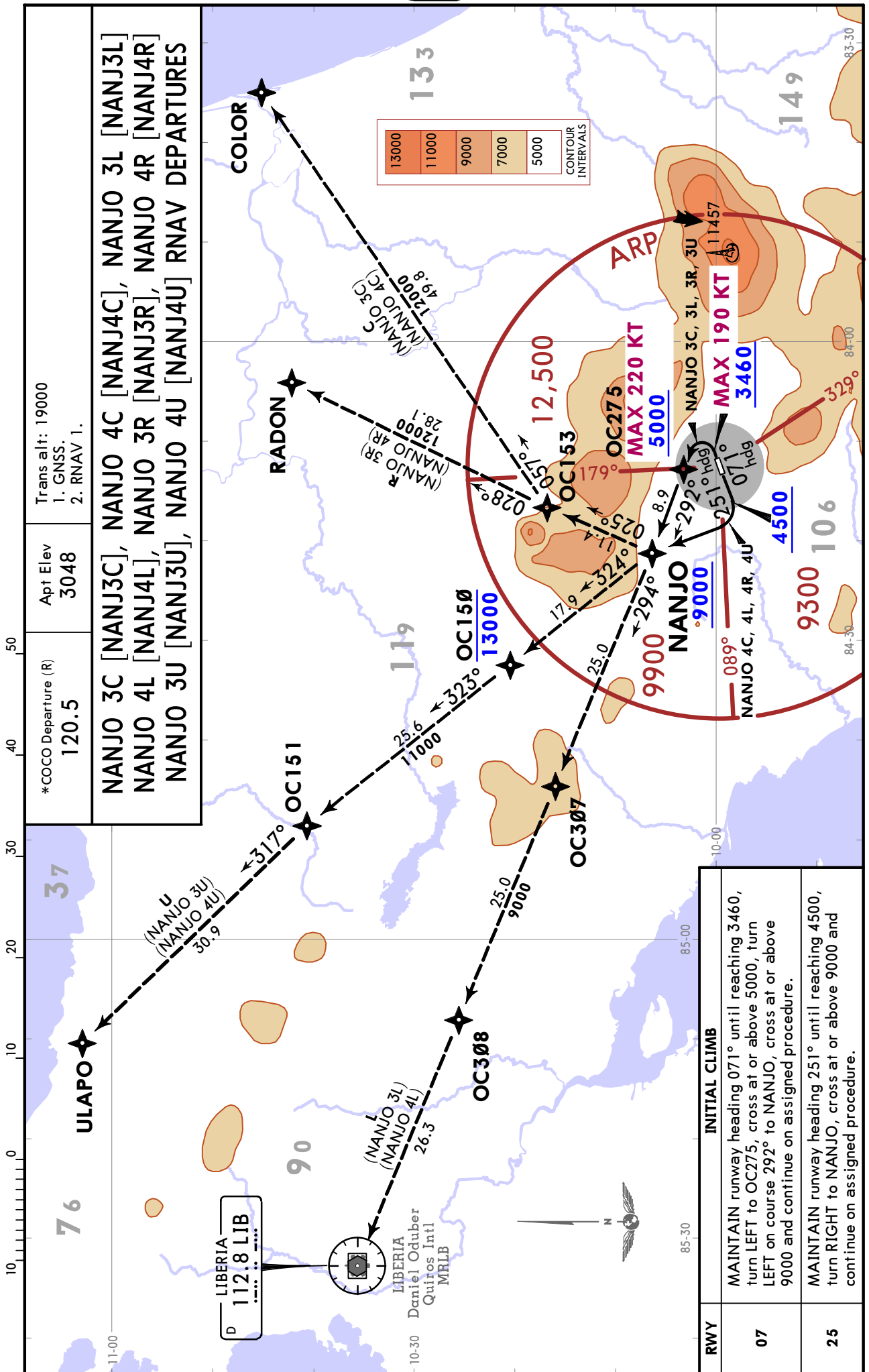
Gnd speed-KT	75	100	150	200	250	300
400 per NM	500	667	1000	1333	1667	2000

RWY	INITIAL CLIMB
07	MAINTAIN runway heading with the maximum climb gradient possible to D4.0 TIO and 5500, then climbing RIGHT turn to TIO VOR without exceeding TIO R113. Continue with departure procedure.
25	Direct to TIO VOR Continue with departure procedure.
ROUTING	
Climb on TIO R230 to BURGO, cross at or above 7000, then turn LEFT course 149° to TEREL and continue on the assigned transition.	
TRANSITIONS	
COTOS (A/UA-502)	Over TEREL continue on course 149° to DOTAS, then turn LEFT course 130° to COTOS.
ISEBA (G/UG-440)	Over TEREL continue on course 149° to DOTAS, then turn LEFT course 097° to ISEBA.
LIMON (B/UB-690)	Over TEREL continue on course 149° to DOTAS, then turn LEFT course 076° to LIO VOR.
PARRI (B/UB-767)	Over TEREL turn RIGHT on TIO R189 to PARRI. UM-659 (RNAV): Over PARRI continue track 159° to DRAKE. UZ-593 (RNAV): Over PARRI continue track 170° to ERABA.

MROC/SJO
 (ALAJUELA) JUAN
 SANTAMARIA INTL

JEPPESSEN
 10 JUL 20 **10-3C** Eff 16 Jul

SAN JOSE, COSTA RICA
RNAV SID



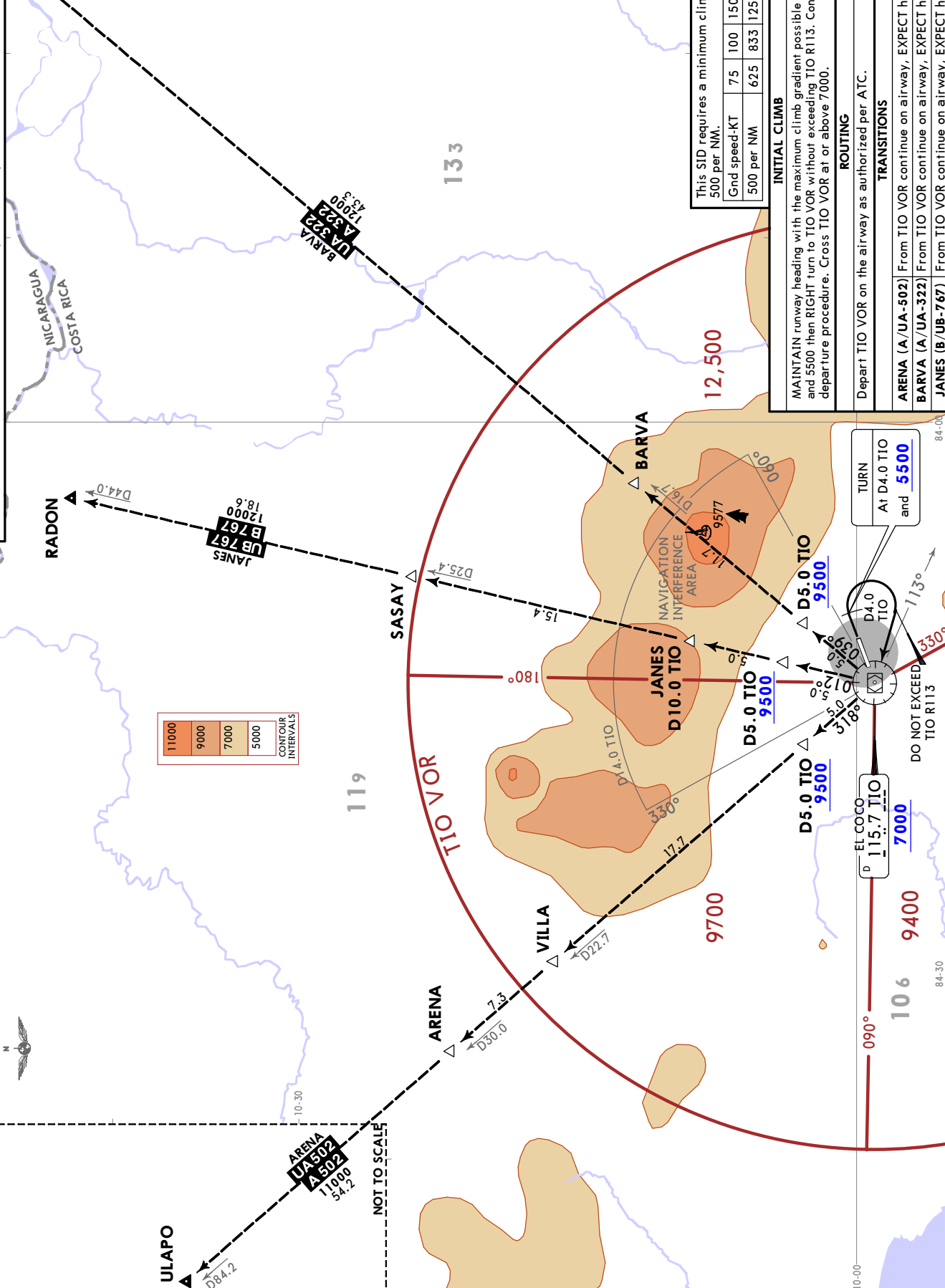
CHANGES: Procedures renumbered, bearings.

MROC/SJO (ALAJUELA) JUAN SANTAMARIA INTL **JEPPESSEN** SAN JOSE, COSTA RICA **SID**

15 DEC 17 10-3E

Apt Elev 3028
 *COCO Departure (R) 120.5
 Trans alt: 19000
 RADAR required.

POAS 4 DEPARTURE [POAS4]
 (RWY 07)

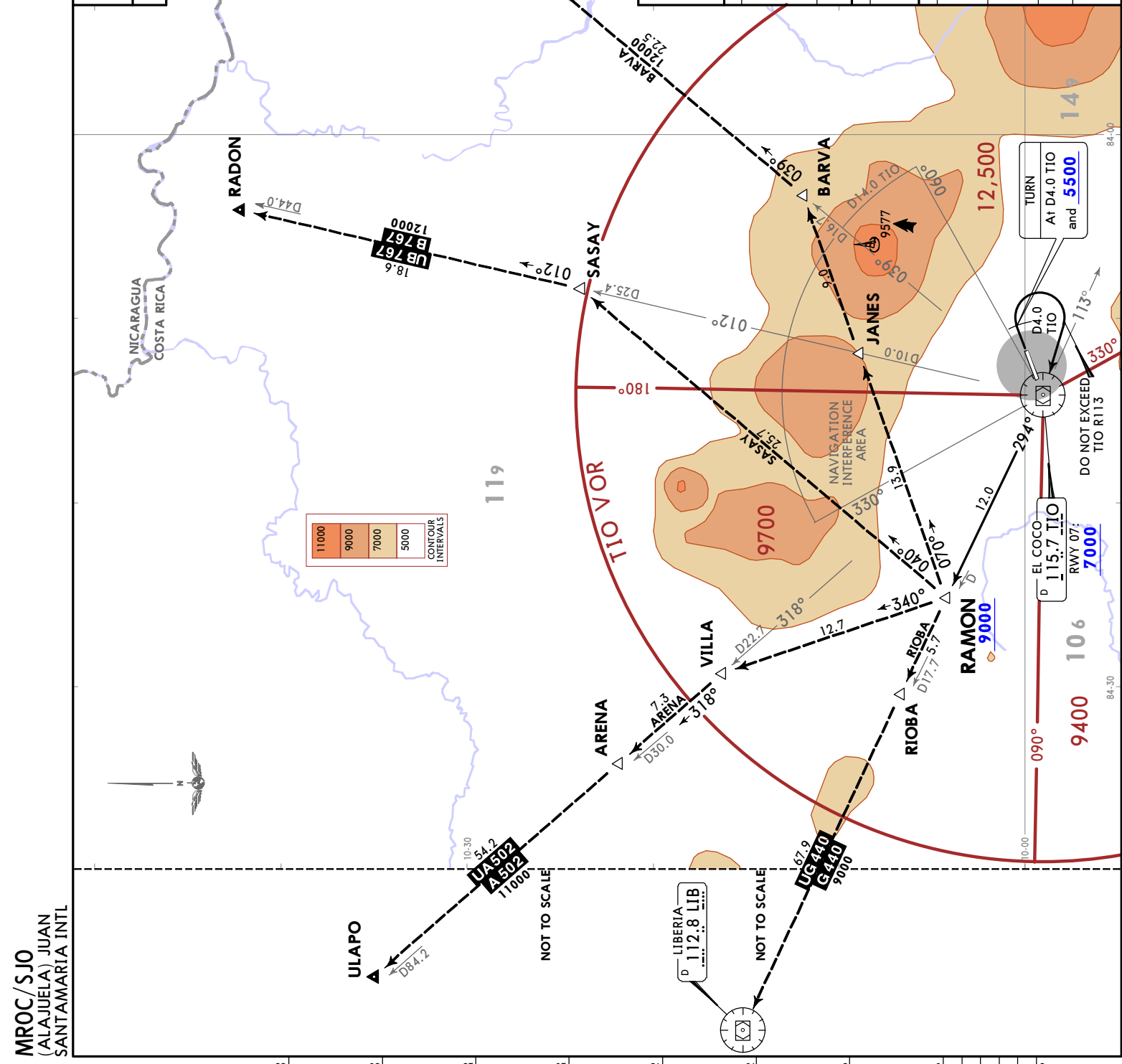
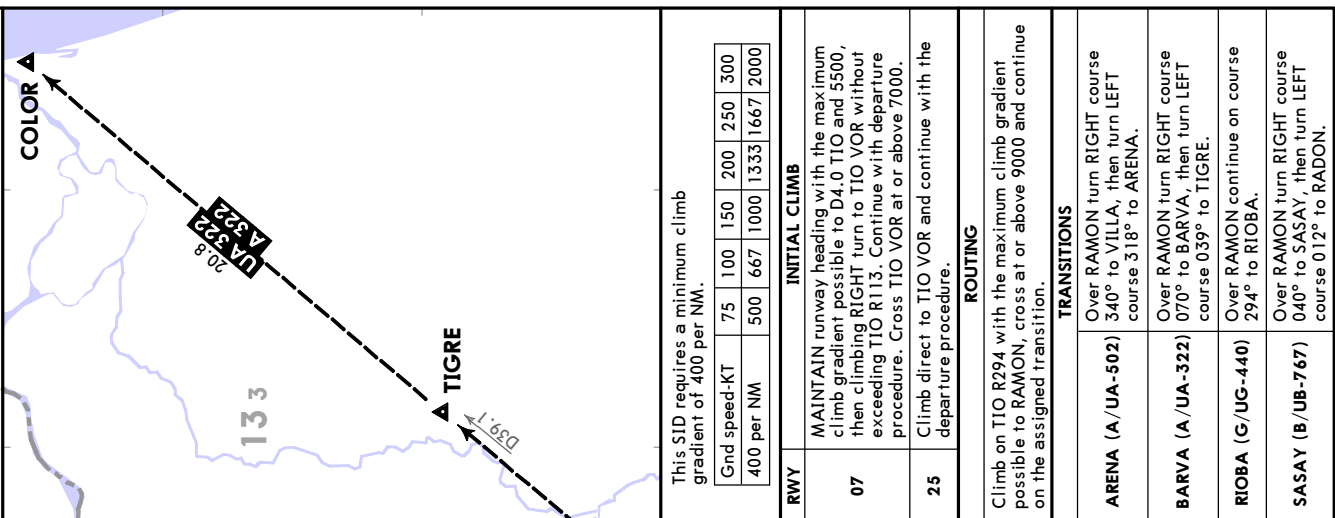


CONTOUR INTERVALS

11000
9000
7000
5000

JEPPESEN
 10 JUL 20 (10-3F) E16 Jul
 SAN JOSE
 COSTA RICA

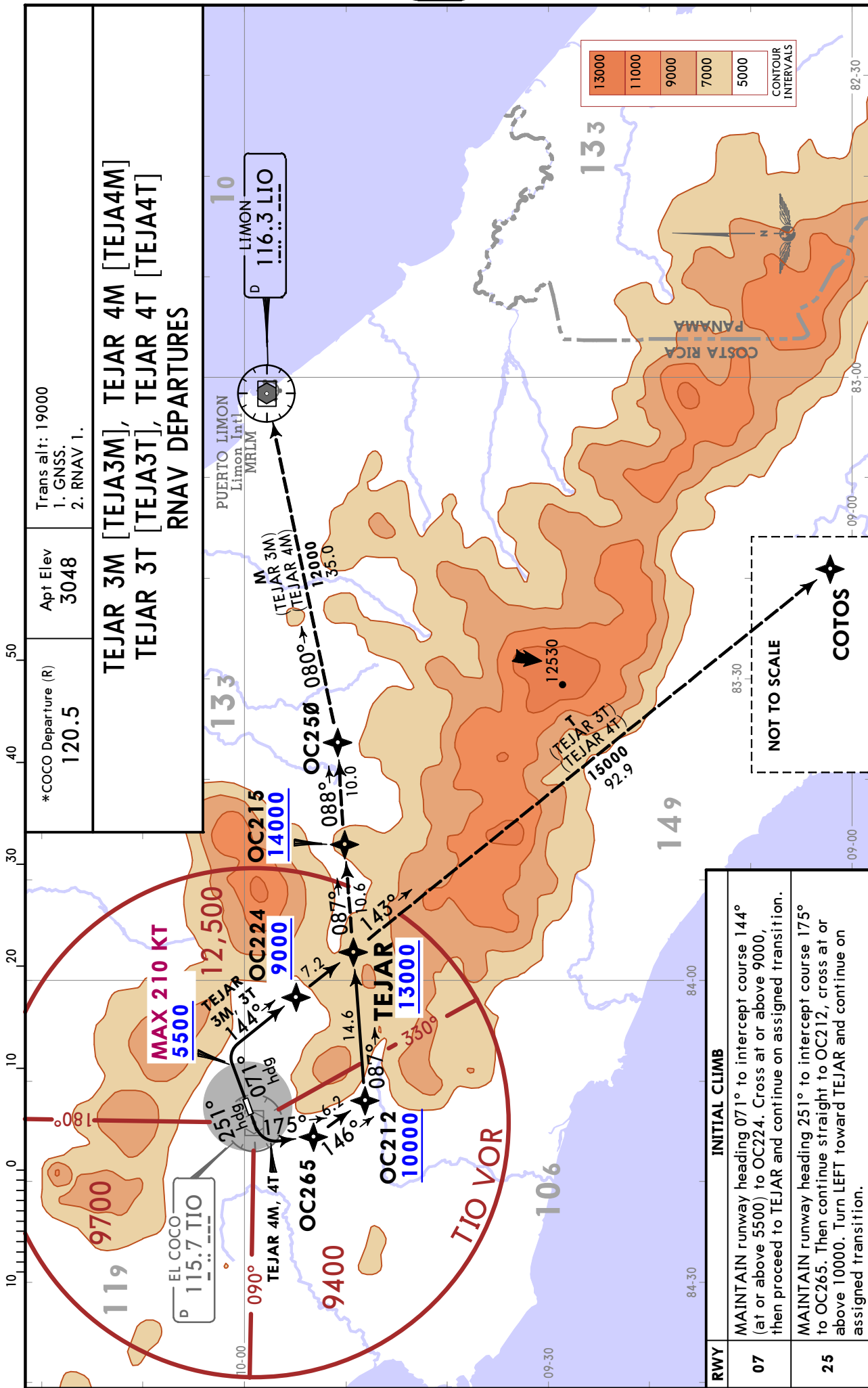
*COCO
 Departure (R)
 120.5
 Trans alt: 19000
 Apt Elev
 3048
RAMON 4 DEPARTURE [RAMON4]
COLOR ▲



MROC/SJO
 (ALAJUELA) JUAN
 SANTAMARIA INTL

MROC/SJO
 (ALAJUELA) JUAN
 SANTAMARIA INTL

JEPPESSEN SAN JOSE, COSTA RICA
 10 JUL 20 **10-3G** Eff 16 Jul **RNAV SID**



Trans alt: 19000
 1. GNSS.
 2. RNAV 1.

Apt Elev
 3048

*COCO Departure (R)
 120.5

TEJAR 3M [TEJA3M], TEJAR 4M [TEJA4M]
TEJAR 3T [TEJA3T], TEJAR 4T [TEJA4T]
RNAV DEPARTURES

RWY	INITIAL CLIMB
07	MAINTAIN runway heading 071° to intercept course 144° (at or above 5500) to OC224. Cross at or above 9000, then proceed to TEJAR and continue on assigned transition.
25	MAINTAIN runway heading 251° to intercept course 175° to OC265. Then continue straight to OC212, cross at or above 10000. Turn LEFT toward TEJAR and continue on assigned transition.

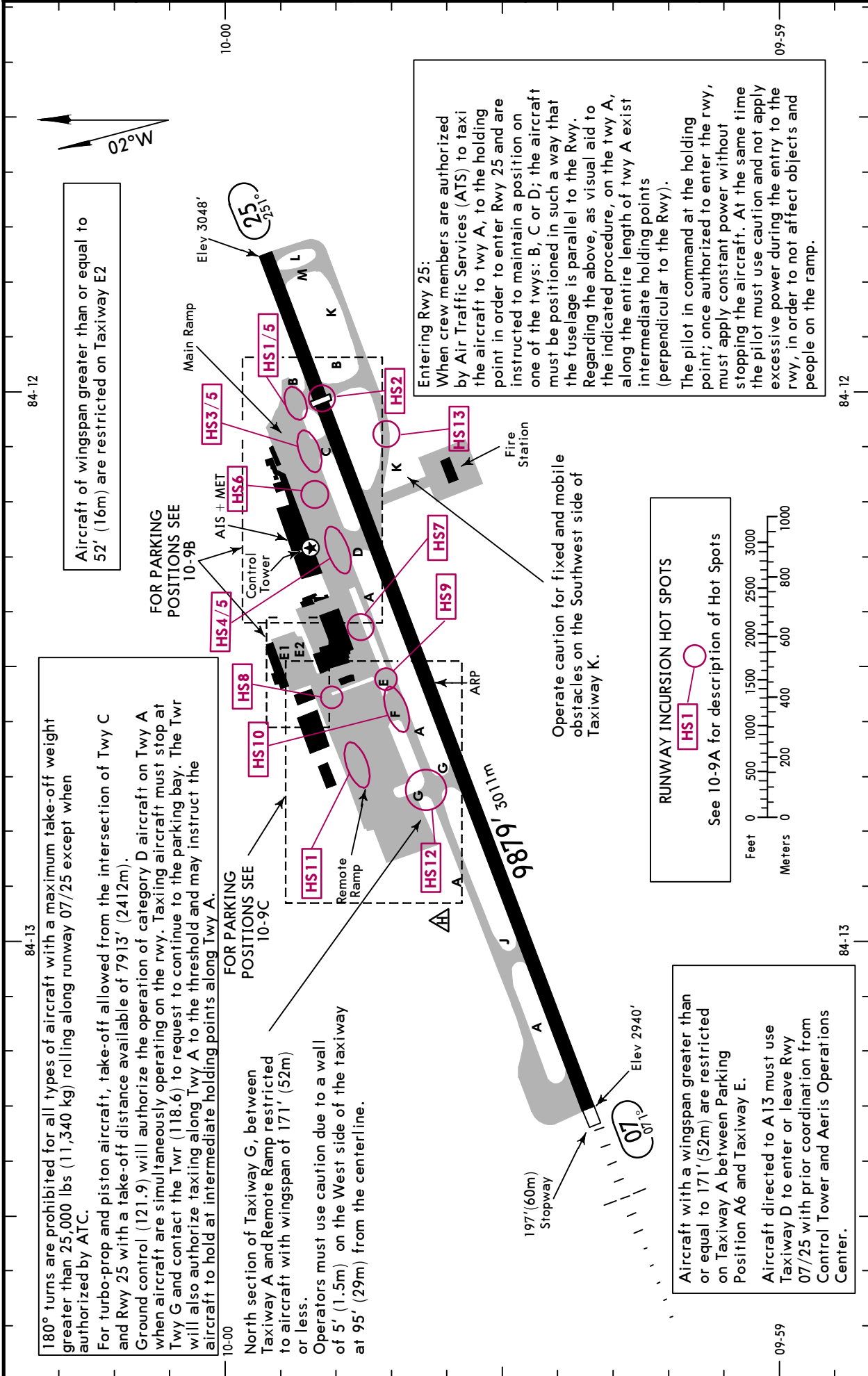
CHANGES: TEJAR 3B, TEJAR 4B, TEJAR 3I, TEJAR 4I removed, bearing.

MROC/SJO
 Apt Elev **3048'**
 N09 59.6 W084 12.5

JEPPesen
 6 AUG 21
 Eff 12 Aug **10-9**

SAN JOSE, COSTA RICA
 (ALAJUELA) JUAN SANTAMARIA INTL

ATIS	*COCO Clearance	COCO Ground	Tower	*COCO Departure (R)
127.675	121.3	121.9	118.6	120.5



180° turns are prohibited for all types of aircraft with a maximum take-off weight greater than 25,000 lbs (11,340 kg) rolling along runway 07/25 except when authorized by ATC.
 For turbo-prop and piston aircraft, take-off allowed from the intersection of Twy C and Rwy 25 with a take-off distance available of 7913' (2412m).
 Ground control (121.9) will authorize the operation of category D aircraft on Twy A when aircraft are simultaneously operating on the rwy. Taxiing aircraft must stop at Twy G and contact the Twr (118.6) to request to continue to the parking bay. The Twr will also authorize taxiing along Twy A to the threshold and may instruct the aircraft to hold at intermediate holding points along Twy A.

FOR PARKING POSITIONS SEE 10-9C
 North section of Taxiway G, between Taxiway A and Remote Ramp restricted to aircraft with wingspan of 171' (52m) or less.
 Operators must use caution due to a wall of 5' (1.5m) on the West side of the taxiway at 95' (29m) from the centerline.

FOR PARKING POSITIONS SEE 10-9B
 Aircraft of wingspan greater than or equal to 52' (16m) are restricted on Taxiway E2

Entering Rwy 25:
 When crew members are authorized by Air Traffic Services (ATS) to taxi the aircraft to twy A, to the holding point in order to enter Rwy 25 and are instructed to maintain a position on one of the twys: B, C or D; the aircraft must be positioned in such a way that the fuselage is parallel to the Rwy. Regarding the above, as visual aid to the indicated procedure, on the twy A, along the entire length of twy A exist intermediate holding points (perpendicular to the Rwy).
 The pilot in command at the holding point; once authorized to enter the rwy, must apply constant power without stopping the aircraft. At the same time the pilot must use caution and not apply excessive power during the entry to the rwy, in order to not affect objects and people on the ramp.

Operate caution for fixed and mobile obstacles on the Southwest side of Taxiway K.

RUNWAY INCURSION HOT SPOTS
 See 10-9A for description of Hot Spots

Aircraft with a wingspan greater than or equal to 171' (52m) are restricted on Taxiway A between Parking Position A6 and Taxiway E.
 Aircraft directed to A13 must use Taxiway D to enter or leave Rwy 07/25 with prior coordination from Control Tower and Aeris Operations Center.

MROC/SJO

6 AUG 21
Eff 12 Aug **JEPPESEN**
10-9A

SAN JOSE, COSTA RICA
(ALAJUELA) JUAN SANTAMARIA INTL

GENERAL

Birds in vicinity of airport.

ADDITIONAL RUNWAY INFORMATION

RWY		USABLE LENGTHS		
		Threshold	Glide Slope	TAKE-OFF
07 25	HIRL MALSR REIL PAPI-L (angle 3.0°)		8958' 2730m	
	HIRL ① PAPI-L (angle 3.5°)	8258' 2517m		

① Do not use beyond 6.7 NM from displaced threshold.

RUNWAY INCURSION HOT SPOTS



- HS1** Risk of collision between aircraft taxiing on Twy A with aircraft exiting the Rwy on Twy B.
- HS2** Risk of collision between aircraft taking off or landing with aircraft crossing the Rwy along Twy B.
- HS3** Risk of collision between aircraft taxiing on Twy A and aircraft exiting the Rwy on Twy C.
- HS4** Risk of collision between aircraft taxiing on Twy A with aircraft leaving from Twy D.
- HS5** Special attention is recommended for aircraft taking off and landing with aircraft leaving from Twy B, Twy C, and Twy D while waiting for signallers for entry to parking positions and part of the fuselage on the track.
- HS6** Risk of collision of aircraft taxiing on Twy A with vehicles transiting North of Main Apron, distance between taxiway and vehicles below recommended by rule.
- HS7** Risk of collision of aircraft taxiing on Twy A with aircraft and scaffolding in front of COOPESA Apron.
- HS8** Risk of collision between aircraft taxiing on Twy E where Twy E1 and Twy E2 intersect. Area not visible from control tower.
- HS9** Risk of collision between aircraft taxiing on Twy E and Twy A, with aircraft departing from the Remote Apron on Twy F. Risk with vehicles crossing Twy E from and to the Main Apron as well as people crossing. Area not visible from control tower.
- HS10** Risk of collision between aircraft taxiing on Twy A with aircraft departing from the Remote Apron on Twy F. Risk with vehicles crossing Twy F, as well as people crossing. Area not visible from the control tower.
- HS11** Risk of collision between aircraft taxiing inside Remote Apron, from and to the parking platforms. Area not visible by Control Tower.
- HS12** Risk of collision between aircraft taxiing on Twy A with aircraft leaving the runway on Twy G. Aircraft taxiing to THR of Rwy 07 via Twy G North side. Risk with vehicles crossing Twy G North side, as well as people crossing. The latter not visible from control tower.
- HS13** Risk of collision between aircraft running along Twy K, South West side, with vehicles traveling along the perimeter and/or obstacles placed in the fringe. The distance between Twy and objects is less than the norm recommended for the operation of code aircraft D and E.

TAKE-OFF **CEILING REQUIRED**

Rwy 07				
	ILS DME Full	RAIL ALS Inoperative	GS Inoperative	ILS Inoperative (VOR or RNP available)
1 & 2 Eng 3 & 4 Eng	800' - 800m	800' - 1200m	800' - 2000m	800' - 2800m

Rwy 25						
With defined post take-off alternative airport or with meteorological conditions that allow landing on Runway 07				With alternative airport post take-off undefined and without conditions that allow landing on Runway 07		
	ILS DME Full	RAIL ALS Inoperative	GS Inoperative	ILS Inoperative (VOR or RNP available)	With RNP Apch Capacity	Without RNP Apch Capacity
1 & 2 Eng 3 & 4 Eng	200' - 800m	200' - 1200m	400' - 2000m	300' - 2800m	600' - 2800m	Sunset to Sunrise only 1500' - 5000m

ILS and VOR/DME Failure		
Rwy 07	Rwy 25	
RNP Apch capacity required or approved alternate		
1 & 2 Eng 3 & 4 Eng	800' - 2800m	600' - 2800m

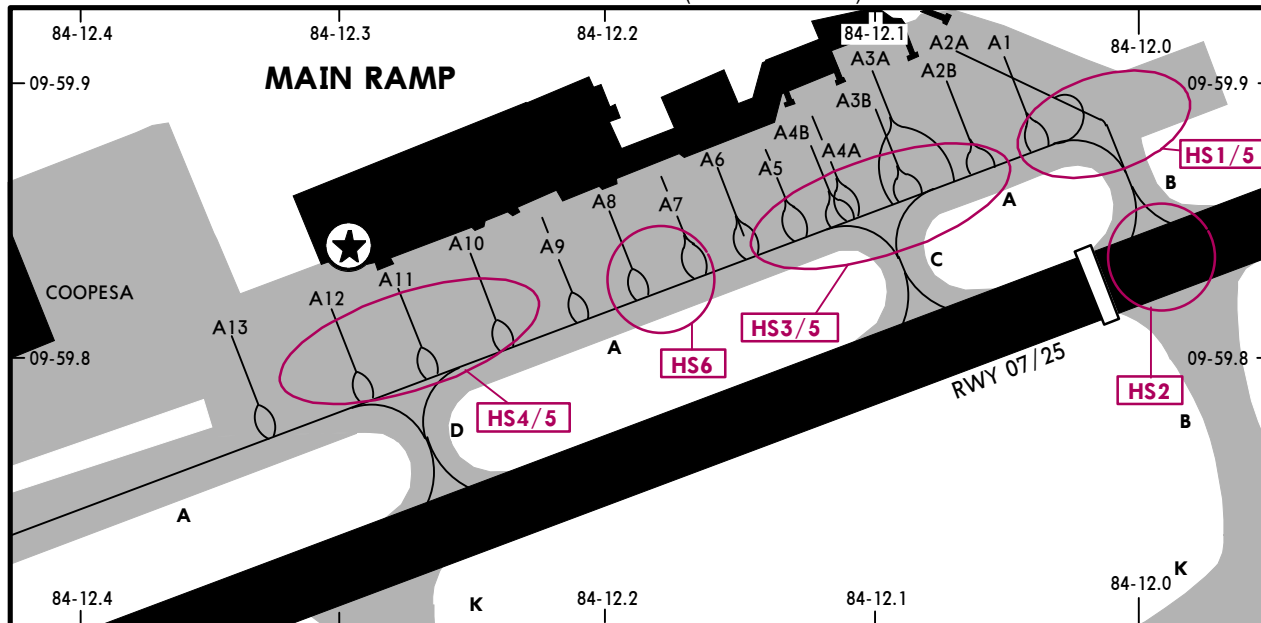
-1&2 engine acft post take-off alternate should be within one hour. - 3 or more engine acft post take-off alternate should be within two hours. - Conditions: at cruising speed with an engine inoperative in a stable atmosphere and calm winds.

MROC/SJO

JEPPESEN

SAN JOSE, COSTA RICA
(ALAJUELA) JUAN SANTAMARIA INTL

6 AUG 21
Eff 12 Aug 10-9B



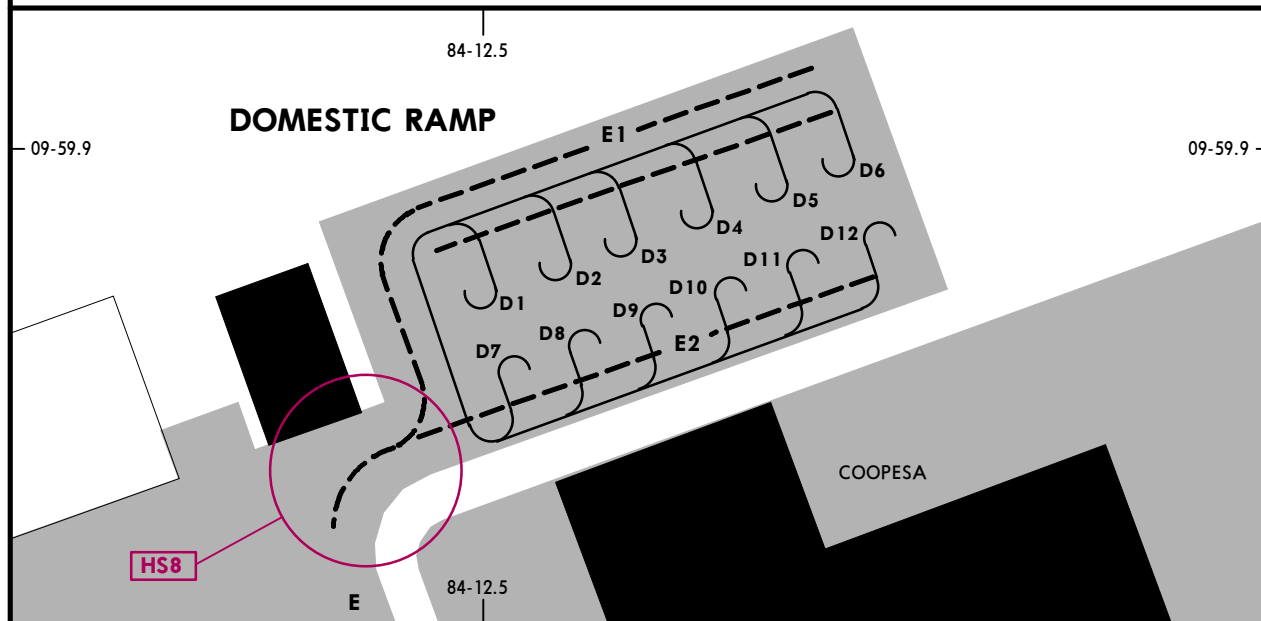
PARKING STAND COORDINATES

STAND No.	COORDINATES
A1 thru A5	N09 59.9 W084 12.1
A6 thru A8	N09 59.9 W084 12.2
A9	N09 59.8 W084 12.2
A10 thru A13	N09 59.8 W084 12.3

RUNWAY INCURSION HOT SPOTS



See 10-9A for description of Hot Spots



PARKING STAND COORDINATES

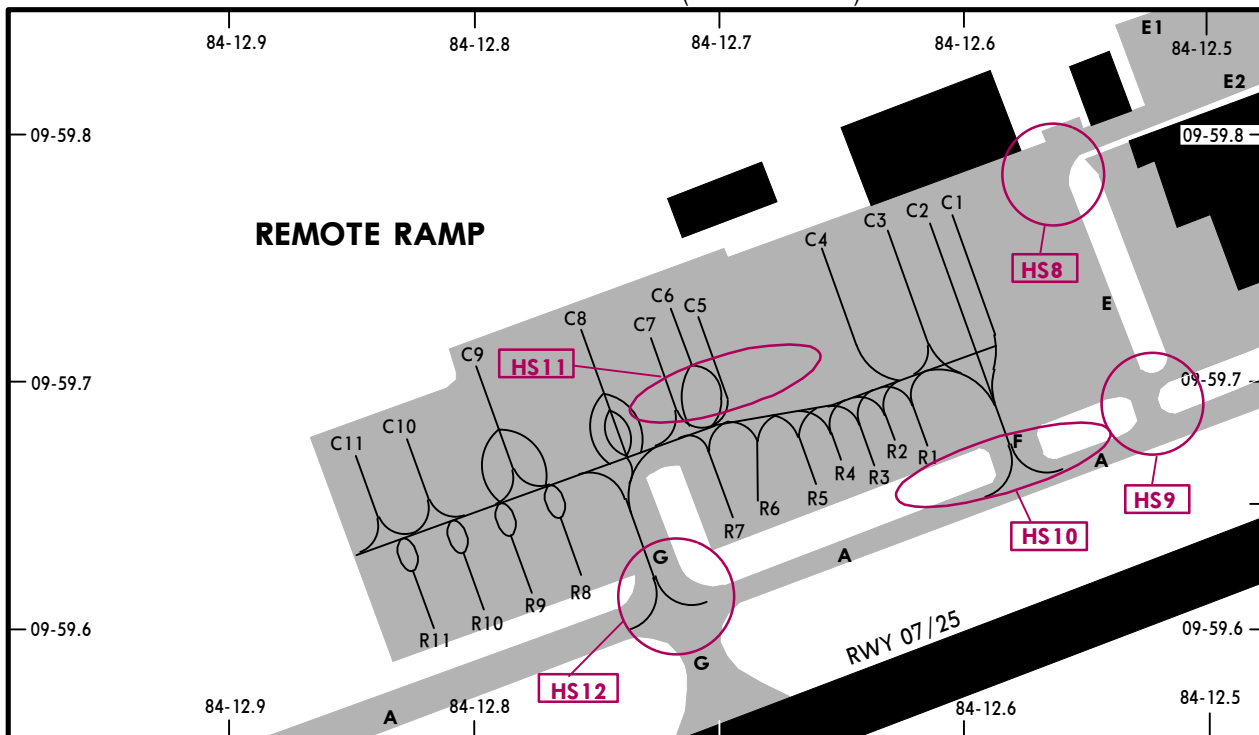
STAND No.	COORDINATES
D1 thru D6	N09 59.9 W084 12.5
D7	N09 59.8 W084 12.5
D8 thru D11	N09 59.9 W084 12.5
D12	N09 59.9 W084 12.4

MROC/SJO

JEPPESEN

SAN JOSE, COSTA RICA
(ALAJUELA) JUAN SANTAMARIA INTL

6 AUG 21
Eff 12 Aug 10-9C



PARKING STAND COORDINATES

STAND No.	COORDINATES
C1 thru C4	N09 59.8 W084 12.6
C5 thru C8	N09 59.8 W084 12.7
C9 thru C11	N09 59.7 W084 12.8
R1 thru R5	N09 59.7 W084 12.6
R6, R7	N09 59.7 W084 12.7
R8	N09 59.6 W084 12.7
R9 thru R11	N09 59.6 W084 12.8

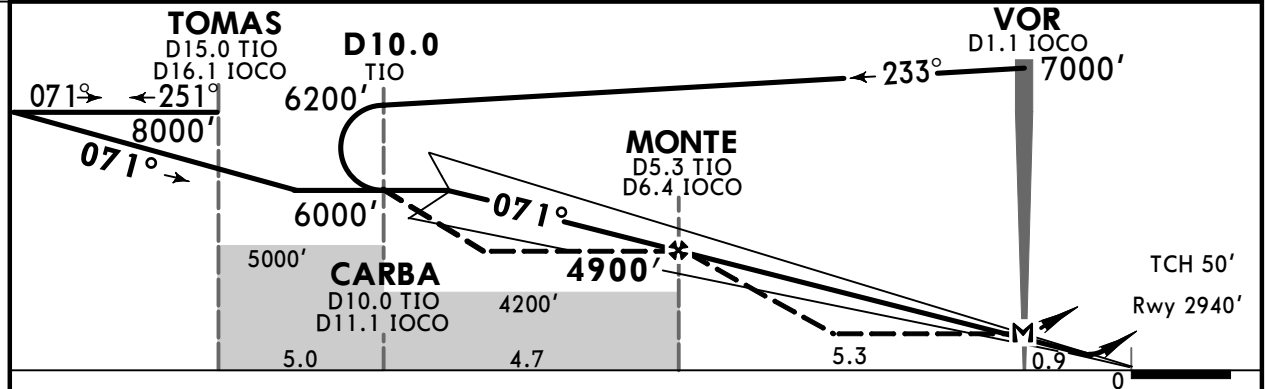
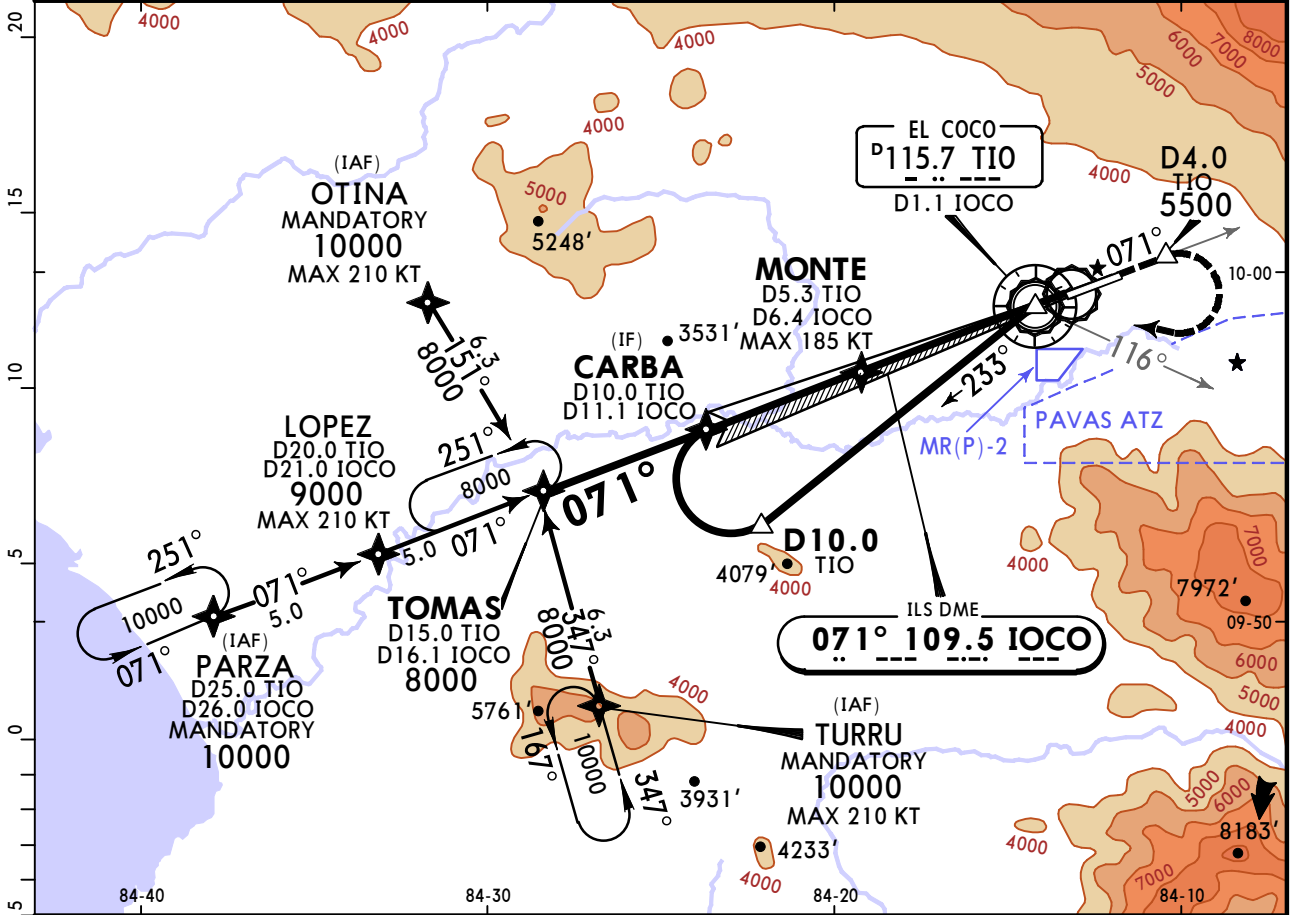
RUNWAY INCURSION HOT SPOTS



See 10-9A for description of Hot Spots

MROC/SJO (ALAJUELA) JUAN SANTAMARIA INTL (11-1) 28 MAY 21 ILS DME Z Rwy 07

ATIS 127.675	COCO Center (R) 119.6	*COCO Approach (R) 120.5	COCO Tower 118.6	Ground 121.9
LOC IOCO 109.5	Final Apch Crs 071°	MONTE 4900' (1960')	ILS DA(H) 3162' (222')	Apt Elev 3048' Rwy 2940'
MISSED APCH: Climb outbound via TIO VOR R-071 to D4.0 TIO and 5500' (650'/NM). Then turn RIGHT, continue climbing to TIO VOR crossing at 7000'. Continue per ATC instructions. Do not exceed TIO VOR R-116 in the turn. Missed approach climb gradient of 300'/NM is required for obstacle clearance.				
Alt Set: hPa Rwy Elev: 103 hPa Trans level: FL200 Trans alt: 19000' RNAV1 GNSS required.				
1. MAX 185 KT on final. 2. Do not enter Pavas ATZ. 3. At CARBA fix contact tower.				



Gnd speed-Kts	70	90	100	120	140	160	MALSR REIL PAPI	5500'	TIO	D4.0	
GS	3.00°	372	478	531	637	743		849	↑	115.7	TIO
MAP at VOR/D1.1 IOCO or FAF to MAP	5.3	4:33	3:32	3:11	2:39	2:16		1:59		R-071	TIO

STRAIGHT-IN LANDING RWY07				CIRCLE-TO-LAND				
ILS		LOC (GS out)		ILS		LOC (GS out)		
DA(H) 3162' (222')		MDA(H) 3360' (420')		DA(H) 3162' (222')		MDA(H) 3360' (420')		
FULL		ALS out		FULL		ALS out		
A								
B							NA	
C	800m		1200m		1600m			
D					2000m			

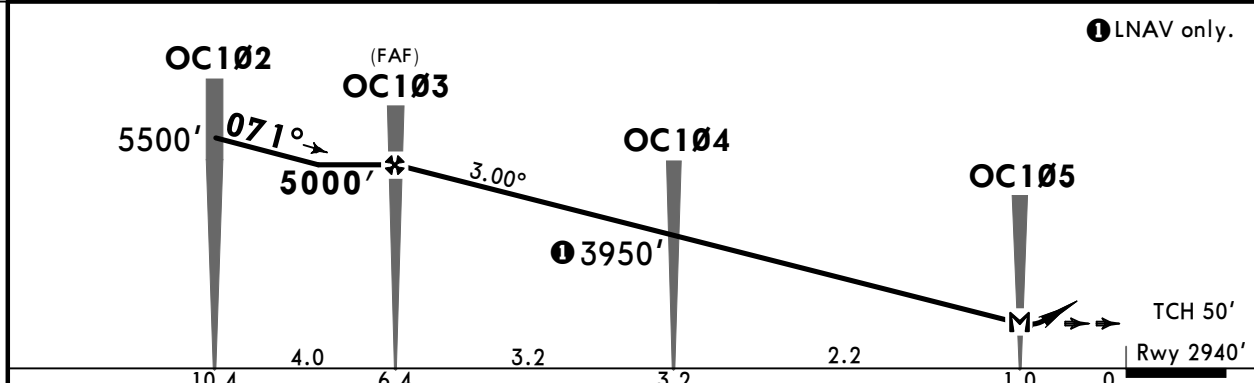
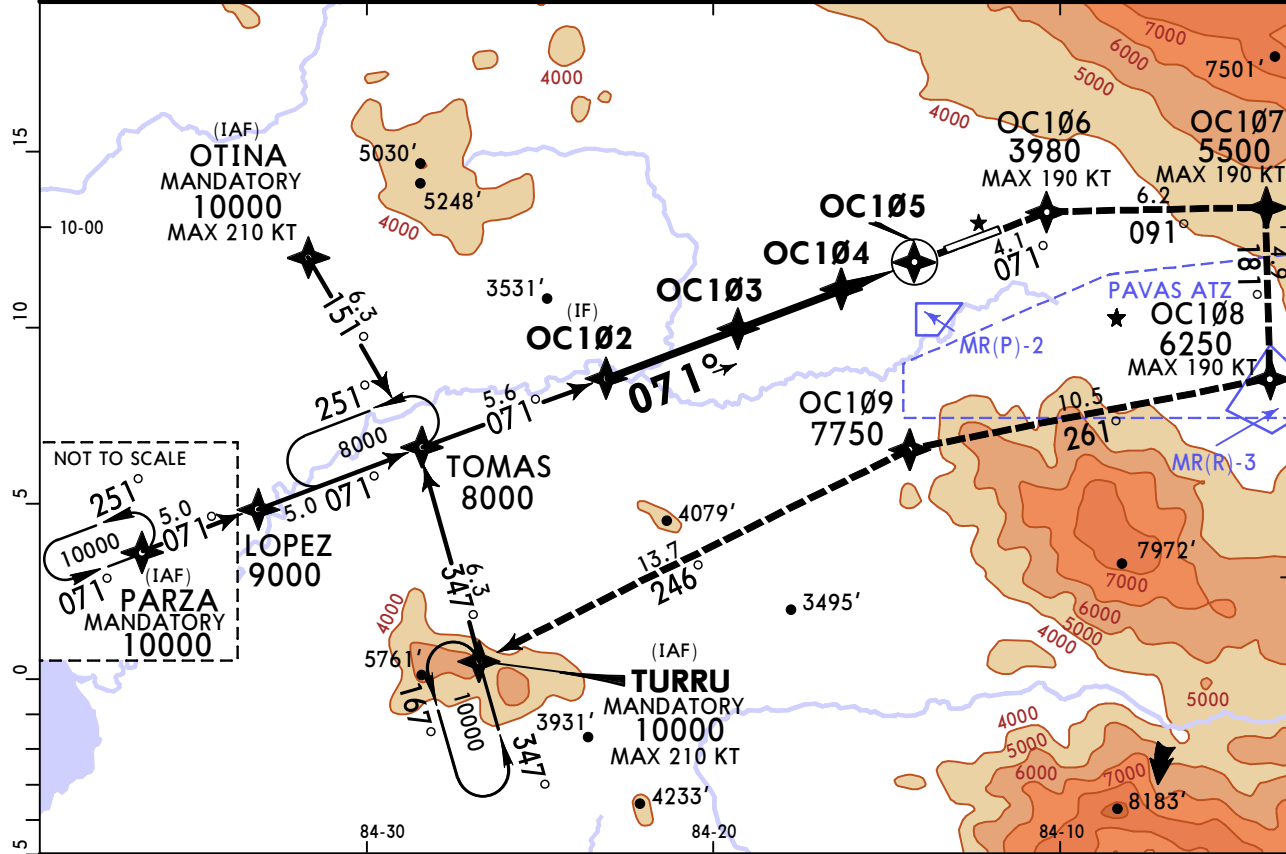
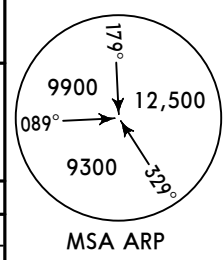
MROC/SJO
(ALAJUELA)
JUAN SANTAMARIA INTL

JEPPesen
28 MAY 21 (12-1)

SAN JOSE, COSTA RICA

MISSED APCH CLIMB GRADIENT MIM 4.0% RNP Rwy 07

ATIS 127.675	COCO Center (R) 119.6	*COCO Approach (R) 120.5	COCO Tower 118.6	Ground 121.9
RNAV	Final Apch Crs 071°	OC103 5000' (2060')	LNAV/VNAV DA(H) 3310' (370')	Apt Elev 3048' Rwy 2940'
MISSED APCH: Climb to OC106. Turn RIGHT to OC107 and climb to 5500'. Then turn RIGHT to OC108 and climb to 6250'. Turn RIGHT to OC109 and climb to 7750'. Turn LEFT to TURRU and climb to 10000'. Missed apch climb gradient mim 4.0%.				
Alt Set: hPa		Rwy Elev: 103 hPa	Trans level: FL200	Trans alt: 19000'
RNP Apch				
1. Procedure used only with Radar service surveillance. 2. For uncompensated Baro-VNAV systems, procedure not authorized below 0°C or above 40°C.				



Gnd speed-Kts	70	90	100	120	140	160	MALSR REIL PAPI	3980'	OC106	5500'	OC107	
Descent Angle	3.00°	372	478	531	637	743		849	↑	RT		
LNAV/VNAV: MAP at DA. LNAV: MAP at OC105.												
FAF to MAP	5.3	4:33	3:32	3:11	2:39	2:16	1:59	STRAIGHT-IN LANDING RWY 07				

LNAV/VNAV DA(H) 3310' (370')		LNAV MDA(H) 3310' (370')	
ALS out		ALS out	
A			
B			
C	2800m		2800m
D			

CHANGES: D-ATIS changed to ATIS.

MROC/SJO (ALAJUELA)

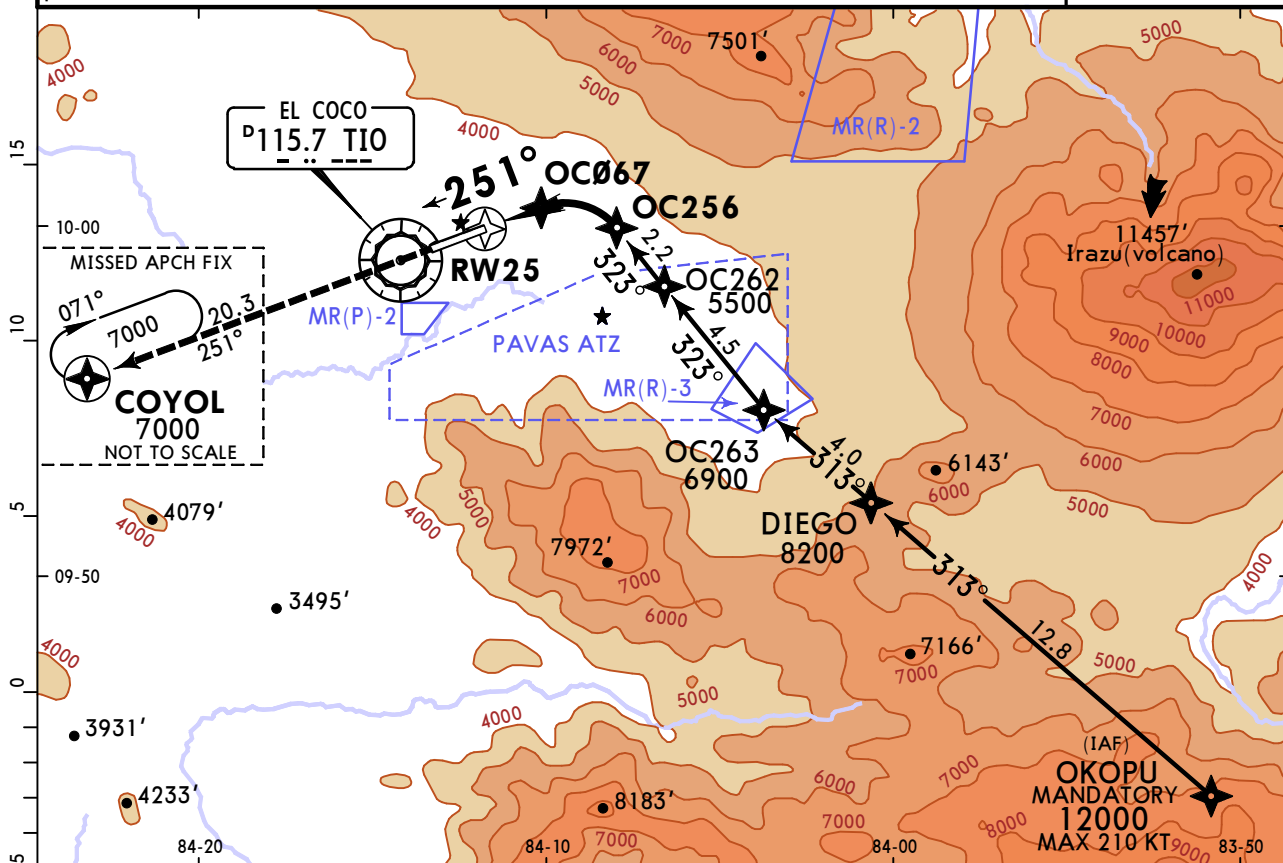
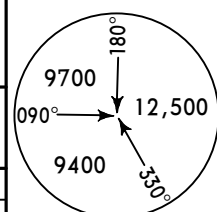
JEPPESEN
28 MAY 21 (12-20)

SAN JOSE, COSTA RICA

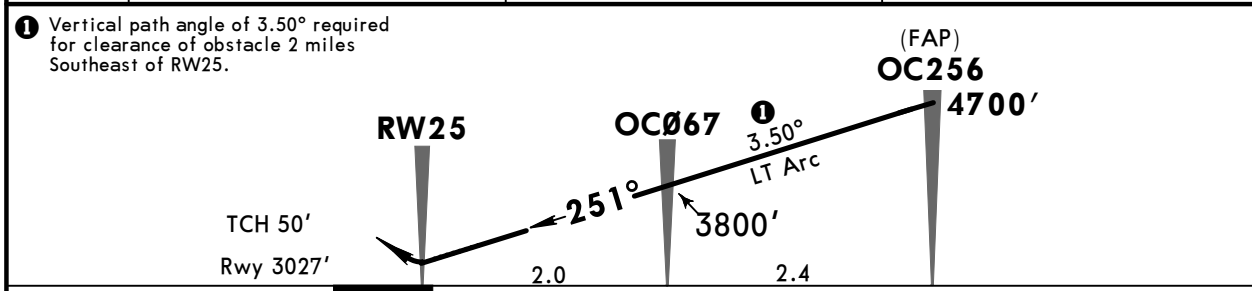
JUAN SANTAMARIA INTL

RNP E Rwy 25 (AR)

ATIS 127.675	COCO Center (R) 119.6	*COCO Approach (R) 120.5	COCO Tower 118.6	Ground 121.9
RNAV	Final Apch Crs 251°	OC256 4700' (1673')	RNP 0.15 DA(H) 3427' (400')	Apt Elev 3048' Rwy 3027'
MISSED APCH: Climb on course 251° to 7000' and hold at COYOL, wait for ATC instructions.				
Alt Set: hPa (IN on req) Rwy Elev: 106 hPa Trans level: FL 200 Trans alt: 19000'				
RNP AR Apch 1. RF authorization required. 2. For uncompensated Baro-VNAV systems, procedure not authorized below 0°C or above 40°C.				



DIST to THR	1.0	2.0	OC256
ALTITUDE	3449'	3800'	4700'



Gnd speed-Kts	70	90	100	120	140	160	PAPI-L	251°	7000'	COYOL
Glide Path Angle 3.50°	434	557	619	743	867	991				
MAP at RW25 or OC256 to RW25	4.4	3:46	2:56	2:38	2:12	1:53				

STRAIGHT-IN LANDING RWY 25	
RNP 0.15 DA(H) 3427' (400')	RNP 0.30 DA(H) 3517' (490')

PANS OPS	A	2800m	2800m
	B		
	C		
	D		

MROC/SJO
(ALAJUELA)

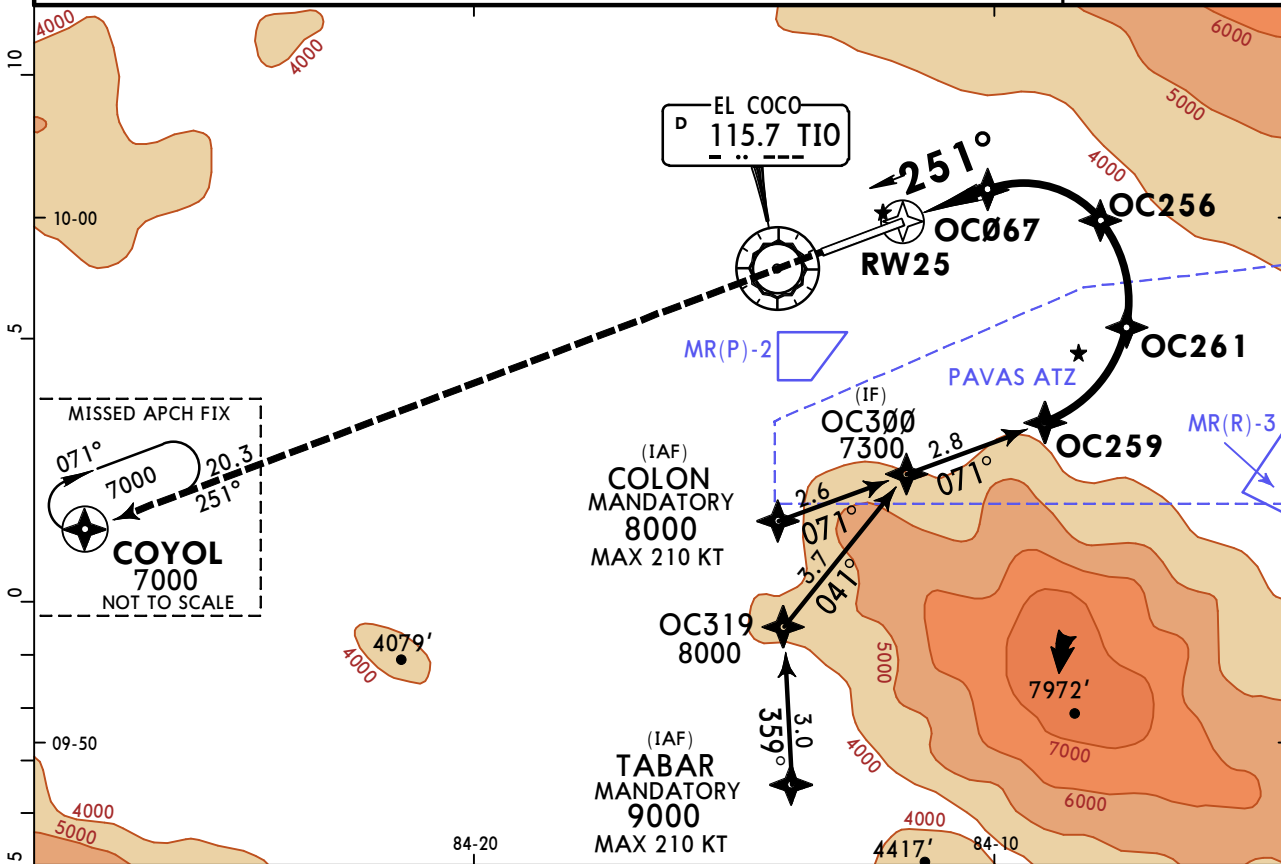
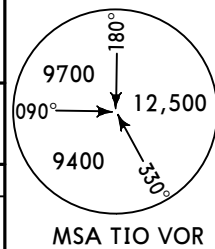
JEPPesen
28 MAY 21 (12-21)

SAN JOSE, COSTA RICA

JUAN SANTAMARIA INTL

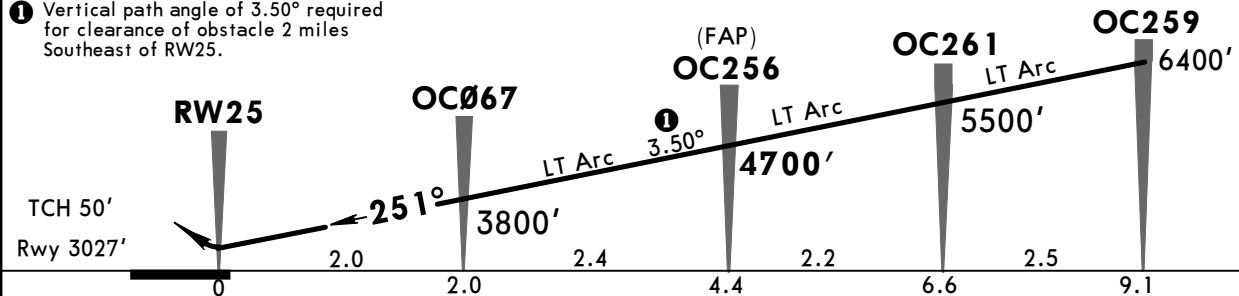
RNP W Rwy 25 (AR)

ATIS 127.675	COCO Center (R) 119.6	*COCO Approach (R) 120.5	COCO Tower 118.6	Ground 121.9
RNAV	Final Apch Crs 251°	OC256 4700' (1673')	RNP 0.15 DA(H) 3427' (400')	Apt Elev 3048' Rwy 3027'
MISSED APCH: Climb on course 251° to 7000' and hold at COYOL, wait for ATC instructions.				
Alt Set: hPa (IN on req) Rwy Elev: 106 hPa Trans level: FL 200 Trans alt: 19000'				
RNP AR Apch 1. RF authorization required. 2. For uncompensated Baro-VNAV systems, procedure not authorized below 0°C or above 40°C.				



DIST to THR	1.0	2.0	OC256
ALTITUDE	3449'	3800'	4700'

① Vertical path angle of 3.50° required for clearance of obstacle 2 miles Southeast of RW25.



Gnd speed-Kts	70	90	100	120	140	160	PAPI-L 251° ↑	7000'	COYOL
Glide Path Angle 3.50°	434	557	619	743	867	991			
MAP at RW25 or OC256 to RW25	4.4	3:46	2:56	2:38	2:12	1:53			

STRAIGHT-IN LANDING RWY 25

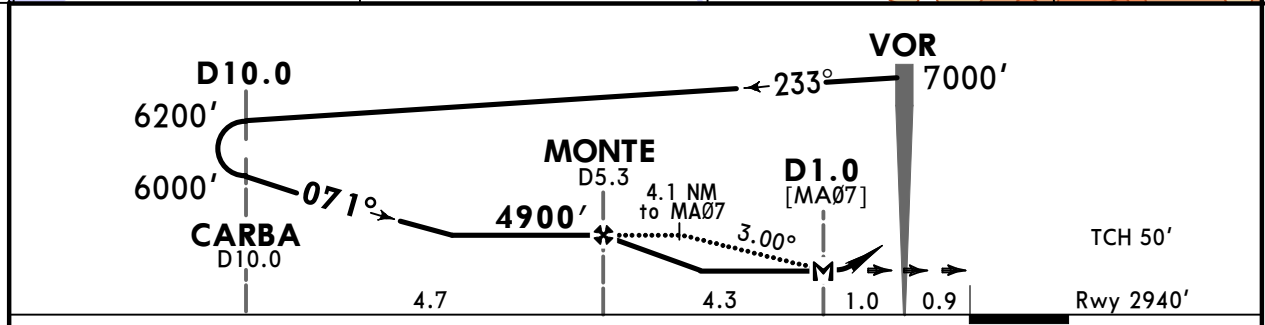
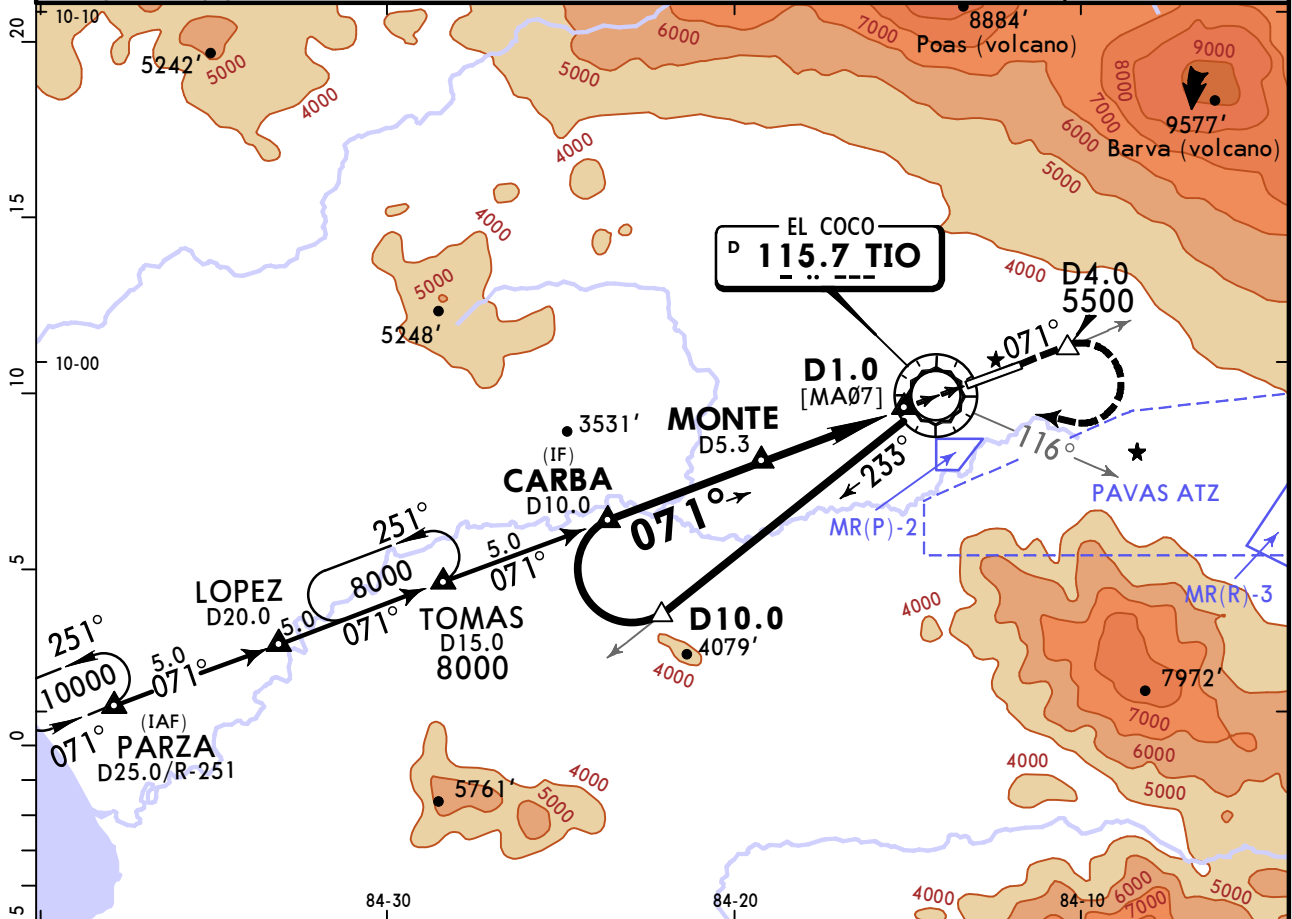
RNP 0.15 DA(H) 3427' (400')	RNP 0.30 DA(H) 3517' (490')
--	--

PANS OPS	A		
	B		
	C	2800m	2800m
	D		

CHANGES: D-ATIS changed to ATIS.

MROC/SJO (ALAJUELA) JUAN SANTAMARIA INTL (13-1) 28 MAY 21 VOR DME Rwy 07

ATIS 127.675	COCO Center (R) 119.6	*COCO Approach (R) 120.5	COCO Tower 118.6	Ground 121.9
VOR TIO 115.7	Final Apch Crs 071°	MONTE 4900' (1960')	MDA(H) 3600' (660')	Apt Elev 3048' Rwy 2940'
MISSED APCH: Climb outbound via TIO VOR R-071 to D4.0 TIO and 5500' (600'/NM). Then turn RIGHT continue climbing to TIO VOR crossing at 7000'. Continue per ATC instructions. Do not exceed TIO VOR R-116 in the turn. Missed approach climb gradient of 300'/NM is required for obstacle clearance.				
Alt Set: hPa Rwy Elev: 103 hPa Trans level: FL 200 Trans alt: 19000'				
1. Do not exceed 200 KT in any phase of the procedure. 2. Do not enter Pavas ATZ due to high density general aviation traffic. 3. At CARBA INT contact tower.				



Gnd speed-Kts	70	90	100	120	140	160	MALSR REIL PAPI 5500' TIO via 115.7 R-071 D4.0 TIO
Descent Angle	3.00°	372	478	531	637	849	
MAP at D1.0 or FAF to MAP	4.3	3:41	2:52	2:35	2:09	1:37	

STRAIGHT-IN LANDING RWY 07		CIRCLE-TO-LAND RWY 25	
MDA(H) 3600' (660')			
ALS out			

A	2800m	SEE CYRUS VISUAL PROCEDURE
B		
C		
D		

MROC/SJO



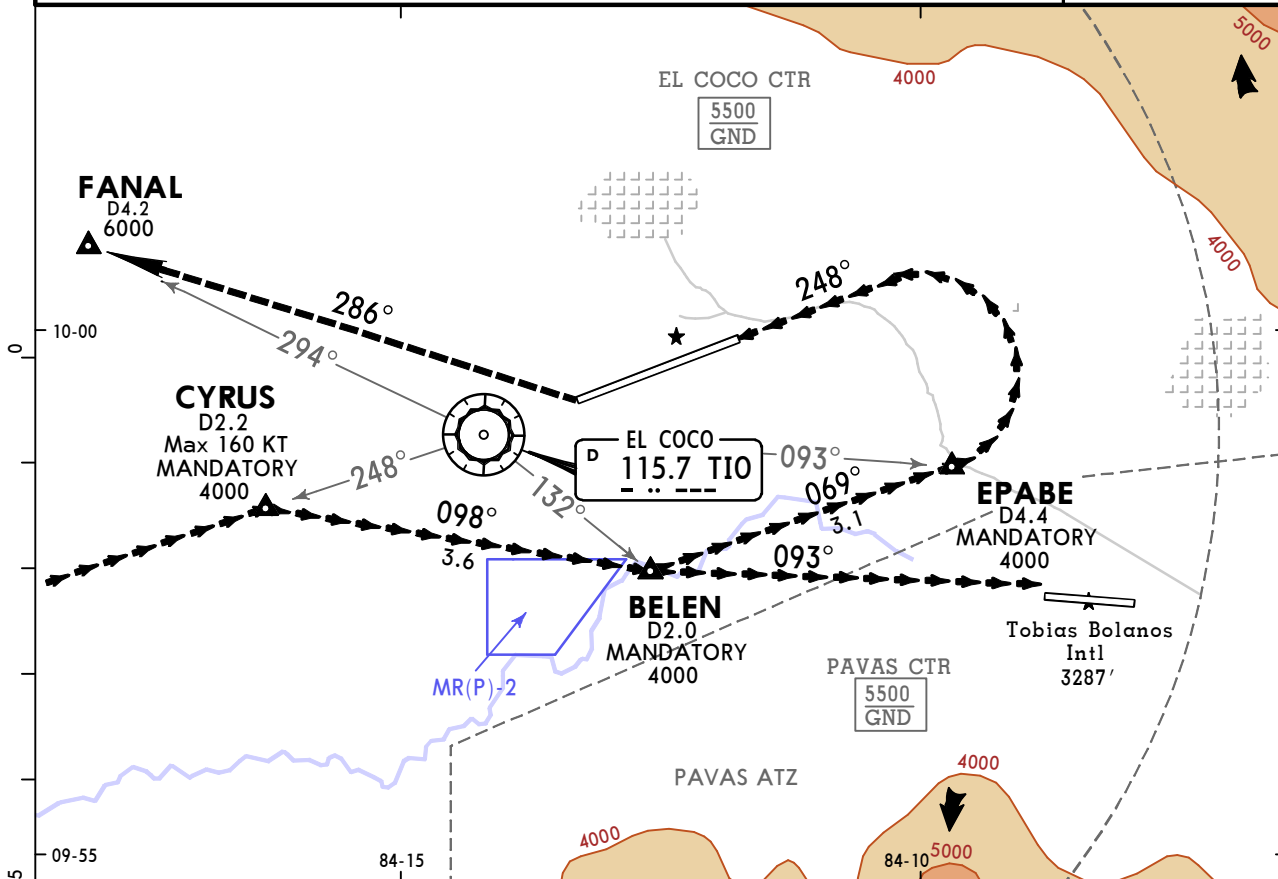
SAN JOSE, COSTA RICA

(ALAJUELA) JUAN SANTAMARIA INTL
(ALSO SERVES TOBIAS BOLANOS INTL)

(19-1) 28 MAY 21

CYRUS VISUAL Rwy 25

BRIEFING STRIP™	ATIS	COCO Center (R)	*COCO Approach (R)	COCO Tower	Ground	
	127.675	119.6	120.5	118.6	121.9	
	VOR TIO 115.7	Final Apch Crs- Refer to Planview	No FAF	CEIL-VIS 1500' - 5.0 km	Apt Elev 3027'	
	MISSED APCH: Climb to 7000' and hold visual segment of flight legs, expect ATC instructions. TOBIAS BOLANOS INTL: Expect ATC instructions.					
Alt Set: hPa		Apt Elev: 107 hPa	Trans level: FL 200	Trans alt: 19000'		
MAX 160 KT.					MSA TIO VOR	



REPORTING POINT DESCRIPTIONS

- CYRUS:** CROSSING ROADS BETWEEN CIRUELAS AND SAN RAFAEL OF ALAJUELA.
- BELEN:** BELEN HYDROELECTRIC PLANT
- EPABE:** EPA WARDWARE SHOP ON CARIARI BRIDGE CROSSING GENERAL CANAS HIGHWAY.
- FANAL:** MANOLOS OLD HALL ON LA GARITA CROSSING, ROUTE 1.

Lighting - Refer to Airport Chart	7000' ↑
--	-------------------

WEATHER MINIMUMS

Ceiling **1500'** - VIS **5.0 km**

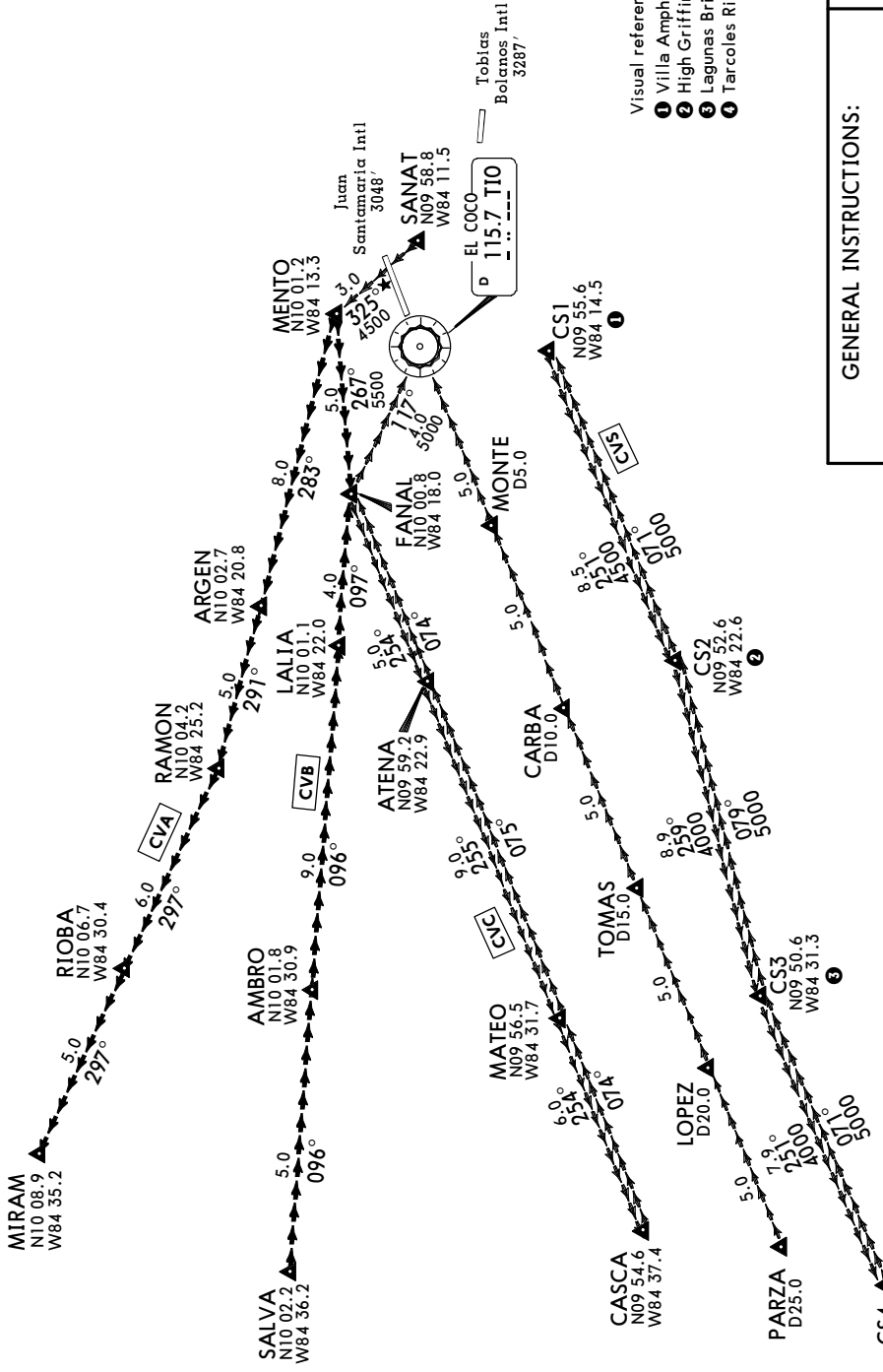
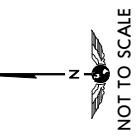
PANS OPS

SAN JOSE COSTA RICA
VISUAL CORRIDOR
WEST SECTOR

JEYPESEN
 28 MAY 21 19-2

MROC/SJO
 (ALAJUELA) JUAN SANTAMARIA INTL
 (ALSO SERVES TOBIAS BOLANOS INTL)

ATIS	COCO Center (R)	*COCO Approach (R)	COCO Tower	PAVAS Tower	COCO Ground
127.675	119.6	120.5	118.6	118.3	121.9
VOR TIO 115.7	Final Apch Crs NOT APPLICABLE	No FAF	CEIL-VIS NOT APPLICABLE	Apt Elev 3048'	
MISSED APCH: No missed procedure.					
Alt Set: hPa Apt Elev: 107 hPa Trans level: FL 200 Trans alt: 19000'					
1. Segment CVC and CVS usable only with Radar service. 2. Available between sunrise and sunset.					



- Visual references:
- 1 Villa Amphitheater, Colon City.
 - 2 High Griffin Town of Puriscal.
 - 3 Legunas Bridge over Turrubares River.
 - 4 Tarcoles River mouth.

GENERAL INSTRUCTIONS:

- CVA** Segment Departure Only:
Available Altitudes - 070 080 090 and 100 FT
- CVB** Segment Arrival Only:
Available Altitudes - 070 080 and 090 FT
- CVC** Segment Arrival and Departure:
Arrival Available Altitude - 050 FT
Departure Available Altitude - 060 FT
- CVS** Segment Arrival and Departure:
Arrival Available Altitude - 050 FT
Departure Available Altitude - 045 FT until CS2, then 040 FT

TAKE-OFF INSTRUCTIONS:

Segment	MROC			MRPV		
	RWY 07	RWY 25	RWY 09	RWY 27	RWY 27	RWY 27
CVA	DIRECT to MENTO	DIRECT to ARGEN	DIRECT to SANAT	DIRECT to SANAT	DIRECT to SANAT	DIRECT to SANAT
CVC	DIRECT to MENTO	DIRECT to FANAL	DIRECT to SANAT	DIRECT to SANAT	DIRECT to SANAT	DIRECT to SANAT
CVS	DIRECT to CS1	DIRECT to CS1	DIRECT to CS1	DIRECT to CS1	DIRECT to CS1	DIRECT to CS1

Higher altitudes only with ATC authorization.
 Direction of turns during take off and initial altitude will be indicated by ATC.
 Outside of Visual Corridors, VFR altitudes should be used according to the track.

Chart changes since cycle 23-2021

ADD = added chart, REV = revised chart, DEL = deleted chart.

ACT	PROCEDURE IDENT	INDEX	REV DATE	EFF DATE
-----	-----------------	-------	----------	----------

SAN JOSE, (JUAN SANTAMARIA INTL - MROC)

TERMINAL CHART CHANGE NOTICES

Chart Change Notices for Airport MROC

Type: Terminal

Effectivity: Temporary

Begin Date: Immediately

End Date: 20220601

Precision Approach Lighting System (ALS) on Runway 07 is out of service.

SUDU..PONPA..PTA..GBE..DIL..VIE..SAVT