

## General Information

Location: CAMAGUEY CUB  
ICAO/IATA: MUCM / CMW  
Lat/Long: N21° 25.22', W077° 50.85'  
Elevation: 407 ft

Airport Use: Public  
Daylight Savings: Observed  
UTC Conversion: +5:00 = UTC  
Magnetic Variation: 8.0° W

Fuel Types: Jet A-1  
Customs: Yes  
Airport Type: IFR  
Landing Fee: Yes  
Control Tower: Yes  
Jet Start Unit: No  
LLWS Alert: No  
Beacon: Yes

Sunrise: 1141 Z  
Sunset: 2310 Z

## Runway Information

Runway: 08  
Length x Width: 9843 ft x 148 ft  
Surface Type: concrete  
TDZ-Elev: 400 ft  
Lighting: Edge, ALS  
Stopway: 197 ft

Runway: 26  
Length x Width: 9843 ft x 148 ft  
Surface Type: concrete  
TDZ-Elev: 400 ft  
Lighting: Edge  
Stopway: 197 ft

## Communication Information

Agramonte Tower: 118.500  
Camaguey Approach: 121.300  
Camaguey Radio: 126.900 Air-Ground  
Havana ACC: 123.700  
Havana ACC: 120.250  
Camaguey Radio: 887.600 Air-Ground  
Camaguey Radio: 556.200 Air-Ground

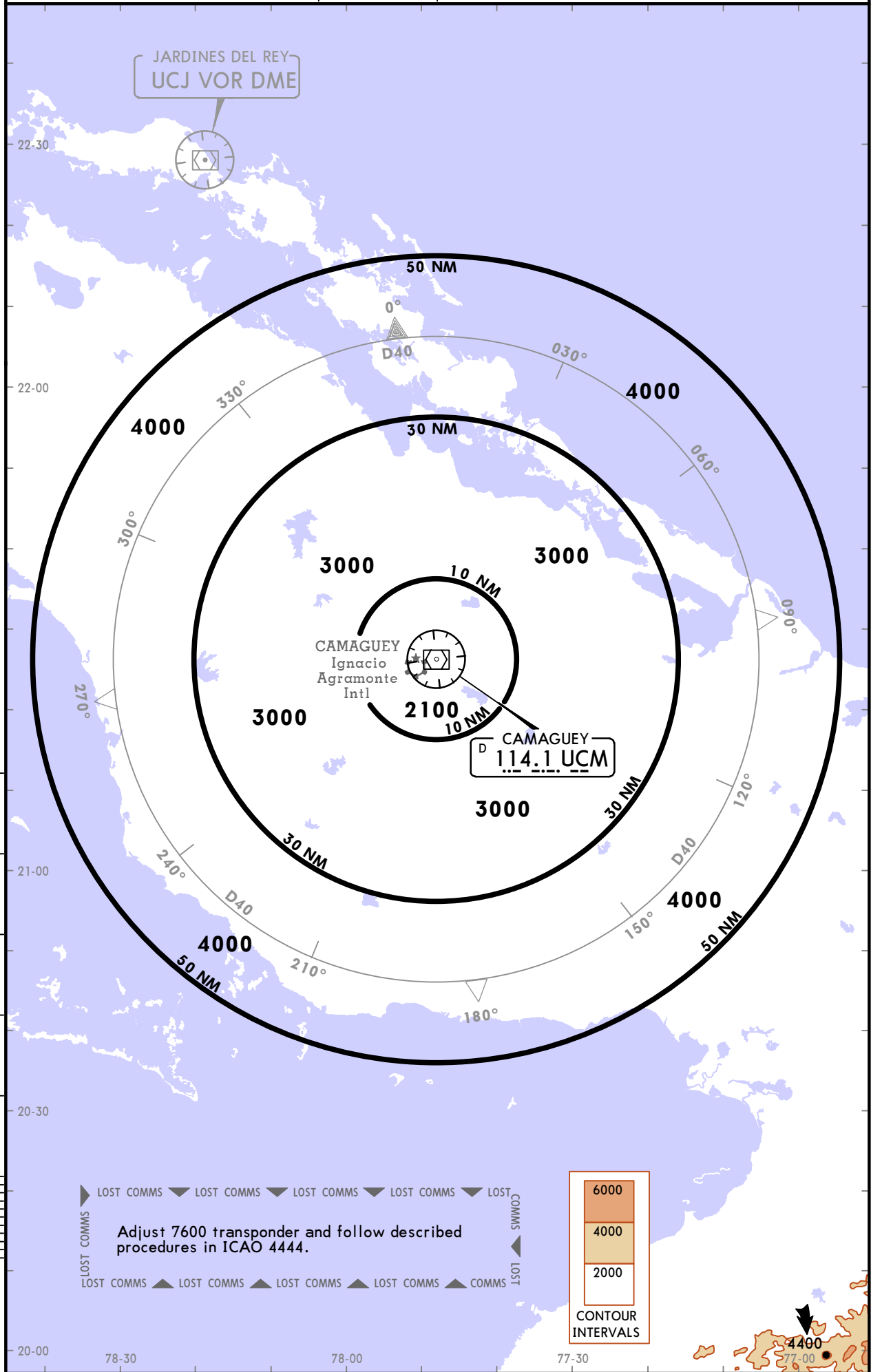
# MUCM/CMW IGNACIO AGRAMONTE INTL

**JEPPESEN**  
20 AUG 21 (10-1R)

# CAMAGUEY, CUBA

**RADAR MINIMUM ALTITUDES**

*CAMAGUEY Approach <b>121.3</b>	Apt Elev <b>407</b>	Alt Set: hPa Trans level: By ATC Trans alt: 3000 Remark: Exclusive use chart to verify assigned altitude to identified aircraft.
------------------------------------	------------------------	---







**JEPESENCAMAGUEY, CUBA**  
**RNAV SID**  
 29 NOV 19 10-3 Eff 5 Dec

Apt Elev 407  
 Trans alt: 3000  
 RNAV-1.

**BOKTO2 [BOKTO2]**  
**DASUG5 [DASUG5]**  
**DELBA2A [DELBA2A]**  
**PETMU5 [PETMU5]**  
**RNAV CCO DEPARTURES (RWY 08)**

LOST COMMS  
 Within 5 minutes after takeoff, and if it is not convenient to finish the flight, active SSR 7600, continue on assigned SID and/or route, climb to FL160 or the requested flight level in flight plan, whichever is lower. 10 minutes after takeoff climb to the requested flight level in flight plan if it is higher than FL160.

**BOKTO2**  
 Climb on track 091° at 1000 proceed direct to BOKTO and continue by assigned transition.

**BOKTO2 TRANSITIONS**  
**ENAMO**  
 From BOKTO proceed on track 013° to ENAMO.

**DASUG5**  
 Climb on track 091° at 1000 proceed direct to BOKTO, turn LEFT proceed on track 359° to DASUG and continue by assigned transition.

**DASUG5 TRANSITIONS**  
**ALTIB**  
 From DASUG proceed on track 324° to ALTIB.

**BORDO**  
 From DASUG proceed on track 348° to BORDO.

**DYNAH**  
 From DASUG proceed on track 360° to DYNAH.

**HUZAR**  
 From DASUG proceed on track 279° to HUZAR.

**JARDINES DEL REY**  
 From DASUG proceed on track 322° to JARDINES DEL REY.

**DELBA2A**  
 Climb on track 076° at 1500 turn LEFT direct to CM509, proceed on track 279° to DELBA and continue by assigned transition.

**DELBA2A TRANSITION**  
**HUZAR**  
 From DELBA proceed on track 299° to HUZAR.

**PETMU5**  
 Climb on track 076° at 1500 turn LEFT direct to PETMU and continue by assigned transition.

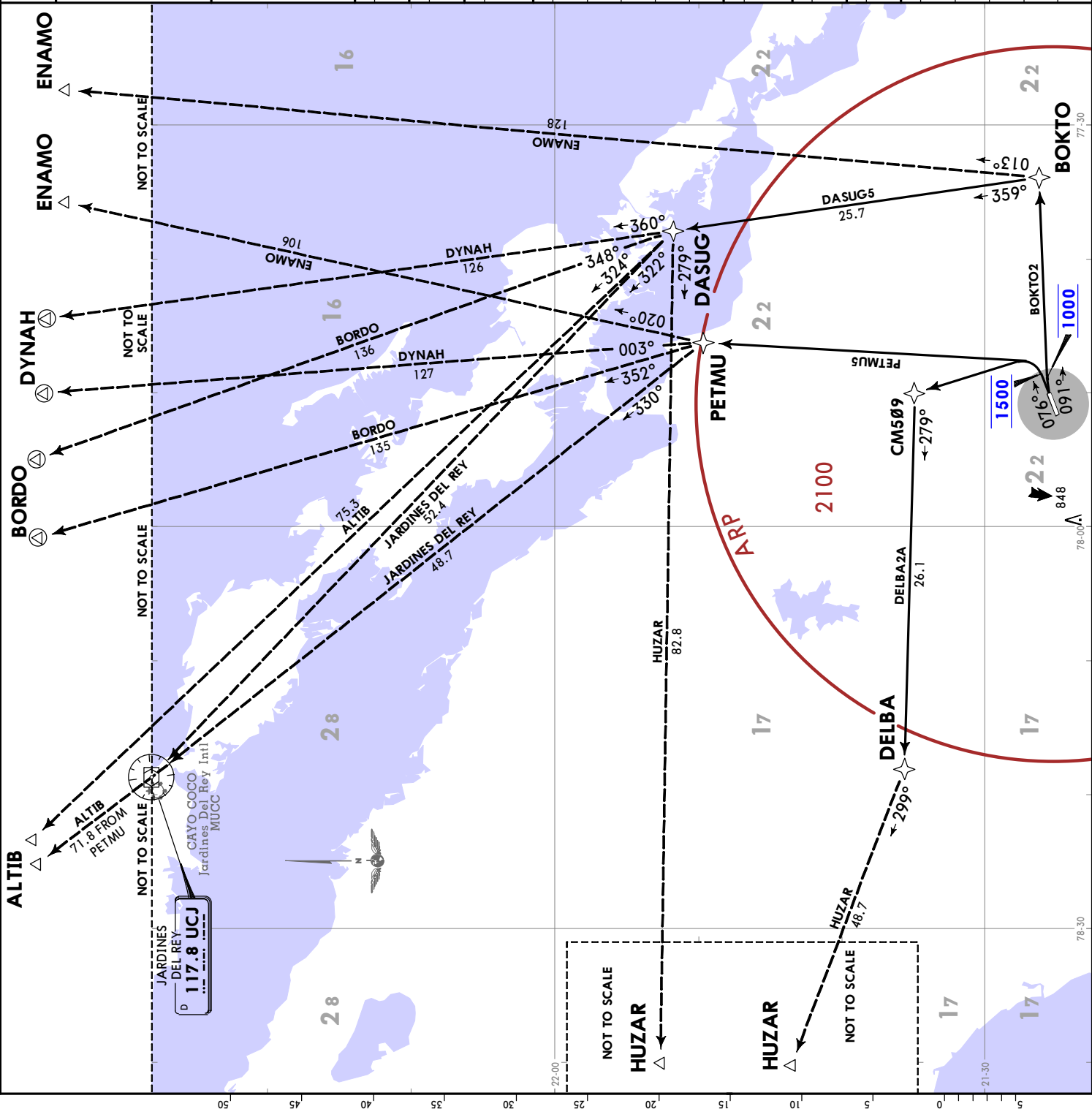
**PETMU5 TRANSITIONS**  
**ALTIB**  
 From PETMU proceed on track 330° to ALTIB.

**BORDO**  
 From PETMU proceed on track 352° to BORDO.

**DYNAH**  
 From PETMU proceed on track 003° to DYNAH.

**ENAMO**  
 From PETMU proceed on track 020° to ENAMO.

**JARDINES DEL REY**  
 From PETMU proceed on track 330° to JARDINES DEL REY.



**MUCM/CMW**  
**IGNACIO AGRAMONTE INTL**

Apt Elev  
407  
 Trans alt: 3000  
 RNAV-1.

**KANID5 [KANID5]  
 SATOG7 [SATOG7]  
 TAGON4B [TAGO4B]  
 RNAV CCO DEPARTURES  
 (RWY 26)**

LOST COMMS  
 Within 5 minutes after takeoff, and if it is not convenient to finish the flight, active SSR 7600, continue on assigned SID and/or route, climb to FL160 or the requested flight level in flight plan, whichever is lower. 10 minutes after takeoff climb to the requested flight level in flight plan if it is higher than FL160.

**KANID5**  
 Climb on track 256°, at 1500 turn RIGHT direct to KANID and continue by assigned transition.

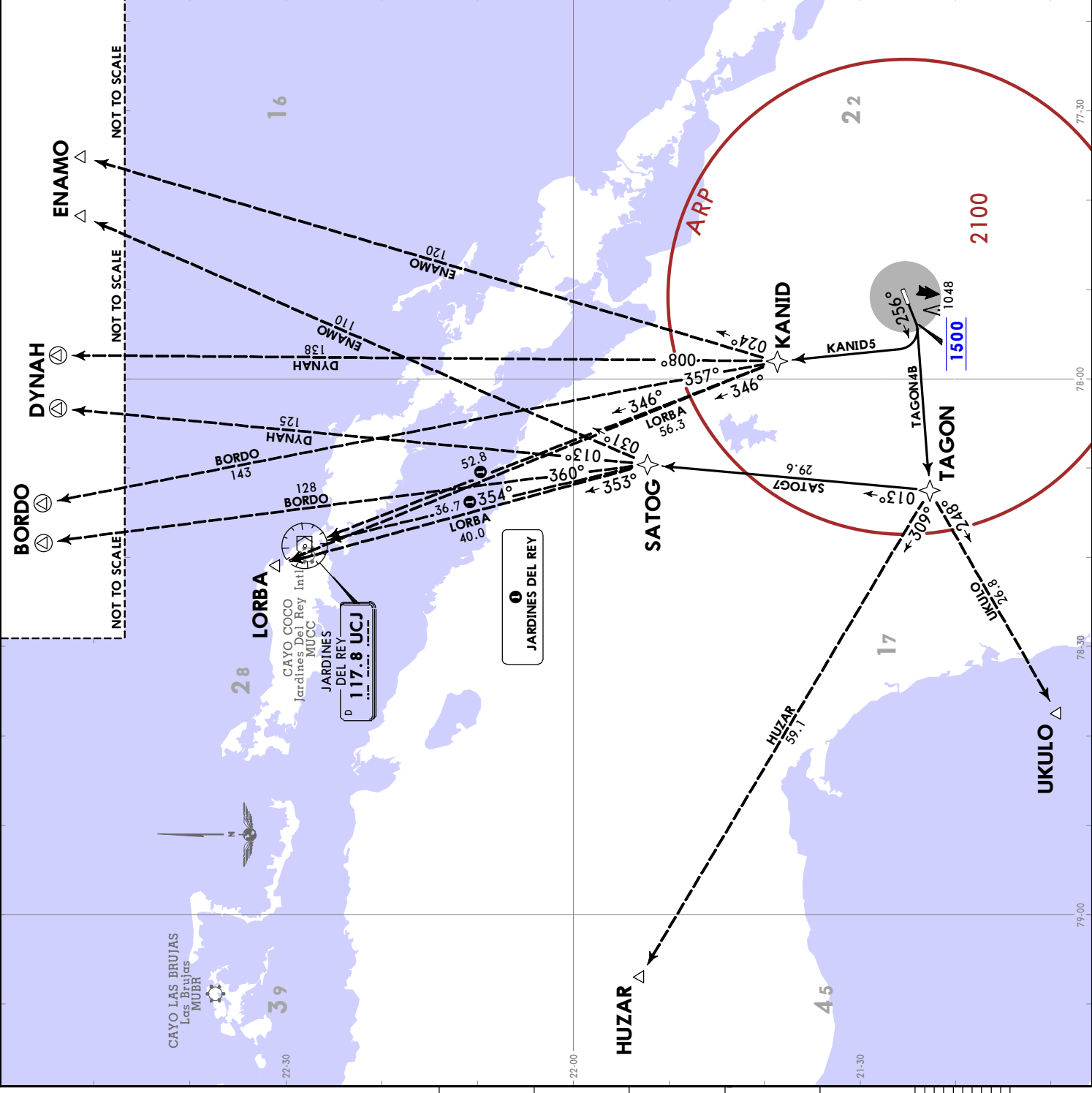
**KANID5 TRANSITIONS**  
 From KANID proceed on track 357° to BORDO.  
 From KANID proceed on track 008° to DYNAB.  
 From KANID proceed on track 024° to ENAMO.  
 From KANID proceed on track 346° to JARDINES DEL REY UCLVOR.  
 From KANID proceed on track 346° to LORBA.

**SATOG7**  
 Climb on track 256°, at 1500 turn RIGHT direct TAGON, turn RIGHT on track 013° to SATOG and continue by assigned transition.

**SATOG7 TRANSITIONS**  
 From SATOG proceed on track 360° to BORDO.  
 From SATOG proceed on track 013° to DYNAB.  
 From SATOG proceed on track 031° to ENAMO.  
 From SATOG proceed on track 354° to JARDINES DEL REY UCLVOR.  
 From SATOG proceed on track 353° to LORBA.

**TAGON4B**  
 Climb on track 256°, at 1500 turn RIGHT direct to TAGON, and continue by assigned transition.

**TAGON4B TRANSITIONS**  
 From TAGON proceed on track 309° to HUZAR.  
 From TAGON proceed on track 248° to UKULO.





# MUCM/CMW

IGNACIO AGRAMONTE INTL

JEPPESEN

29 NOV 19

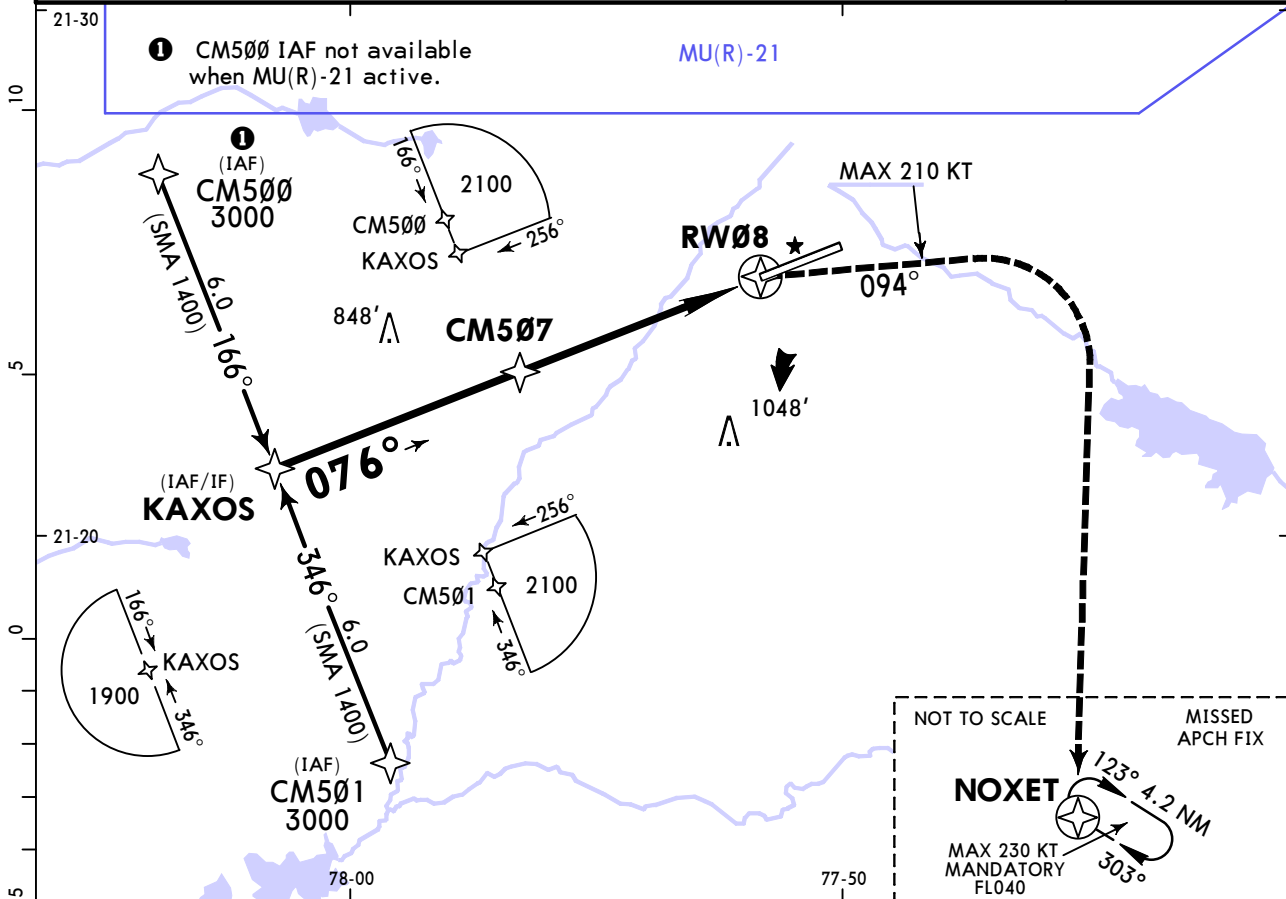
Eff 5 Dec

(12-1)

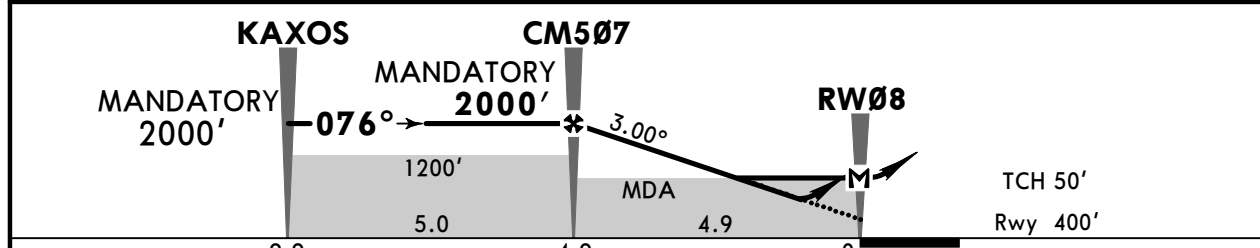
# CAMAGUEY, CUBA

RNP Rwy 08 (LNAV/VNAV, LNAV)

*CAMAGUEY Approach <b>121.3</b>			*AGRAMONTE Tower <b>118.5</b>		
RNAV	Final Apch Crs <b>076°</b>	<b>CM507</b> MANDATORY <b>2000'</b> (1600')	LNAV/VNAV DA(H) <b>660'</b> (260')	Apt Elev 407'	Rwy 400'
<b>MISSED APCH:</b> Climb on track 094° until 1500', Max IAS 210 KT, turn RIGHT direct to NOXET at FL040 and expect ATC instructions.					TAA 25 NM CM500, CM501, KAXOS
Alt Set: hPa		Rwy Elev: 15 hPa	Trans level: By ATC		Trans alt: 3000'
RNP Apch					
For loss of RNAV capability: Climb on track 094° until 3000' and request ATC instructions.					



NM to RW08	4.0	3.0	2.0	1.0
ALTITUDE	1720'	1400'	1090'	770'



Gnd speed-Kts	70	90	100	120	140	160	SALS PAPI <b>1500'</b> ↑ on track <b>094°</b>
Descent Angle 3.00°	372	478	531	637	743	849	
LNAV/VNAV: MAP at DA, LNAV: MAP at RW08							
FAF to MAP	4.9	4:12	3:16	2:56	2:27	2:06	1:50

STRAIGHT-IN LANDING RWY 08				CIRCLE-TO-LAND	
LNAV/VNAV DA(H) <b>660'</b> (260')		LNAV MDA(H) <b>750'</b> (350')		Max Kts	MDA(H)
ALS out		ALS out			
A	1.3 km	1.6 km	1.5 km	100	1000' (593') -3.1 km
B				135	
C	1.6 km	1.6 km	1.6 km	180	1500' (1093') -6.1 km
D				205	

CHANGES: Rwy ident, procedure, minimums.

© JEPPESEN, 2015, 2019. ALL RIGHTS RESERVED.

# MUCM/CMW

IGNACIO AGRAMONTE INTL

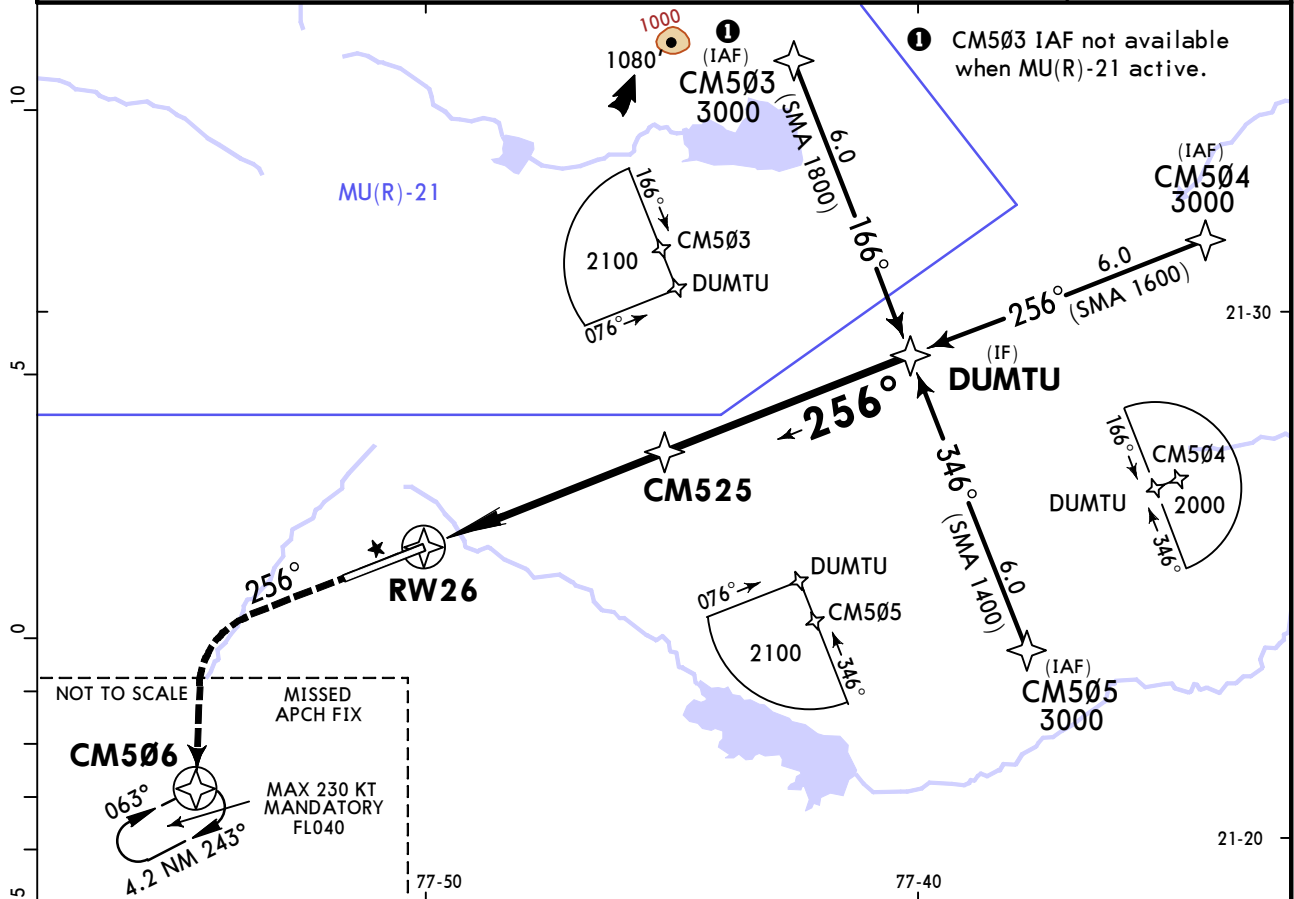
**JEPPESEN**  
29 NOV 19  
Eff 5 Dec

(12-2)

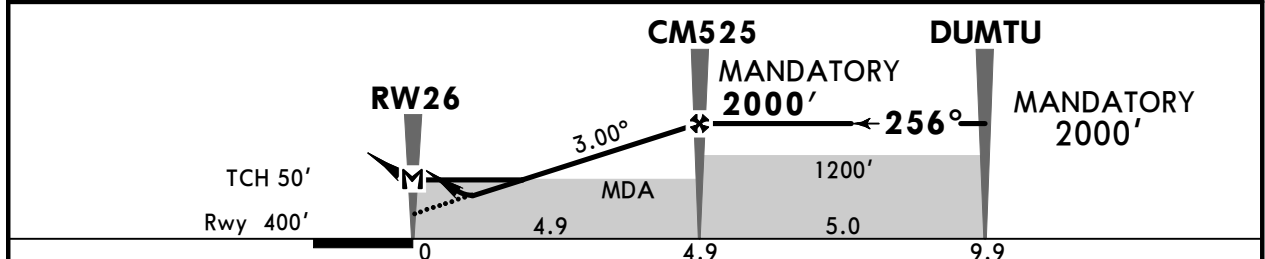
# CAMAGUEY, CUBA

RNP Rwy 26 (LNAV,VNAV, LNAV)

*CAMAGUEY Approach 121.3			*AGRAMONTE Tower 118.5		
RNAV	Final Apch Crs <b>256°</b>	CM525 MANDATORY <b>2000'</b> (1600')	LNAV/VNAV DA(H) <b>650'</b> (250')	Apt Elev 407'	Rwy 400'
<b>MISSED APCH:</b> Climb on track 256° until 1500', turn LEFT direct to CM506 at FL040 and expect ATC instructions.					TAA 25 NM CM503, CM504, CM505
Alt Set: hPa	Rwy Elev: 15 hPa	Trans level: By ATC	Trans alt: 3000'		
RNP Apch					
For loss of RNAV capability: Climb on track 256° until 3000' and request ATC instructions.					



NM to RW26	1.0	2.0	3.0	4.0
ALTITUDE	770'	1090'	1400'	1720'



Gnd speed-Kts	70	90	100	120	140	160	PAPI-L 1500' on track
Descent Angle 3.00°	372	478	531	637	743	849	
LNAV/VNAV: MAP at DA, LNAV: MAP at RW26							
FAF to MAP	4.9	4:12	3:16	2:56	2:27	2:06	1:50

STRAIGHT-IN LANDING RWY 26		CIRCLE-TO-LAND	
LNAV/VNAV DA(H) <b>650'</b> (250')	LNAV MDA(H) <b>740'</b> (340')	Max Kts	MDA(H)
1.6 km	1.8 km	100	1000' (593') -3.1 km
		135	
		180	1500' (1093') -6.1 km
		205	

PANS OPS

# MUCM/CMW

IGNACIO AGRAMONTE INTL



29 NOV 19

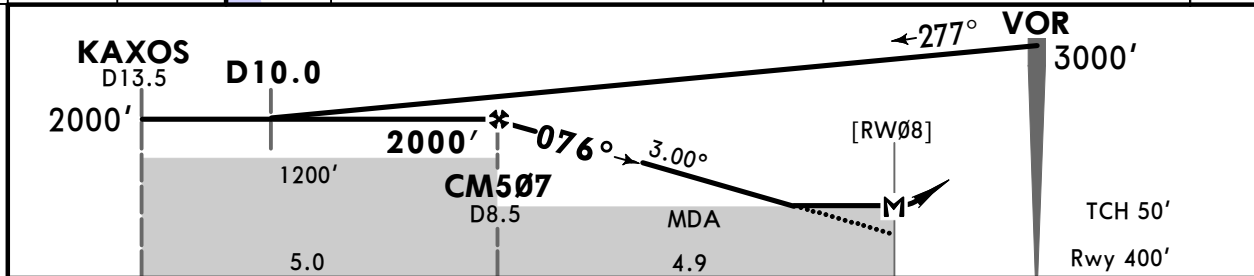
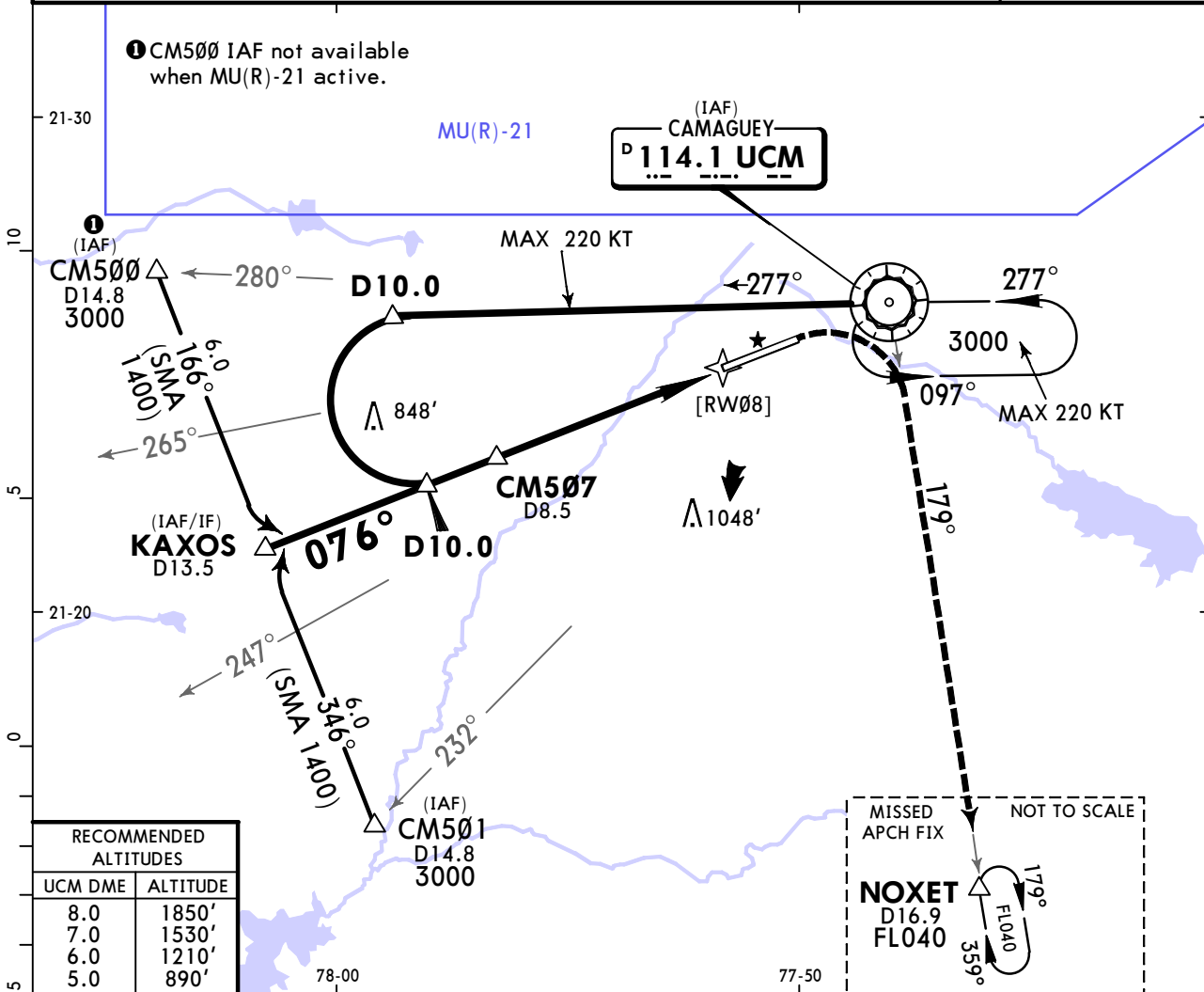
13-1

Eff 5 Dec

# CAMAGUEY, CUBA

VOR Rwy 08

*CAMAGUEY Approach <b>121.3</b>				*AGRAMONTE Tower <b>118.5</b>	
VOR UCM <b>114.1</b>	Final Apch Crs <b>076°</b>	CM507 <b>2000'</b> (1600')	MDA(H) <b>750'</b> (350')	Apt Elev 407'	2100  MSA UCM VOR
MISSED APCH: Turn RIGHT to intercept UCM VOR R-179 outbound, climbing to FL040 to NOXET holding pattern and expect ATC instructions.					
Alt Set: hPa		Rwy Elev: 15 hPa	Trans level: By ATC	Trans alt: 3000'	
DME required.					



Gnd speed-Kts	70	90	100	120	140	160	SALS PAPI RT	UCM <b>114.1</b> <b>R-179</b>	NOXET
Descent Angle 3.00°	372	478	531	637	743	849			
MAP at RW08 or FAF to MAP	4.9	4:12	3:16	2:56	2:27	2:06			

<b>STRAIGHT-IN LANDING RWY 08</b> MDA(H) <b>750'</b> (350')				<b>CIRCLE-TO-LAND</b>			
ALS out			Max Kts	MDA(H)			
A				100	1000'(593') -3.1 km		
B	1.5 km			135			
C				180	1500'(1093') -6.1 km		
D	1.6 km			205			

# MUCM/CMW

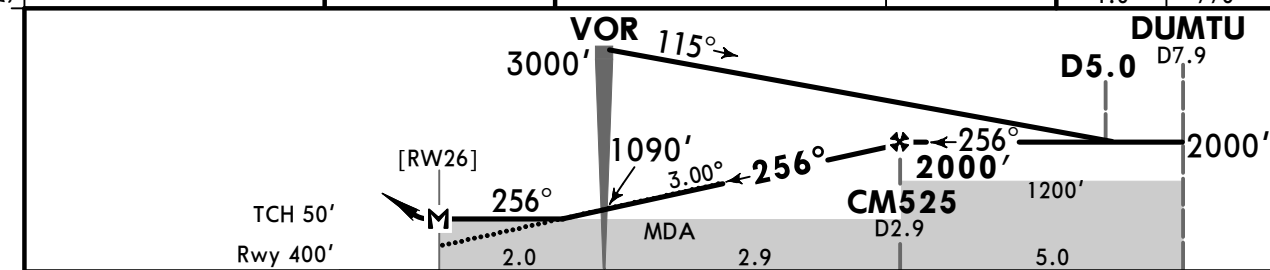
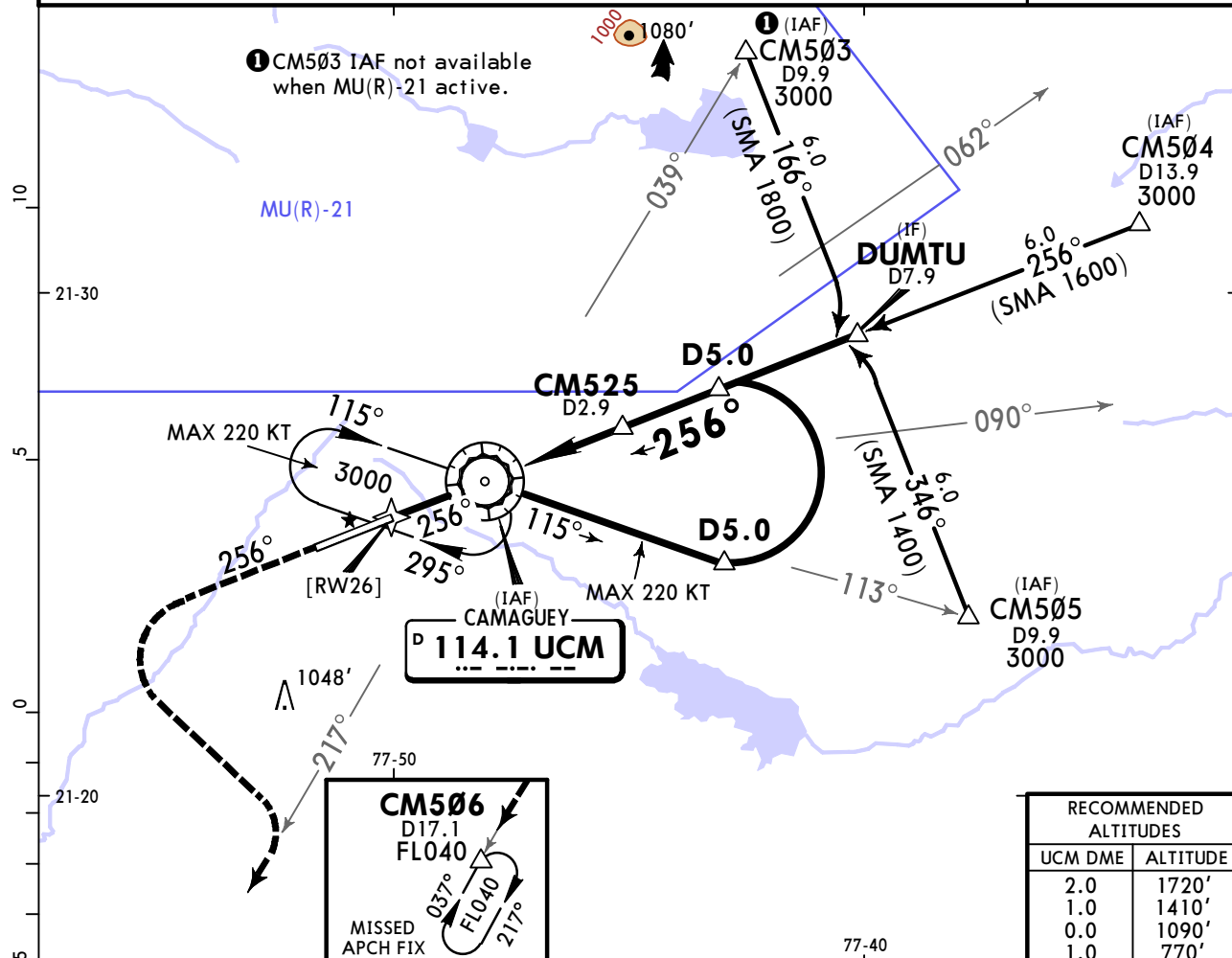
## IGNACIO AGRAMONTE INTL

**JEPPESSEN**  
29 NOV 19 **13-2** Eff 5 Dec

# CAMAGUEY, CUBA

## VOR Rwy 26

*CAMAGUEY Approach <b>121.3</b>				*AGRAMONTE Tower <b>118.5</b>	
VOR UCM <b>114.1</b>	Final Apch Crs <b>256°</b>	CM525 <b>2000'</b> (1600')	MDA(H) <b>740'</b> (340')	Apt Elev 407' Rwy 400'	2100  MSA UCM VOR
<b>MISSED APCH:</b> Climb outbound on UCM VOR R-256 until 1500', turn LEFT to intercept R-217 UCM VOR R-217 outbound to CM506 holding pattern to FL040 and expect ATC instructions.					
Alt Set: hPa	Rwy Elev: 15 hPa	Trans level: By ATC	Trans alt: 3000'	DME required.	



Gnd speed-Kts	70	90	100	120	140	160	PAPI-L <b>1500'</b> UCM ↑ on <b>114.1</b> <b>R-256</b>
Descent Angle 3.00°	372	478	531	637	743	849	
MAP at RW26 or FAF to MAP	4:12	3:16	2:56	2:27	2:06	1:50	

STRAIGHT-IN LANDING RWY 26		CIRCLE-TO-LAND	
MDA(H) <b>740'</b> (340')		MDA(H) _____	
PANS OPS	A	1.6 km	1000' (593') -3.1 km
	B		
	C		
	D		1500' (1093') -6.1 km

## Chart changes since cycle 23-2021

ADD = added chart, REV = revised chart, DEL = deleted chart.

ACT	PROCEDURE IDENT	INDEX	REV DATE	EFF DATE
-----	-----------------	-------	----------	----------

**CAMAGUEY, (IGNACIO AGRAMONTE INTL - MUCM)**

## TERMINAL CHART CHANGE NOTICES

No Chart Change Notices for Airport MUCM

SUDU..PONPA..PTA..GBE..DIL..VIE..SAVT