

General Information

Location: THE VALLEY AIA
ICAO/IATA: TQPF / AXA
Lat/Long: N18° 12.29', W063° 03.23'
Elevation: 124 ft

Airport Use: Public
Daylight Savings: Not Observed
UTC Conversion: +4:00 = UTC
Magnetic Variation: 14.0° W

Customs: Yes
Airport Type: IFR
Landing Fee: No
Control Tower: Yes
Jet Start Unit: No
LLWS Alert: No
Beacon: Yes

Sunrise: 1039 Z
Sunset: 2214 Z

Runway Information

Runway: 11
Length x Width: 5459 ft x 98 ft
Surface Type: asphalt
TDZ-Elev: 122 ft
Lighting: Edge
Displaced Threshold: 492 ft

Runway: 29
Length x Width: 5459 ft x 98 ft
Surface Type: asphalt
TDZ-Elev: 81 ft
Lighting: Edge
Displaced Threshold: 492 ft

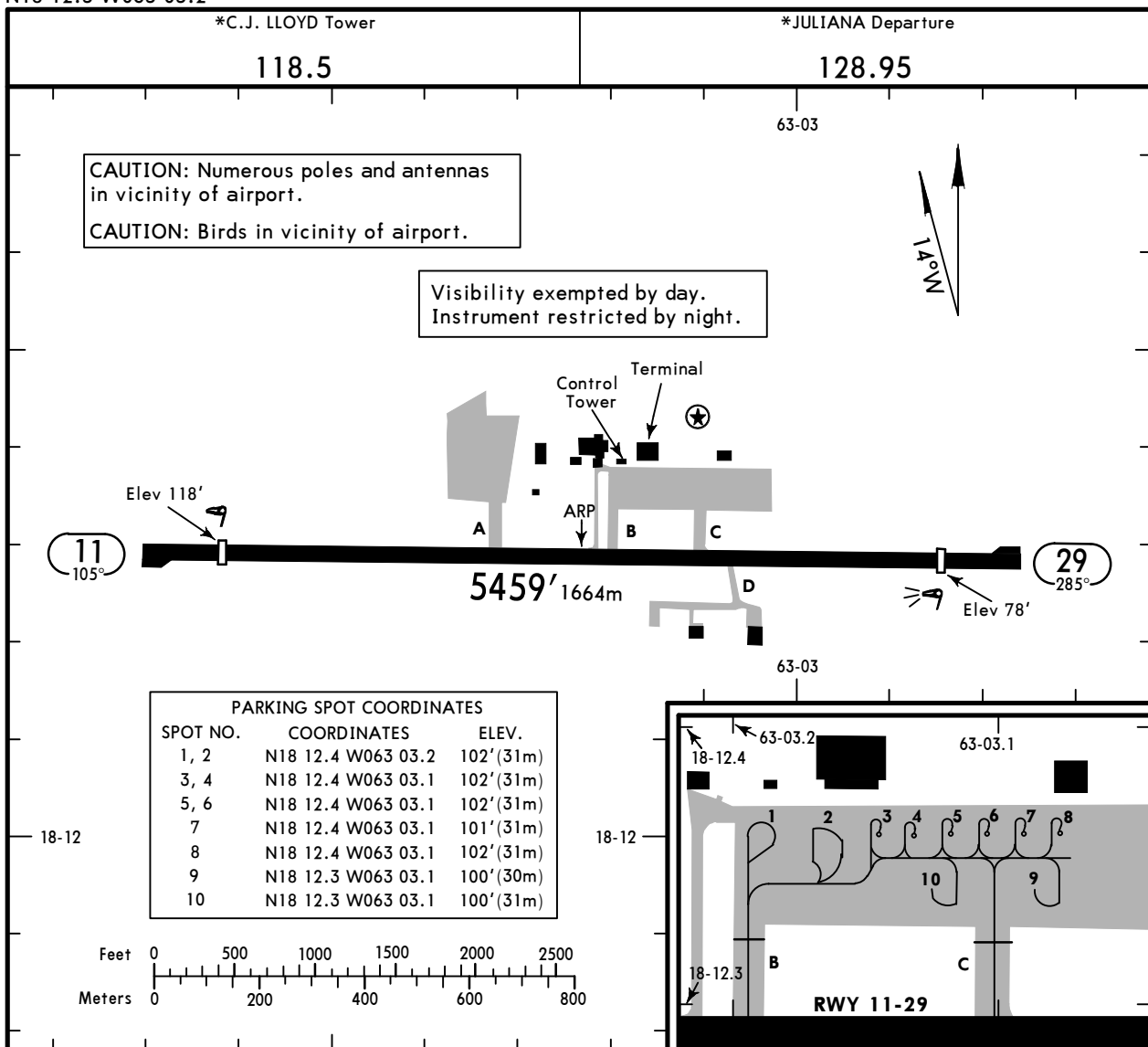
Communication Information

C J Lloyd Tower: 118.500
Juliana Approach: 118.700 Secondary
Juliana Approach: 128.950

TQPF/AXA
 Apt Elev **124'**
 N18 12.3 W063 03.2

JEPPesen
 21 SEP 18 **(10-9)**

THE VALLEY, ANGUILLA
 CLAYTON J LLOYD INTL



ADDITIONAL RUNWAY INFORMATION

RWY	Landing	Surface	USABLE LENGTHS		TAKE-OFF	WIDTH
			Threshold	Glide Slope		
11 29	RL PAPI-L (angle 3.0°)	grooved	4472' 1363m		4964' 1513m	98' 30m

TAKE-OFF

	AIR CARRIER (JAA)		AIR CARRIER (FAR 121)	
	LVP must be in force All Rwys RCLM (DAY only) or RL	All Rwys RCLM (DAY only) or RL	2 Eng	All Rwys Adequate Vis Ref
A				
B	250m	400m	2 Eng	400m
C			3 & 4 Eng	
D	300m			

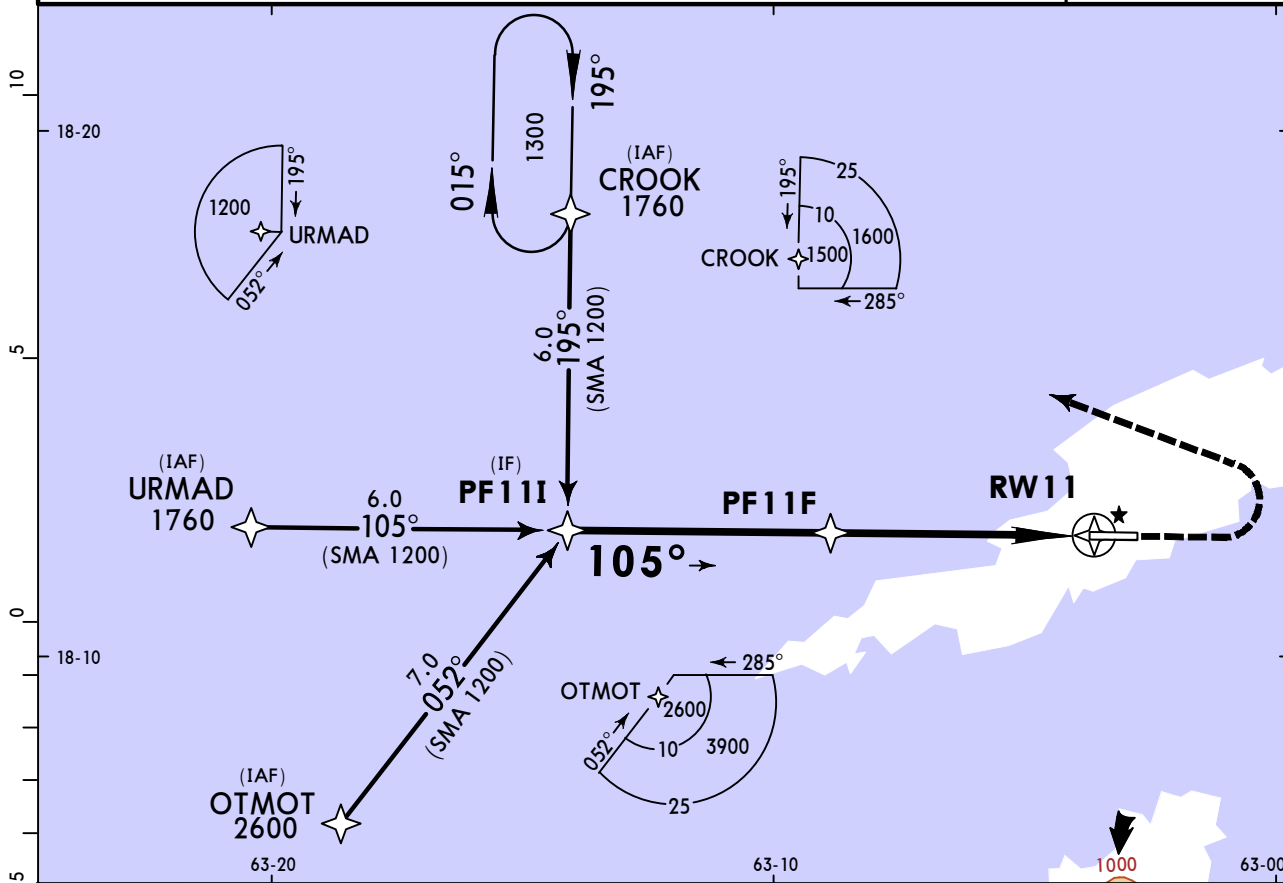
TQPF/AXA

CLAYTON J LLOYD INTL

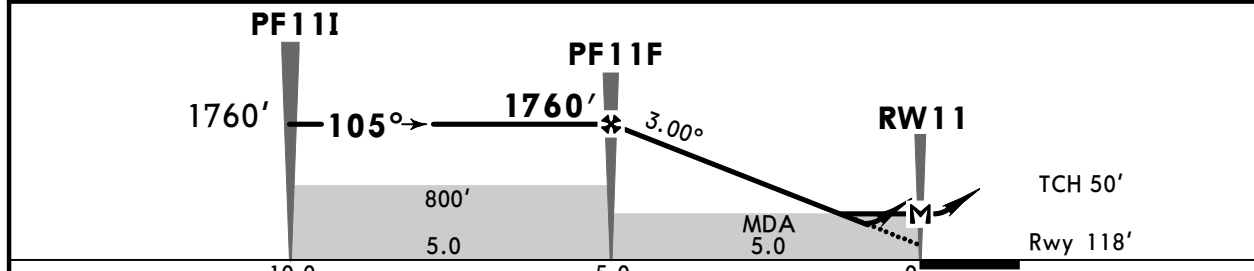
JEPPesen
21 SEP 18 (12-1)

THE VALLEY, ANGUILLA
CAT A, B & C RNP Rwy 11

*JULIANA Approach			*C.J. LLOYD Tower		
128.95			118.5		
RNAV	Final Apch Crs 105°	Procedure Alt PF11F 1760' (1642')	LNAV/VNAV Refer to Minimums	Apt Elev 124'	Rwy 118'
MISSED APCH: Climb straight ahead to 1000', then LEFT turn to CROOK and hold.					TAA 25 NM IAF
Alt Set: hPa Rwy Elev: 4 hPa Trans level: FL065 Trans alt: 5000'					
RNP Apch 1. CAUTION: Visual segment penetrated by trees and terrain. 2. Baro-VNAV not authorized below 32°F (0°C) and above 122°F (50°C).					



DIST TO THR	5.0	4.0	3.0	2.0
ALTITUDE	1760'	1440'	1125'	805'



Gnd speed-Kts	70	90	100	120	140	160	PAPI-L	1000'	LT	CROOK
Descent angle	3.00°	372	478	531	637	743				
LNAV/VNAV: MAP at DA										
LNAV: MAP at RW11										

STRAIGHT-IN LANDING RWY 11				CIRCLE-TO-LAND		
DA(H) LNAV/VNAV		LNAV		Not Authorized North of Aerodrome		
A: 520' (402')		C: 550' (432')		MDA(H) 570' (452')		
B: 530' (412')				Max Kts		
A				100	630' (506') -1600m	
B	1600m		1600m	135	780' (656') -1600m	
C	2000m		2000m	180	880' (756') -3600m	
D	NOT APPLICABLE				D	NOT APPLICABLE

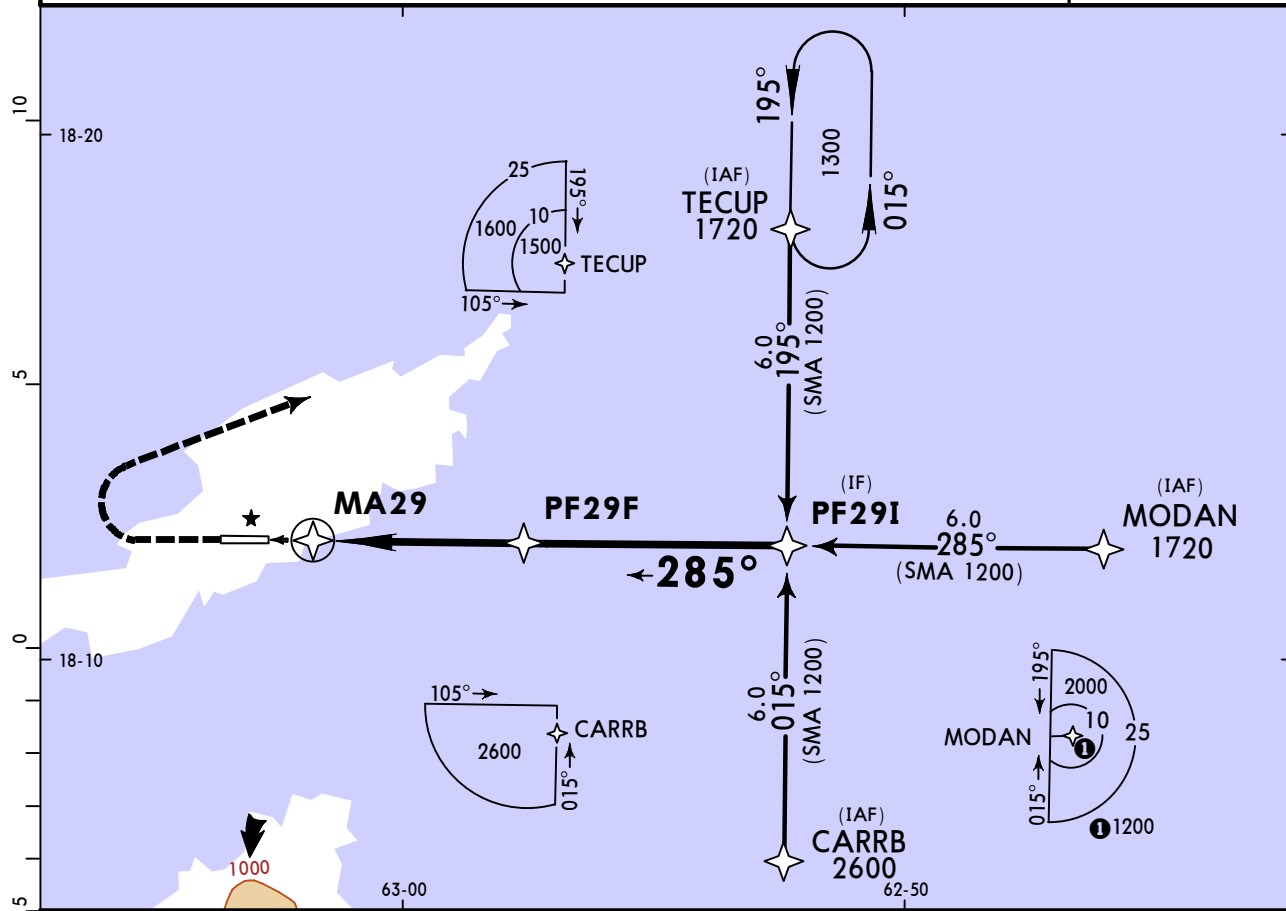
PANS OPS

TQPF/AXA
CLAYTON J LLOYD INTL

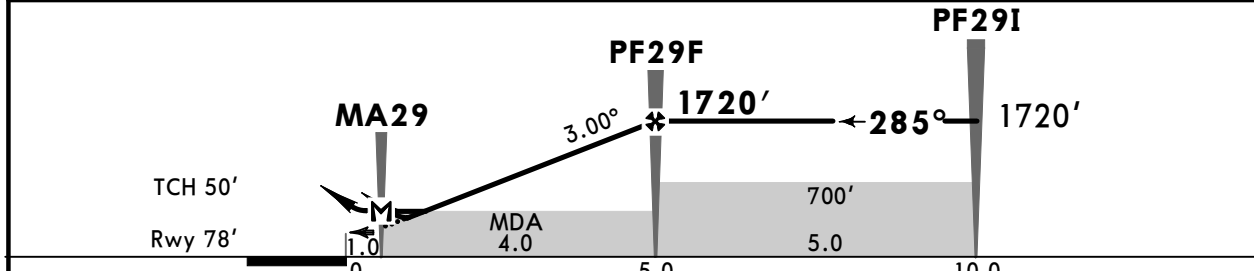
JEPPESEN
21 SEP 18 (12-2)

THE VALLEY, ANGUILLA
CAT A, B & C RNP Rwy 29

*JULIANA Approach			*C.J. LLOYD Tower		
128.95			118.5		
RNAV	Final Apch Crs 285°	Procedure Alt PF29F 1720' (1642')	LNAV/VNAV Refer to Minimums	Apt Elev 124'	TAA 25 NM IAF
MISSED APCH: Climb straight ahead to 1000', then RIGHT turn to TECUP and hold.					
Alt Set: hPa Rwy Elev: 3 hPa Trans level: FL065 Trans alt: 5000'					
RNP Apch 1. CAUTION: Visual segment penetrated by trees and terrain. 2. Baro-VNAV not authorized below 32°F (0°C) and above 122°F (50°C).					



DIST TO THR	2.0	3.0	4.0	5.0
ALTITUDE	765'	1085'	1400'	1720'



Gnd speed-Kts	70	90	100	120	140	160	PAPI-L	1000'	RT	TECUP
Descent angle 3.00°	372	478	531	637	743	849				
LNAV/VNAV: MAP at DA										
LNAV: MAP at MA29										

STRAIGHT-IN LANDING RWY 29				CIRCLE-TO-LAND			
LNAV/VNAV		LNAV		Not Authorized North of Aerodrome			
DA(H) A: 470' (392') B: 480' (402')		C: 500' (422')		MDA(H) 470' (392')			
A	1600m		1600m		Max Kts	MDA(H)	
B					100	630' (506') -1600m	
C	2000m				135	780' (656') -1600m	
D			NOT APPLICABLE		180	880' (756') -3600m	
D			NOT APPLICABLE		D	NOT APPLICABLE	

PANS OPS

Chart changes since cycle 23-2021

ADD = added chart, REV = revised chart, DEL = deleted chart.

ACT	PROCEDURE IDENT	INDEX	REV DATE	EFF DATE
THE VALLEY, (CLAYTON J LLOYD INTL - TQPF)				

TERMINAL CHART CHANGE NOTICES

No Chart Change Notices for Airport TQPF

SUDU..PONPA..PTA..GBE..DIL..VIE..SAVT