

List of pages in this Trip Kit

Trip Kit Index

Airport Information For WAEE

Terminal Charts For WAEE

Revision Letter For Cycle 11-2020

Change Notices

Notebook

General Information

Location: TERNATE IDN
ICAO/IATA: WAEE / TTE
Lat/Long: N00° 49.87', E127° 22.82'
Elevation: 81 ft

Airport Use: Public
Daylight Savings: Not Observed
UTC Conversion: -9:00 = UTC
Magnetic Variation: 0.0° E

Fuel Types: Jet A-1
Customs: Yes
Airport Type: IFR
Landing Fee: No
Control Tower: Yes
Jet Start Unit: No
LLWS Alert: No
Beacon: Yes

Sunrise: 2136 Z
Sunset: 0940 Z

Runway Information

Runway: 14
Length x Width: 7546 ft x 148 ft
Surface Type: asphalt
TDZ-Elev: 81 ft
Lighting: Edge
Stopway: 197 ft

Runway: 32
Length x Width: 7546 ft x 148 ft
Surface Type: asphalt
TDZ-Elev: 61 ft
Lighting: Edge, ALS

Communication Information

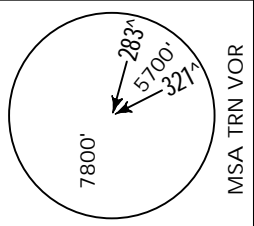
Babullah Tower: 122.400
Babullah Approach: 122.400
Babullah Radio: 905.500

WAEE/TTE
SULTAN BABULLAH

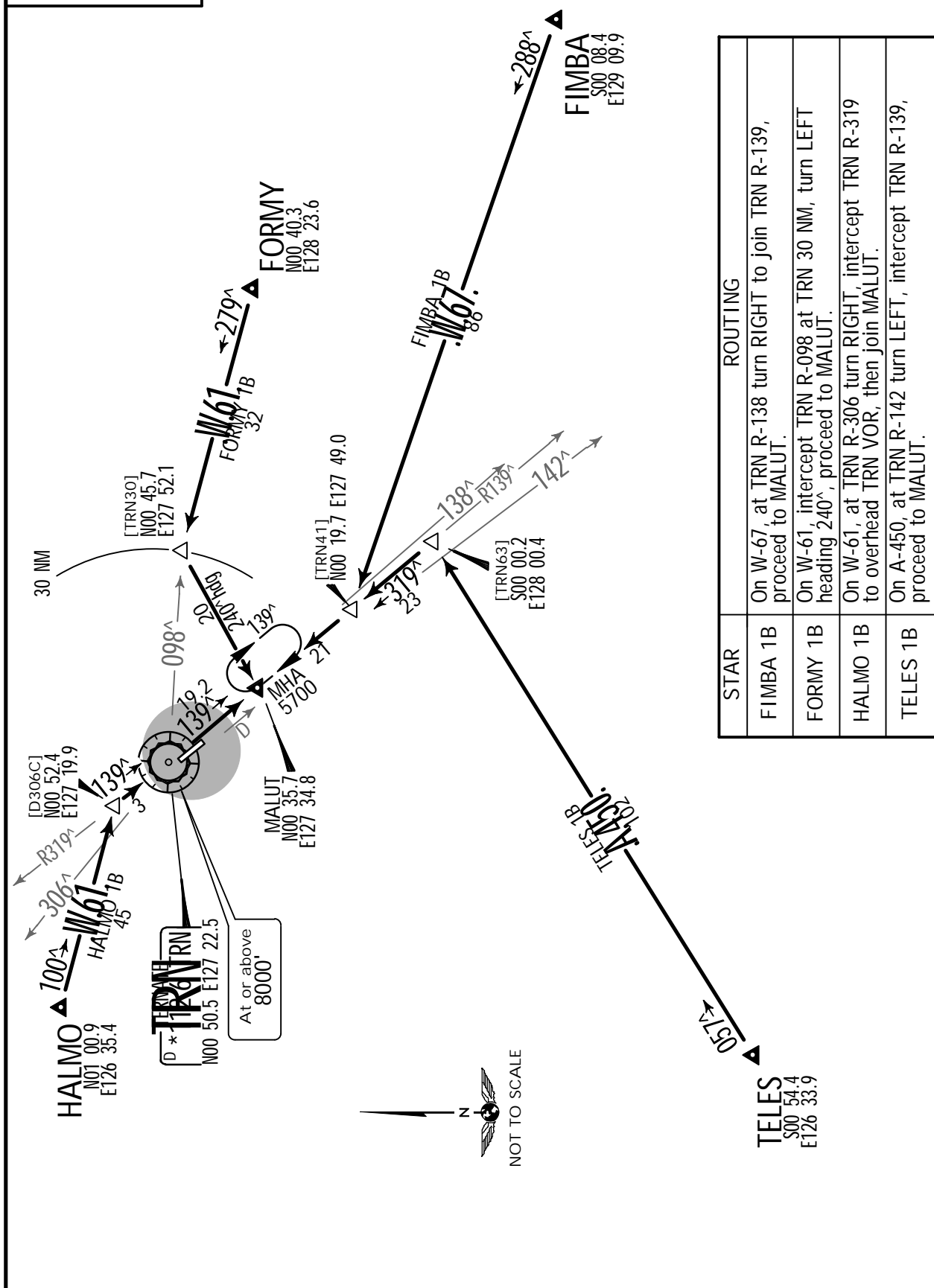
JEPPESEN
4 DEC 15 (10-2) .Eff.10.Dec.

TERNATE, INDONESIA
.STAR.

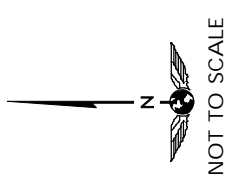
Apt Elev 50' Alt set: hPa (IN on req) Trans level: FL130 Trans alt: 11000'



FIMBA 1B [FIMB1B], FORMY 1B [FORM1B], HALMO 1B [HALM1B], TELES 1B [TELE1B]
ARRIVALS
(RWY 32)



STAR	ROUTING
FIMBA 1B	On W-67, at TRN R-138 turn RIGHT to join TRN R-139, proceed to MALUT.
FORMY 1B	On W-61, intercept TRN R-098 at TRN 30 NM, turn LEFT heading 240°, proceed to MALUT.
HALMO 1B	On W-61, at TRN R-306 turn RIGHT, intercept TRN R-319 to overhead TRN VOR, then join MALUT.
TELES 1B	On A-450, at TRN R-142 turn LEFT, intercept TRN R-139, proceed to MALUT.



WAEW/TTE
SULTAN BABULLAH

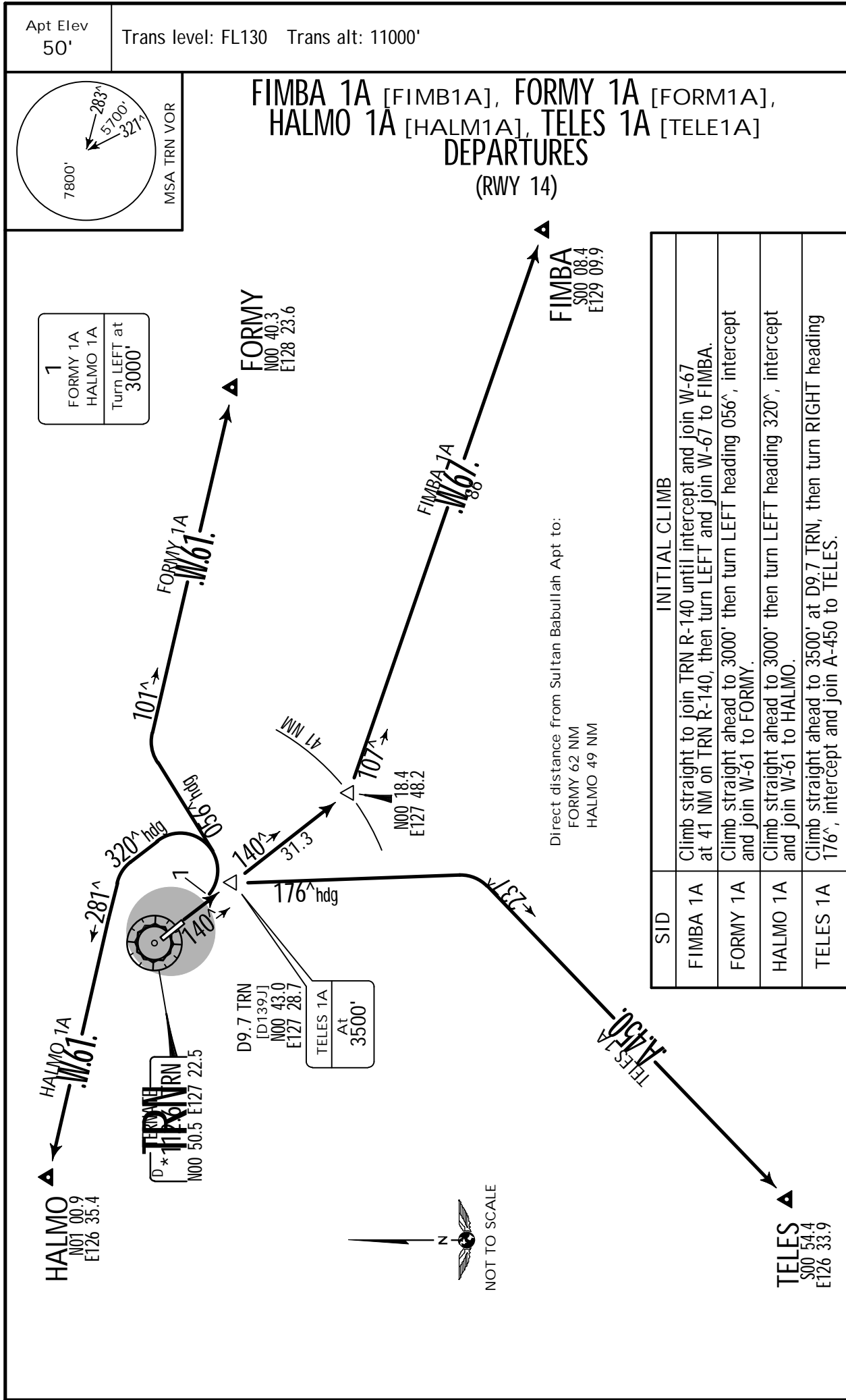


4 DEC 15

10-3

.Eff. 10. Dec.

TERNATE, INDONESIA
.SID.



WAEF/TTE

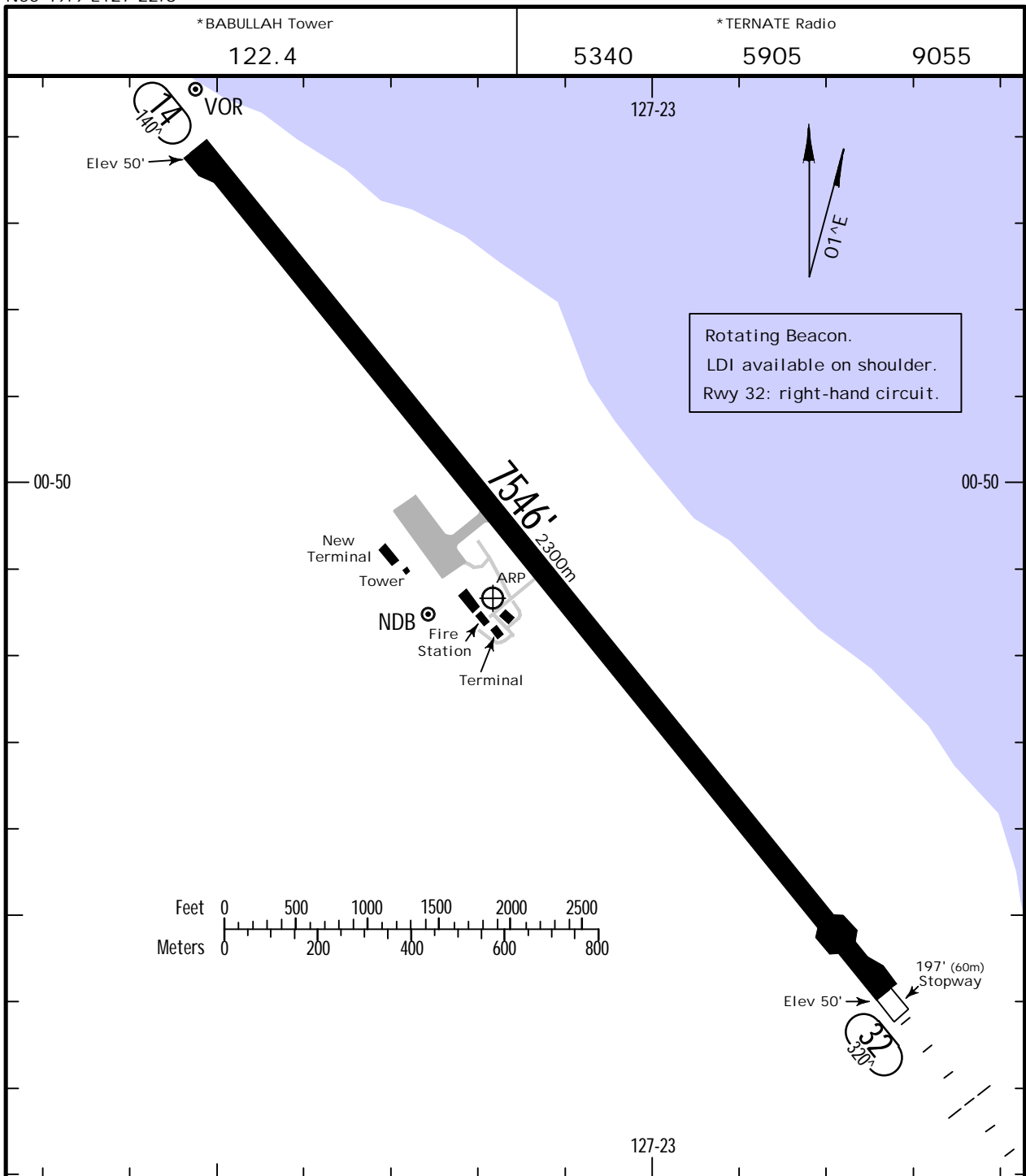
JEPPESEN

TERNATE, INDONESIA

Apt Elev 50'
NOO 49.9 E127 22.8

5 MAY 17 (13-1)

SULTAN BABULLAH



RWY		USABLE LENGTHS		TAKE-OFF	WIDTH
		Threshold	Landing Beyond Glide Slope		
14	RL(60m) PAPI				148'
32	RL(60m) MALS PAPI				45m

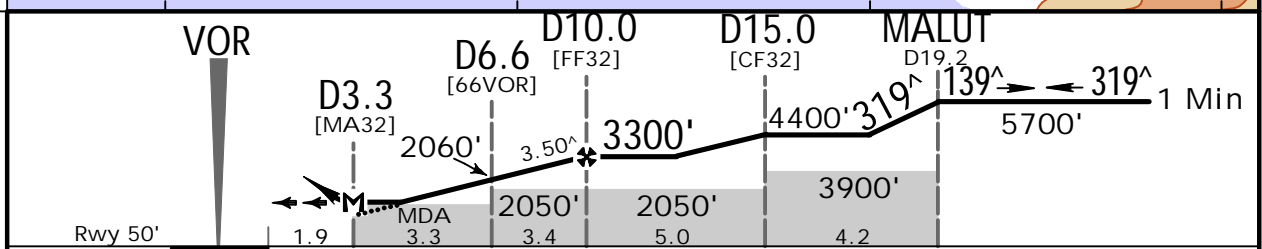
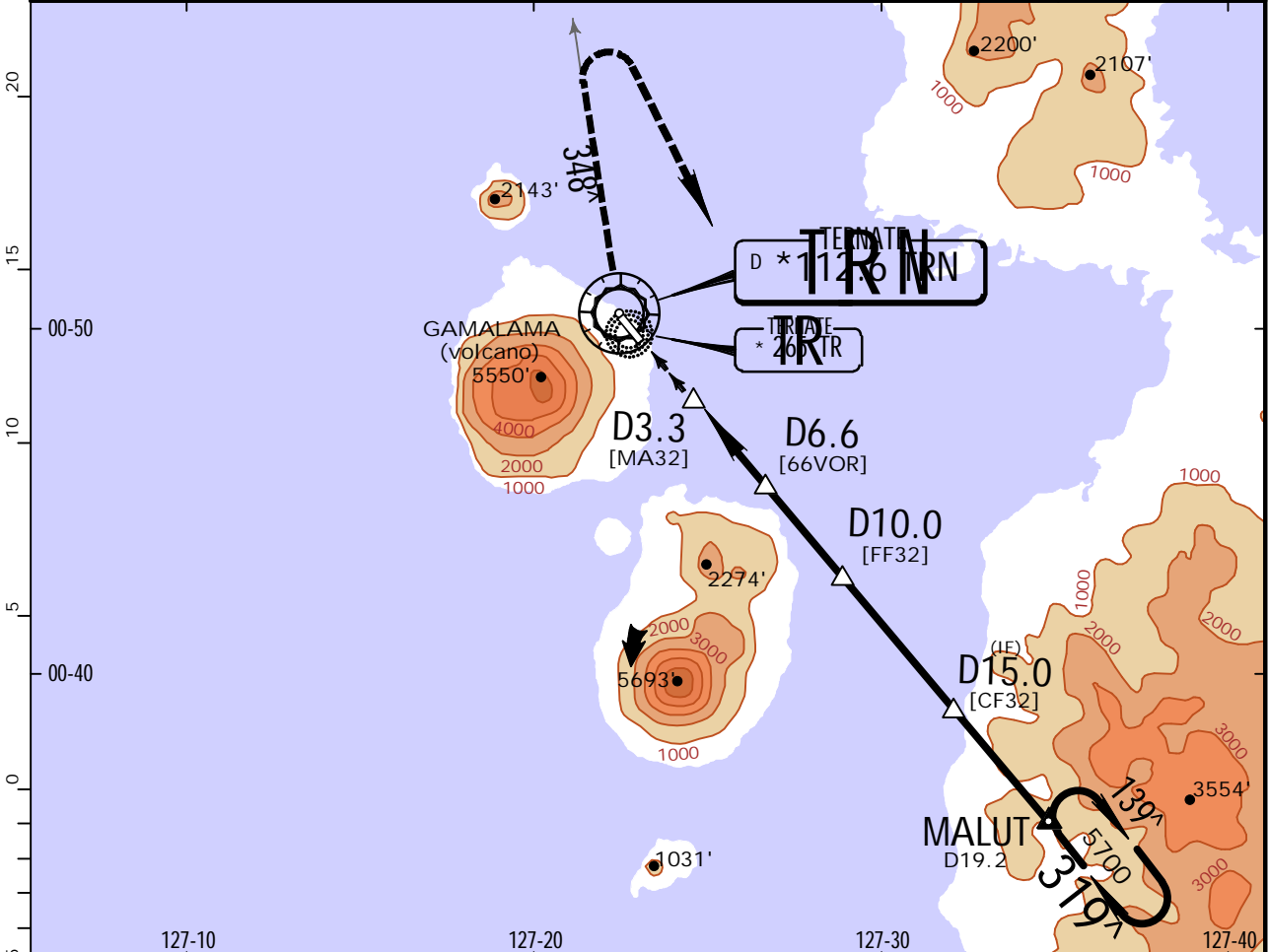
TAKE-OFF			
AIR CARRIER (JAA)		AIR CARRIER (FAR 121)	
LVP must be in Force All Rwys RCLM (Day only)		All Rwys Adequate Vis Ref	
All Rwys RCLM (Day only)			
A		2 Eng	
B	250m		
C		3 & 4 Eng	
D	300m		

WAEE/TTE
SULTAN BABULLAH

JEPPESEN
5 MAY 17 (13-1)

TERNATE, INDONESIA
VOR DME Rwy 32

BRIEFING STRIP™	*TERNATE Radio			*BABULLAH Tower		
	5340	5905	9055	122.4		
	VOR TRN * 112.6	Final Apch Crs 319 [^]	Minimum Alt D10.0 3300' (3250')	MDA(H) 800' (750')	Apt Elev 50' Rwy 50'	
MISSED APCH: Turn RIGHT intercept R-348 TRN VOR and climb to 5700', then turn RIGHT proceed to MALUT or as instructed by ATC.						<p>7800' 283° 321° 1 5700' MSA TRN VOR</p>
Alt Set: MB (IN on req)		Rwy Elev: 2 MB	Trans level: FL 130	Trans alt: 11000'		



Gnd speed-Kts	70	90	100	120	140	160	PAPI MALS	5700' RT	TRN *112.6 R-348	
Descent Angle	3.50 [^]	434	557	619	743	867				991
MAP at D3.3 or D10.0 to MAP	6.7	5:45	4:28	4:01	3:21	2:52				2:31

STRAIGHT-IN LANDING RWY 32		CIRCLE-TO-LAND		<p>No Circling at South West of aerodrome</p>
MDA(H) 800' (750')		MDA(H)		
ALS out		Max Kts		
A		100	800' (750') -3700 m	
B		135		
C	3700 m	180	2500' (2450') -4000 m	
D		205	2500' (2450') -5000 m	

Chart changes since cycle 10-2020

ADD = added chart, REV = revised chart, DEL = deleted chart.

ACT	PROCEDURE IDENT	INDEX	REV DATE	EFF DATE
-----	-----------------	-------	----------	----------

TERNATE, (SULTAN BABULLAH - WAEE)

TERMINAL CHART CHANGE NOTICES

No Chart Change Notices for Airport WAEE

Chart Change Notices for Country IDN

Type: Gen Tmnl

Effectivity: Permanent

Begin Date: Immediately

End Date: No end date

Within JAKARTA and UJUNG PANDANG FIRs, WEST of Longitude 135°E: Trans level: FL 130, Trans alt: 11000'. Within UJUNG PANDANG FIR, EAST of Longitude 135°E Trans level: FL 180, Trans alt: 18000'.

Type: Gen Tmnl

Effectivity: Permanent

Begin Date: Immediately

End Date: No end date

Procedure title VOR DME changed to VOR, note 'DME required' added: WIDN (13-1) (13-2); WIEE (13-1) (13-2); WIGG (13-1) (13-2); WIPB (13-1) (13-2);

Type: Gen Tmnl

Effectivity: Permanent

Begin Date: Immediately

End Date: No end date

Procedure title VOR DME changed to VOR, note 'DME required' added: WABI (13-1); WAEE (13-1); WAEK (13-1) (13-2) (13-3) (13-4); WAGI (13-1) (13-2); WALL (13-1) (13-2); WAMG (13-1); WAQT (13-2) (13-3); WARR (13-1).

SUDU..PONPA..PTA..GBE..DIL..VIE..SAVT